

Registered Angus Sale

T L RANCH

*The Home of Fabulous
Foundation Females*



**Sunday,
September 29, 2019**

**1 pm at the Ranch near
Monticello, MO**

Opportunity Of The Year

T L Ranch Sale

September 29, 2019 1:00

Held at the ranch near Monticello, MO

Spring & Fall Calvers, Spring Heifers

Yearling Heifers, Bred Heifers, Yearling Bulls



Auctioneer:
Col Cody Lowderman
(309)313-2171

SALE DAY PHONES:
(573)470-0846 (Terry)
(573)470-0847 (Marilynn)
(918)510-3464 (Rance)

ASSOCIATION REPRESENTATIVES

Adam Conover, Regional Manager, American Angus Association

LIVESTOCK PUBLICATIONS REPRESENTATIVES

Adam Conover Angus Journal (816)676-8560
Bruce Bradley Special Assignment (417)848-3457
Gary Wall Consultant (406)208-8536
Mike Ellison Consultant (660)216-4705

Buyers unable to attend the sale may send their bids to the Sale Managers, Regional Manager, Field Representatives or Auctioneer.



Sale Managed By
RANCE LONG, INC
918.510.3464 cell
rlong@rancelong.com
www.rancelong.com

Sale Book Prepared By
Simply Angus
816/776-7259

T L RANCH

13815 220th Ave Monticello, MO 63457
Terry - 573/470-0846
Marilynn - 573/470-0847
tlranch49@yahoo.com

We would like to personally invite you to be with us at the ranch on September 29, 2019 for a good time, good fellowship and a great offering of Registered Angus Cattle. For 56 years, we have worked and worked to develop great cattle that can survive on very tough and rugged pastures, with little or no extra feed.

Vaccinations and vitamin and mineral programs are the best. A. I., AHIR, GS Enhanced EPD's, Ultrasound, and Embryo Transfer are all here as tools to enhance your buying decisions. We also offer individual, actual BW, ADJ Weaning Wts and Yearling Wts.

No creep feed is ever used because this could mask poor weaning weights, due to poor milking cows. We wean, grow and develop our young cattle very slow to insure super soundness and longevity.

Our list of A. I. sires over the years has been the breed's greatest sires. I attended A. I. school in 1971, with instructor Warren Gates with ABS. In 1972, I was off and running with A. I. and haven't missed a year since.

Please come and be with us on 9/29/2019. You will like what you see. Lunch at 11:00. - Fish Fry to Follow

Remember AngusGS is used to explain what your calf is capable of genetically.

LODGING: Oak Hill Inn & Suites Canton, MO (573)288-8800

SALE LOCATION: T L Ranch is located 4 miles north of Monticello, MO on RT A, then continue 2 miles on 200th to the ranch, left side.

INSPECTION OF THE CATTLE: The cattle will be available for inspection beginning Friday, September 27, 2019

LOT NUMBERS: The tags on Animals will correspond with the lot numbers in the catalog. Ear tags on calves at the side of dam correspond with the dam's number. TL Ranch will Retain 1/3 Semen Interest In All Bulls Selling

HERD HEALTH: All cattle will be accompanied by a proper health certificate for immediate shipment. All TL Ranch Cattle are free of any known genetic recessives.

TERMS AND CONDITIONS: Cattle will sell under the suggested Terms and Conditions of the American Angus Association (<http://www.angus.or> Pub/suggested sale terms.pdf). EPDs on Females current as of 7/30/19, Bulls as of 8/27/19. All A I certificates, if needed, will be the responsibility the buyer.

BREEDING INFORMATION: A supplemental sheet will be available sale day with complete and up to date calving information. Announcements from the auction block regarding the cattle selling in this sale take precedence over information listed in this sale book.

LIABILITY: All people who attend this sale do so at their own risk, legal or otherwise, for their safety, or the behavior of the animals. The owners, sale management firm or sales staff assume no liability for property loss or damage or any accident that may occur.

FOOD AND REFRESHMENTS: Complimentary Lunch Will Be Available Sale Day.

ANGUSGS
Powered by Neogen GeneSeek

TL RANCH BULLS

TL 4105 **TL SENSATION 4105**
BULL • 19404850 • CALVED: 01/24/2018 • TATTOO:4105
 S A V Registry 2831 Rito 707 of Ideal 3407 7075
S A V SENSATION 5615 S A V Madame Pride 0075
 17633563 SAV Blackcap May 4136 S A V 8180 Traveler 004 #
 S A V May 2397

GW Certified 103C Hoover Dam #
CIRCLE A RITA 5H11 4105 Basin Blackcap 1605
 19404850 Circle A Rita 5H11 8014 # Rito 4S6 of 2536 SA
 Circle A Rita 5H11 5017

CED +9	BW -.1	WW +54	YW +100	M +24	SC +.42	DOC +23	\$B +122												
CED	BW	WW	YW	DMI	YH	SC	DOC	HP	CEM	Milk	MW	MH	CW	Marb	RE	Fat	Tend		
70	49	43	55	28	79	50	5	87	71	96	20	31	33	72	66	76	35		

BW 79 lbs. Adj 205 Day Weight 630 lbs. Adj 365 Day Weight 1301 lbs.
 Dam has a weaning ratio of 2@114. Great female in the TL Ranch program. MO Show Me Qualified.

TL 740 **TL JAMES 740**
BULL • 19236216 • CALVED: 01/18/2018 • TATTOO:740
 Crook Mt Really Windy 141 # A A R Really Windy 1205 #
CROOK MT LINE WINDY 2870 Revolution 155 of Crook Mt
 17261267 Revolution 223 of Crook Mt # Revolution Really Windy 141 #
 Revolution 161 of Crook Mt

Papa Equator 2928 # Papa Power 096 #
TL MADELIA 740 Pap Envious Blackbird 8849 #
 15874621 Madelia T L 114 Rito 2100 G D A R #
 SAF Madelia 0087

CED +10	BW -.5	WW +23	YW +46	M +31	SC +1.52	DOC +17	\$B +63												
CED	BW	WW	YW	DMI	YH	SC	DOC	HP	CEM	Milk	MW	MH	CW	Marb	RE	Fat	Tend		
44	46	97	94	6	5	17	75	38	92	4	63	10	87	91	99	32	44		

BW 74 lbs. Adj 205 Day Weight 630 lbs. Adj 365 Day Weight 1303 lbs.
 Dam has a weaning ratio of 103. She is 11, and one of the great cows we've ever raised, a joy and example of what a super cow should be. MO Show Me Qualified.

TL 288 **TL TEX 288 (twin)**
BULL • 19236890 • CALVED: 09/06/2018 • TATTOO:288
 Basin Payweight 1682 Basin Payweight 0065 #
TEX PLAYBOOK 5437 21AR O Lass 7017
 18414912 Rita 1C43 of 9M26 Complete Summitcrest Complete 1P55 #
 Rita 9M26 of Rita 5F26 Pfred

HF Kodiak 5R Sandy Bar Advantage 43M
TL ELBA 288 Wilbar Ruby 955N
 17421078 Elba TL 202 T L A R Kingpin

CED I+10 BW I+1.2 WW I+60 YW I+101 M I+29 SC I+.84 DOC I+25 \$B 132
 BW 63 lbs. Adj 205 Day Weight 619 lbs. Adj Yearling Weight 1086 lbs.
 Dam from the noted Elba family, she weaned 1217 lbs. on twin bulls, twin sells as 2880. His dam also sells. MO Show Me Qualified.

TL 2880 **TL TEX 2880 (twin)**
BULL • 19236892 • CALVED: 09/06/2018 • TATTOO:2880
 Basin Payweight 1682 Basin Payweight 0065 #
TEX PLAYBOOK 5437 21AR O Lass 7017
 18414912 Rita 1C43 of 9M26 Complete Summitcrest Complete 1P55 #
 Rita 9M26 of Rita 5F26 Pfred

HF Kodiak 5R Sandy Bar Advantage 43M
TL ELBA 288 Wilbar Ruby 955N
 17421078 Elba TL 202 T L A R Kingpin
 Elba T L 930

CED I+10 BW I+1.2 WW I+60 YW I+101 M I+29 SC I+.84 DOC I+25 \$B 132
 BW 62 lbs. 205 Day Weight 598 lbs. Yearling Weight 1081 lbs.
 Dam from the noted Elba family, she weaned 1217 lbs. on twin bulls, twin sells as 288. MO Show Me Qualified.

TL 299 **TL SP ED 299**
BULL • 19236231 • CALVED: 09/06/2018 • TATTOO:299
 Sitz Top Game 561X GDAR Game Day 449 #
DEER VALLEY NASHVILLE 5650 Sitz Pride 88T #
 18485830 JMB Emulota 013 SAV 044 Predominant 4438 #
 Bar S Emulota 5426 #

Leachman Right Time 338-5605 Hyline Right Time 338 #
TL ELBA 299 Leachman Erica 1201
 17421101 Elba TL 202 T L A R Kingpin
 Elba T L 930

CED +6	BW +3.3	WW +74	YW +120	M I+33	SC I+1.18	DOC I+15	\$B +107												
CED	BW	WW	YW	DMI	YH	SC	DOC	HP	CEM	Milk	MW	MH	CW	Marb	RE	Fat	Tend		
80	85	4	7	84	17	34	79	10	41	19	15	12	31	95	22	17	5		

BW 72 lbs. Adj 205 Day Weight 642 lbs. Adj Yearling Weight 1036 lbs.
 Dam from the noted Elba family, has a weaning ratio of 4@110, one of the great Elbas in the program.

TL 37 **TL MARVELOUS 37**
BULL • 19236888 • CALVED: 09/04/2018 • TATTOO:37
 KCF Bennett Southside Nichols Extra K205 #
MEAD MAGNITUDE K C F Miss 208 S11 #
 18543414 Mead Primrose N198 Plattermere Weigh Up K360
 Mead Primrose K247 #

Crook Mt Really Windy 104 Crook Mt Really Windy 141 #
TL LUCY 37 Erica 330 of Crook Mt
 17381328 T L Lucy 905 V D A R National Treasure 1536 #
 TL Lucy 61

CED +11	BW +.6	WW +72	YW +128	M +23	SC +1.05	DOC +32	\$B +126												
CED	BW	WW	YW	DMI	YH	SC	DOC	HP	CEM	Milk	MW	MH	CW	Marb	RE	Fat	Tend		
13	35	16	4	98	2	35	2	32	57	80	55	23	16	66	81	11	10		

BW 74 lbs. Adj 205 Day Weight 717 lbs. Adj Yearling Weight 1131 lbs.
 A calving ease prospect to build a herd of elite females. MO Show Me Qualified.

TL 46 **TL COL SANDERS 46**
BULL • 19236902 • CALVED: 09/01/2018 • TATTOO:46
 Baldrige Xpand X743 Hoover Dam #
BALDRIDGE COLONEL C251 Baldrige Queen S87
 18493773 Baldrige Isabel Y69 Styles Upgrade J59 #
 Baldrige Isabel T935

Cole Creek Blk Cedar 40V Cole Creek Black Cedar 46P #
TL MISS WIX 46 Cole Creek Juanadamere 91N #
 17673887 Miss Wix 974 of McCumber Sitz Rainmaker 6536
 Miss Wix 640 of McCumber #

CED +3	BW +1.5	WW +70	YW +121	M +21	SC +.52	DOC +25	\$B +123												
CED	BW	WW	YW	DMI	YH	SC	DOC	HP	CEM	Milk	MW	MH	CW	Marb	RE	Fat	Tend		
32	34	21	17	52	77	69	3	33	78	73	31	23	28	79	13	53	87		

BW 78 lbs. Adj 205 Day Weight 713 lbs. Adj Yearling Weight 1163 lbs.
 A calving ease prospect to build a herd of elite females.



TL COL SANDERS 46

TL RANCH BULLS

TL **49**

TL MAGNIFICENT 49

BULL • 19236885 • CALVED: 09/01/2018 • TATTOO:49

KCF Bennett Southside Nichols Extra K205 #
 MEAD MAGNITUDE K C F Miss 208 S11 #
 18543414 Mead Primrose N198 Plattermere Weigh Up K360
 Mead Primrose K247 #

Crook Mt Really Windy 104 Crook Mt Really Windy 141 #

T L DIVIDEND GIRL 49

17673884 TL Dividend Girl 65 Erica 330 of Crook Mt
 GDAR SVF Traveler 234D #
 C S C Dividend Girl 926

CED +14	BW -1.5	WW +48	YW +90	M +35	SC +1.57	DOC +30	\$B +94										
CED	BW	WW	YW	DMI	YH	SC	DOC	HP	CEM	Milk	MW	MH	CW	Marb	RE	Fat	Tend
5	15	80	47	92	7	8	26	1	22	2	95	67	69	87	84	19	43

BW 73 lbs. Adj 205 Day Weight 642 lbs. Adj Yearling Weight 1000 lbs.
 His dam has a weaning ratio of 101, she sells in this sale as well. MO Show Me Qualified.

TL **405**

TL COLONEL 405

BULL • 19236901 • CALVED: 09/06/2018 • TATTOO:405

Sitz Top Game 561X GDAR Game Day 449 #
 DEER VALLEY NASHVILLE 5650 Sitz Pride 88T #

18485830 JMB Emulota 013 SAV 044 Predominant 4438 #
 Bar S Emulota 5426 #

Cole Creek Blk Cedar 40V Cole Creek Black Cedar 46P #

TL MADELIA 405

17740957 T L Madelia 740 Cole Creek Juanadamere 91N #
 Papa Equator 2928 #
 Madelia T L 114

CED +9	BW +.5	WW +56	YW +103	M +31	SC +.99	DOC +24	\$B +118										
CED	BW	WW	YW	DMI	YH	SC	DOC	HP	CEM	Milk	MW	MH	CW	Marb	RE	Fat	Tend
18	23	55	34	72	27	30	39	25	47	57	77	42	54	34	16	9	13

BW 76 lbs. Adj 205 Day Weight 635 lbs. Adj Yearling Weight 1094 lbs.
 His dam is a granddaughter of the super Madelia cow, 740, she sells in this sale. MO Show Me Qualified.

TL **4062**

TL KERNAL

BULL • 19236897 • CALVED: 09/02/2018 • TATTOO:4062

Baldrige Xpand X743 Hoover Dam #
 BALDRIDGE COLONEL C251 Baldrige Queen S87

18493773 Baldrige Isabel Y69 Styles Upgrade J59 #
 Baldrige Isabel T935

A A R Ten X 7008 S A Mytty In Focus #

BA BLACKBIRD 4062

17914774 BA Blackbird 8925 A A R Lady Kelton 5551 #
 H A Image Maker 0415 #
 BA RR Blackbird 8185

CED +11	BW -.5	WW +75	YW +126	M +31	SC +1.14	DOC +17	\$B +123										
CED	BW	WW	YW	DMI	YH	SC	DOC	HP	CEM	Milk	MW	MH	CW	Marb	RE	Fat	Tend
2	2	28	42	66	96	37	17	21	39	35	26	66	65	50	64	54	80

BW 75 lbs. Adj 205 Day Weight 695 lbs. Adj Yearling Weight 1109 lbs.
 The Ten dam of this bull has a weaning ratio of 108. MO Show Me Qualified.

TL **4074**

TL MAG 4074

BULL • 19236876 • CALVED: 09/05/2018 • TATTOO:4074

KCF Bennett Southside Nichols Extra K205 #
 MEAD MAGNITUDE K C F Miss 208 S11 #
 18543414 Mead Primrose N198 Plattermere Weigh Up K360
 Mead Primrose K247 #

RR Consensus 1161 Connealy Consensus 7229 #

ERISKAY OF BA 4074

17914777 Eriskay of BA 2116 RR Dixie Erica 3141 #
 H A Image Maker 0415 #
 Eriskay of R R 8495

CED +14	BW -2.2	WW +67	YW +117	M +45	SC +1.14	DOC +32	\$B +145										
CED	BW	WW	YW	DMI	YH	SC	DOC	HP	CEM	Milk	MW	MH	CW	Marb	RE	Fat	Tend
6	13	14	13	81	53	270	20	5	68	1	88	83	51	23	87	89	76

BW 77 lbs. Adj 205 Day Weight 656 lbs. Adj Yearling Weight 1107 lbs.
 His dam has a weaning ratio of 107. MO Show Me Qualified.



MEAD MAGNITUDE

TL **4106**

TL MAGNITUDE 4106

BULL • 19236882 • CALVED: 09/04/2018 • TATTOO:4106

Sitz Top Game 561X GDAR Game Day 449 #
 DEER VALLEY NASHVILLE 5650 Sitz Pride 88T #

18485830 JMB Emulota 013 SAV 044 Predominant 4438 #
 Bar S Emulota 5426 #

RR Consensus 1161

ERISKAY OF BA 4106

17910035 Eriskay of BA 2114 Connealy Consensus 7229 #
 RR Dixie Erica 3141 #
 H A Image Maker 0415 #
 Eriskay of R R 8495

CED +8	BW +0	WW +55	YW +102	M +37	SC +.79	DOC +17	\$B +121										
CED	BW	WW	YW	DMI	YH	SC	DOC	HP	CEM	Milk	MW	MH	CW	Marb	RE	Fat	Tend
30	30	35	12	90	66	66	23	42	66	3	88	64	52	68	40	70	

BW 69 lbs. Adj 205 Day Weight 580 lbs. Adj Yearling Weight 1111 lbs.
 His dam has a weaning ratio of 3@103, she sells in this sale. MO Show Me Qualified.

TL **54**

TL MAGNITUDE 54

BULL • 19236870 • CALVED: 09/04/2018 • TATTOO:54

KCF Bennett Southside Nichols Extra K205 #
 MEAD MAGNITUDE K C F Miss 208 S11 #

18543414 Mead Primrose N198 Plattermere Weigh Up K360
 Mead Primrose K247 #

SAV Final Answer 0035 # Sitz Traveler 8180 #

TL Miss Angus 54

18081050 T L Miss Angus 39 S A V Emulota 8145 #
 Cole Creek Blk Cedar 40V
 T L Miss Angus 103

CED +12	BW +.5	WW +73	YW +127	M +29	SC +1.44	DOC +32	\$B +136										
CED	BW	WW	YW	DMI	YH	SC	DOC	HP	CEM	Milk	MW	MH	CW	Marb	RE	Fat	Tend
18	57	26	15	64	7	15	47	1	2	17	61	29	44	58	22	11	19

BW 74 lbs. Adj 205 Day Weight 690 lbs. Adj Yearling Weight 1168 lbs.
 His dam sells as Lot 54 in this sale. MO Show Me Qualified.



TL MAGNITUDE 54

TL RANCH BULLS

TL 59

TL COLONEL 59

BULL • 19236889 • CALVED: 09/04/2018 • TATTOO:59

Baldrige Xpand X743 Hoover Dam #
BALDRIDGE COLONEL C251 Baldrige Queen S87
 18493773 Baldrige Isabel Y69 Styles Upgrade J59 #
 Baldrige Isabel T935

Connealy Final Product# Connealy Product 568

TL MISS WIX 59 Ebonesta of Conanga 471
 17914774 T L Miss Wix 993 Woodhill Foresight #
 Miss Wix 6151 of McCumber

CED +3	BW +2.3	WW +74	YW +127	M +28	SC +.51	DOC +9	\$B +143										
CED	BW	WW	YW	DMI	YH	SC	DOC	HP	CEM	Milk	MW	MH	CW	Marb	RE	Fat	Tend
93	98	8	14	59	12	76	55	22	26	316	2	1	4	38	60	60	1

BW 76 lbs. Adj 205 Day Weight 704 lbs. Adj Yearling Wt 1086 lbs.
 His dam has a weaning ratio of 3@100.

TL 503

TL ACCLIMATED 503

BULL • 19236207 • CALVED: 09/05/2018 • TATTOO:503

Jindra 3rd Dimension Jindra Double Vision
JINDRA ACCLAIM Jindras Sapphire J417
 17972810 Jindra Blackbird Lassy 111 Connealy Impression
 Jindras Enchantress J102

SAV Final Answer 0035 # Sitz Traveler 8180 #

TL ELBA 503 S A V Emulous 8145 #
 18081044 T L Elba 299 Leachman Right Time 338-5605
 Elba TL 202

CED +3	BW +3.6	WW +92	YW +163	M +30	SC -.25	DOC +17	\$B +173										
CED	BW	WW	YW	DMI	YH	SC	DOC	HP	CEM	Milk	MW	MH	CW	Marb	RE	Fat	Tend
66	85	1	1	63	1	87	32	11	60	72	12	5	2	55	18	1	5

BW 76 lbs. Adj 205 Day Weight 722 lbs. Adj Yearling Wt 1279 lbs.
 His dam has a weaning ratio of 3@112, this young prospect has been a favorite since birth.



TL ACCLIMATED 503

TL 508

TL LYNCHBURG 508

BULL • 19236219 • CALVED: 09/04/2018 • TATTOO:508

Sitz Top Game 561X GDAR Game Day 449 #
DEER VALLEY NASHVILLE 5650 Sitz Pride 88T #
 18485830 JMB Emulota 013 SAV 044 Predominant 4438 #
 Bar S Emulota 5426 #

Connealy Final Product# Connealy Product 568

TL MADELIA 508 Ebonesta of Conanga 471
 17914774 Madelia T L 326 Papa Hero EQ 6034
 Madelia T L 114

CED +4	BW +1.6	WW +59	YW +108	M +25	SC +1.56	DOC +22	\$B +102										
CED	BW	WW	YW	DMI	YH	SC	DOC	HP	CEM	Milk	MW	MH	CW	Marb	RE	Fat	Tend
85	86	13	14	69	7	39	18	86	29	51	11	16	91	6	2	5	

BW 75 lbs. Adj 205 Day Weight 610 lbs. Adj Yearling Wt 10037 lbs.
 From a super Final Product daughter and the Madelia family, she sells in this sale.

TL 64

TL COLONEL 64

BULL • 19236880 • CALVED: 09/05/2018 • TATTOO:64

Baldrige Xpand X743 Hoover Dam #
BALDRIDGE COLONEL C251 Baldrige Queen S87
 18493773 Baldrige Isabel Y69 Styles Upgrade J59 #
 Baldrige Isabel T935

Plattemere Weigh Up K360 Sitz Upward 307 R #

TL RITO BLACKCAP 64 Barbara of Plattemere 337 #
 16692552 T L Rito Blackcap 285 H F Kodiak 5R
 Rito Blackcap 9038 TL 111

CED +4	BW +1.8	WW +69	YW +116	M +27	SC +1.26	DOC +24	\$B +161										
CED	BW	WW	YW	DMI	YH	SC	DOC	HP	CEM	Milk	MW	MH	CW	Marb	RE	Fat	Tend
42	42	16	35	27	11	9	2	55	47	60	41	6	12	37	13	5	82

BW 64 lbs. Adj 205 Day Weight 683 lbs. Adj Yearling Wt 1088 lbs.
 His dam has a weaning ratio of 108 on her progeny.

TL 65

TL LOUISVILLE 65

BULL • 19236232 • CALVED: 09/24/2018 • TATTOO:65

Sitz Top Game 561X GDAR Game Day 449 #
DEER VALLEY NASHVILLE 5650 Sitz Pride 88T #
 18485830 JMB Emulota 013 SAV 044 Predominant 4438 #
 Bar S Emulota 5426 #

RB Tour of Duty 1777

TL ELBA 65 Warner War Party 2417 #
 17914774 T L Elba 289 B A Lady 6807 305
 Leachman Right Time 338-5605
 Elba TL 202

CED +3	BW +2.8	WW +68	YW +124	M +32	SC +1.02	DOC +4	\$B +127										
CED	BW	WW	YW	DMI	YH	SC	DOC	HP	CEM	Milk	MW	MH	CW	Marb	RE	Fat	Tend
88	77	30	26	76	35	38	83	25	88	9	16	11	33	92	12	1	55

BW 71 lbs. Adj 205 Day Weight 649 lbs. Adj Yearling Wt 1110 lbs.
 His dam has a weaning ratio of 2@100.

TL 605

TL BUNKER HILL 605

BULL • 19456681 • CALVED: 09/02/2018 • TATTOO:605

Baldrige Xpand X743 Hoover Dam #
BALDRIDGE COLONEL C251 Baldrige Queen S87
 18493773 Baldrige Isabel Y69 Styles Upgrade J59 #
 Baldrige Isabel T935

T L Kodiak 964

TL ELBA 605 HF Kodiak 5R
 18316653 T L Elba 288 H A 4167 Lady 1013
 HF Kodiak 5R
 Elba TL 202

CED +6	BW +1.4	WW +77	YW +134	M +14	SC +1.25	DOC +20	\$B +155										
CED	BW	WW	YW	DMI	YH	SC	DOC	HP	CEM	Milk	MW	MH	CW	Marb	RE	Fat	Tend
39	42	42	44	27	44	29	52	44	54	97	4	1	24	59	50	11	765

BW 72 lbs. Adj 205 Day Weight 673 lbs. Adj Yearling Wt 1187 lbs.
 His dam has a weaning ratio of 106, one of the really great young powerhouse bulls in this sale.

TL 638

TL MAGNITUDE 638

BULL • 19236230 • CALVED: 08/18/2018 • TATTOO:638

KCF Bennett Southside Nichols Extra K205 #
MEAD MAGNITUDE K C F Miss 208 S11 #
 18543414 Mead Primrose N198 Plattemere Weigh Up K360
 Mead Primrose K247 #

Sitz Thunder 0199

MEAD ROSEANNE Q237 Connealy Thunder #
 18542414 Mead Roseanne L469 Sitz Elsiemere 1779
 S A V Final Answer 0035 #
 V N A R Roseanne 510A #

CED +12	BW -1.4	WW +72	YW +133	M +26	SC +.89	DOC +38	\$B +134										
CED	BW	WW	YW	DMI	YH	SC	DOC	HP	CEM	Milk	MW	MH	CW	Marb	RE	Fat	Tend
12	33	3	4	89	70	34	1	3	56	72	62	15	82	82	26	5	

BW 71 lbs. Adj 205 Day Weight 642 lbs. Adj Yearling Wt 1087 lbs.
 His dam has a weaning ratio of 101. 19.7 for heifer pregnancy is the top 1%, top 1% for Docility and top 5% for Tenderness. MO Show Me Qualified.

TL RANCH BULLS

TL 72

TL ACCLAIM 72

BULL • 19236217 • CALVED: 09/03/2018 • TATTOO:72

JINDRA ACCLAIM
17972810 Jindra Blackbird Lassy 111
Connealy Impression
Jindras Enchantress J102

Connealy Thunder #
TL MISS ANGUS 72
18636705 T L Miss Angus 54
Baldrige Kaboom K243 KCF #
Parka of Conanga 241 #
S A V Final Answer 0035 #
T L Miss Angus 39

CED	+10	BW	+1.2	WW	+66	YW	+125	M	+25	SC	+15	DOC	+15	\$B	+163		
CED	BW	WW	YW	DMI	YH	SC	DOC	HP	CEM	Milk	MW	MH	CW	Marb	RE	Fat	Tend
15	38	46	4	16	12	81	39	11	9	59	75	57	24	72	34	3	6

BW 72 lbs. Adj 205 Day Weight 667 lbs. Adj Yearling Wt 1150 lbs.
A great heifer bull prospect from a long line of super producers at TL Ranch.
MO Show Me Qualified.

TL 702

TL THUNDER 702

BULL • 19236220 • CALVED: 09/11/2018 • TATTOO:702

TL THUNDER 4106
18636717 Eriskay of BA 4106
Connealy Thunder #
Baldrige Kaboom K243 KCF #
Parka of Conanga 241 #
RR Consensus 1161
Eriskay of BA 2114

A A R Ten X 7008 S A #
TL ELBA 702
18636741 TL Elba 57
Mytty In Focus #
A A R Lady Kelton 5551 #
S A V Final Answer 0035 #
T L Elba 291

CED	+10	BW	+1.5	WW	+65	YW	+119	M	+32	SC	+2.09	DOC	+25	\$B	+158		
CED	BW	WW	YW	DMI	YH	SC	DOC	HP	CEM	Milk	MW	MH	CW	Marb	RE	Fat	Tend
7	10	24	33	81	54	2	17	22	24	8	8	11	9	95	28	11	2

BW 78 lbs. Adj 205 Day Weight 642 lbs. Adj Yearling Wt 1183 lbs.
His dam has a weaning ratio of 109 on her progeny reported. MO Show Me Qualified.

TL 75

TL COLONEL 75

BULL • 19236866 • CALVED: 09/02/2018 • TATTOO:75

BALDRIDGE COLONEL C251
18493773 Baldrige Isabel Y69
Baldrige Xpand X743
Hoover Dam #
Baldrige Queen S87
Styles Upgrade J59 #
Baldrige Isabel T935

Connealy Impression #
TL ELBA 75
18316653 T L Elba 299
Connealy Reflection #
Pearl Pammy of Conanga 194
Leachman Right Time 338-5605
Elba TL 202

CED	+4	BW	+2.5	WW	+66	YW	+118	M	+23	SC	+1.49	DOC	+20	\$B	+142		
CED	BW	WW	YW	DMI	YH	SC	DOC	HP	CEM	Milk	MW	MH	CW	Marb	RE	Fat	Tend
85	88	14	18	48	60	6	75	46	8	48	25	16	21	16	55	49	21

BW 78 lbs. Adj 205 Day Weight 635 lbs. Adj Yearling Wt 1081 lbs.
His dam has a weaning ratio of 100.



TL COLONEL 75

TL 720

TL ACCLAIM 720

BULL • 19236223 • CALVED: 09/01/2018 • TATTOO:720

JINDRA ACCLAIM
17972810 Jindra Blackbird Lassy 111
Connealy Impression
Jindras Enchantress J102

HA Windy 2326
CIRCLE A RITA 5H11 6531
18720222 Circle A Rita 5H11 4171
Apex Windy 078 #
H A Blackcap Lady 1055 #
S A V Angus Valley 1676 #
Circle A Rita 5H11 2236

CED +13 BW -1.3 WW +68 YW +125 M +30
BW 62 lbs. Adj 205 Day Weight 666 lbs. Adj Yearling Wt 1180 lbs.
His dam has a weaning ratio of 105, a great heifer bull here. MO Show Me Qualified.

TL 721

TL THUNDER 721

BULL • 19236224 • CALVED: 09/07/2018 • TATTOO:721

TL THUNDER 4106
18636717 Eriskay of BA 4106
Connealy Thunder #
Baldrige Kaboom K243 KCF #
Parka of Conanga 241 #
RR Consensus 1161
Eriskay of BA 2114

Connealy Impression #
CIRCLE A RITA 5H11 6429
18720131 Circle A Rita 5H11 4521
Connealy Reflection #
Pearl Pammy of Conanga 194
W R A Walker X3
Circle A Rita 5H11 1260

CED	+11	BW	+6	WW	+62	YW	+114	M	+30	SC	+1.32	DOC	+28	\$B	+120		
CED	BW	WW	YW	DMI	YH	SC	DOC	HP	CEM	Milk	MW	MH	CW	Marb	RE	Fat	Tend
17	24	42	28	39	36	42	76	64	5	34	65	44	29	755	48	12	14

BW 72 lbs. Adj 205 Day Weight 676 lbs. Adj Yearling Wt 1087 lbs.
His dam has a weaning ratio of 107 on her progeny reported. MO Show Me Qualified.

TL 724

TL ACCLAIM 724

BULL • 19236227 • CALVED: 09/03/2018 • TATTOO:724

JINDRA ACCLAIM
17972810 Jindra Blackbird Lassy 111
Connealy Impression
Jindras Enchantress J102

S A V Bruiser 9164
CIRCLE A ROYAL QUEEN 6380
18720084 Circle A Royal Queen 0546
S A V Bismarck 5682 #
S A V Miss Bobbie 7463
S A V Empire 8235
Sydgen Royal Queen 6708

CED	+2	BW	+2.3	WW	+72	YW	+128	M	+25	SC	-.49	DOC	+9	\$B	+173		
CED	BW	WW	YW	DMI	YH	SC	DOC	HP	CEM	Milk	MW	MH	CW	Marb	RE	Fat	Tend
66	72	5	3	12	29	71	52	52	24	69	23	53	4	72	52	4	35

BW 76 lbs. Adj 205 Day Weight 567 lbs. Adj Yearling Wt 1060 lbs.
From a great Bruiser daughter with a terrific udder.



JINDRA ACCLAIM

FALL CALVING COWS

T L 285 **T L RITO BLACKCAP 285**

COW • 17421073 • CALVED: 01/30/2012 • TATTOO:285
 Sandy Bar Advantage 43M TC Advantage #
HF KODIAK 5R Sandy Bar Jemina 44K
 16526315 Wilbar Ruby 955N Vermilion Yellowstone #
 Wilbar Ruby 161J

Sitz Alliance 6595 # Sitz Traveler 8180 #
Rito Blackcap 9038 TL 111 Sitz Barbaramere Jet 2698 #
 14019308 HA Rito Blackcap 9038 H 96 Rito 2100 7371
 H 96 Blackcap 3835

CED +9 BW +3 WW +45 YW +73 M +15 SC I+.86 DOC +I+17 \$B +98

A great Kodiak daughter, her maternal grandam is the dam of the breed icon, Image Maker. This proven female has a calving interval of 5@353. Pasture after 11/25/2018 to DEER VALLEY NASHVILLE 5650.



RITO BLACKCAP 9038 TL 111

T L 288 **T L ELBA 288**

COW • 17421078 • CALVED: 02/04/2012 • TATTOO:288
 Sandy Bar Advantage 43M TC Advantage #
HF KODIAK 5R Sandy Bar Jemina 44K
 16526315 Wilbar Ruby 955N Vermilion Yellowstone #
 Wilbar Ruby 161J

T L A R Kingpin Papa Hero EQ 6048
ELBA TL 202 Madelia T L 114
 14289015 Elba T L 930 R R Scotchcap 9440 #
 Elba T L 60

CED +7 BW +1.6 WW +55 YW +90 M +24 SC I+.62 DOC I+18 \$B +121

Another great Kodiak, this cow weaned twin bull calves for a combined weight of 1217 lbs., no creep feed. A fantastic producer. Her dam is one of the greatest females ever at T L Ranch. Calving interval 5@363. Bull Calf at side (Lot 288A) born 8/24/19 by CONNEALY SPUR. BW 79 lbs.



ELBA TL 202

T L 375 **BIRKS FOREVER LADY 375**

COW • 18562135 • CALVED: 11/14/2015 • TATTOO:375
 Dameron First Class EXG RS First Rate S903 R3
EXAR BLUE CHIP 1877B Dameron Northern Miss 3114
 16980412 Greens Princess 1012 Greens Premium 7578
 Greens Princess 7418

SAV Bismarck 5682 # G A R Grid Maker #
BIRKS FOREVER LADY 310 SAV Abigale 0451
 17034056 Birks Forever Lady 360 Sitz Traveler 8180 #
 Birks Forever Lady 27

CED +2 BW +4.0 WW +63 YW +102 M +23 SC I+.69 DOC I+12 \$B +119

Sired by the popular Blue Chip from a Bismarck dam, a great Forever Lady female for any program. Pasture Exposed after 11/28/2018 to DEER VALLEY NASHVILLE 5650.

T L 49 **T C DIVIDEND GIRL 49**

COW • 17673884 • CALVED: 10/10/2013 • TATTOO:49
 Crook Mt Really Windy 141 # A A R Really Windy 1205 #
CROOK MT REALLY WINDY 104 Revolution 155 of Crook Mt
 14865238 Erica 330 of Crook MT Hero 6267 of R R 2418 #
 Eerica 269 of Crook MT

GDAR SVF Traveler 234D # Traveler 124 G D A R #
TL DIVIDEND GIRL 65 GDAR Forever Lady 718
 15297059 CSC Dividend Girl 926 TC Dividend 963 #
 C S C Pay Girl E100

CED +10 BW +1.5 WW +39 YW +68 M +33 SC +1.76 DOC +21 \$B +70

Super producer. Weaning Ratio 4@101, calving interval 4@359. A daughter sells as 701. Pasture exposed after 11/28/2018 to DEER VALLEY NASHVILLE 5650.

T L 405 **T L MADELIA 405**

COW • 17740957 • CALVED: 01/28/2014 • TATTOO:405
 Cole Creek Black Cedar 46P C H Quantum 6247
COLE CREEK BLK CEDAR 40V Cole Creek Clova Juanada 67
 16134349 Cole Creek Juanadamere 91N # Cole Creek 104 Juanada
 0157 Cole Creek Juanadamere 238

Papa Equator 2928 # Papa Power 096 #
T L MADELIA 740 Papa Envious Blackbird 8849 #
 15874621 Madelia T L 114 Rito 2100 G D A R #
 SAF Madelia 0087

CED +0 BW +3.1 WW +49 YW +80 M +18 SC +.79 DOC +12 \$B +91

An own daughter of the great Madelia 740, maternal icon at TL Ranch. Calving Interval is 3@363. Bred to CONNEALY SPUR, Pasture after 11/28/2018 to DEER VALLEY NASHVILLE 5650.



FALL CALVING COWS

T L 4077 **DIXIE ERICA OF BA 4077**
COW • 17910029 • CALVED: 02/25/2014 • TATTOO:4077
 Sitz Onward 454S Connealy Onward #
HARRISON ONWARD 9089 Sitz Elsiemere 22P
 16370678 HLL Essa 009S Brooks EXT 792 #
 HLL Essa 022P

GDAR Game Day 6233 GDAR Game Day 449 #
DIXIE ERICA of BA 8914 GDAR Queen Cary 968 #
 17034056 Dixie Erica of BA 6902 Wards Freightliner 116
 Dixie Erica of BA 4949

CED +3 BW +1.6 WW +48 YW +81 M +30 SC I+.74 DOC I+8 \$B +92
 Super producer. Weaning Ratio 2@104. Daughter sells as 727. Heifer Calf at side (Lot 4077A) born 8/24/19 by S S NIAGARA Z29 BW 79 lbs.

T L 4106 **ERISKAY OF BA 4106**
COW • 17910035 • CALVED: 03/19/2014 • TATTOO:4106
 Connealy Consensus 7229 # Connealy Consensus #
RR CONSENSUS 1161 Blue Lilly of Conanga 16
 16921447 RR Dixie Erica 3141 TC Moonshine 001 #
 RR Dixie Erica 0634

H A Image Maker 0415 # Hero 6267 of R R 2418 #
ERISKAY OF BA 2114 H A Rito Blackcap 9038
 17401548 Eriskay of R R 8495 R R 9440 Scotch Cap 1483 #
 Eriskay of R R 3471

CED +10 BW -.6 WW +38 YW +70 M +135 SC +.74 DOC + 22 \$B +105
 A powerful Consensus bred granddaughter of the icon, Image Maker. Calving interval 3@359, WR 103. Son sells in this sale. Bull calf at side (Lot 4106A) born 8/23/19 by DEER VALLEY GROWTH FUND. BW 72 lbs.

T L 501 **RALLY MISS WIX 501**
COW • 18173564 • CALVED: 01/04/2015 • TATTOO:501
 SAV Final Answer 0035 # Sitz Traveler 8180 #
CONNELLY CAPITALIST 028 SAV Emulous 8145
 16752262 Prides Pita of Conanga 8821 CRA Bextor 872 5205 708 #
 Prides Trav of Conanga 6499

Rally New Frontier 5233 B/R New frontier 095 #
RALLY MISS WIX 6009 Rally Tibbie 5380 #
 15389000 Rally Miss Wix 413 Rally Dateline 5190
 Rally Miss Wix 922

CED +8 BW +1.3 WW +52 YW +94 M +22 SC I+.73 DOC I+16 \$B +109
 By the popular Capitalist from the Miss Wix family, she has a calving interval of 2@346. Pasture Exposed after 11/28/2018 to DEER VALLEY NASHVILLE 5650.

T L 508 **T L MADELIA 508**
COW • 18079669 • CALVED: 09/22/2014 • TATTOO:508
 Connealy Product 568 G A R Retail Product #
CONNELLY FINAL PRODUCT Pride Fine of Conanga 566
 15848422 Ebonista of Conanga 471 # Connealy Deep Canyon 454 #
 Ebonisa of Conanga 5469

Papa Hero EQ 6034 Papa Equator 2928 #
MADELIA T L 326 Papa Blkcp McHenry PLD 2977
 14599399 # Madelia T L 114 Rito 2100 G D A R #
 SAF Madelia 0087

CED +5 BW +.4 WW +40 YW +75 M +22 SC I+.78 DOC I+15 \$B +109
 From the foundation Madelia family line at T L Ranch, an excellent daughter of Final Product. Pasture exposed after 11/28/2018 to DEER VALLEY NASHVILLE 5650.

T L 63 **T L ELBA 63**
COW • 18324598 • CALVED: 09/07/2015 • TATTOO:63
 Werner War Party 2417 Connealy Onward #
RB TOUR OF DUTY 177 BAAR USA Lady Jaye 489
 16984170 B A Lady 6807 308 Vermilion Dateline #
 BD Lady Hi Flyer 302

Leachman Right Time 338 5605 Hyline Right Time 338 #
T L ELBA 293 Leachman Erica 1201
 16605019 Elba T L 202 T L A R Kingpin
 Elba T L 930

CED +3 BW +3.0 WW +63 YW +110 M +25 SC I+.34 DOC I+23 \$B+ 139
 Another great Elba female from the high performance sire, Tour of Duty. Calving Interval 2@351. Heifer calf at side (Lot 63A) born 8/25/19 by S S NIAGARA Z29. BW 71 lbs.

T L 65 **TL ELBA 65**
COW • 18324600 • CALVED: 09/07/2015 • TATTOO:65
 Werner War Party 2417 Connealy Onward #
RB TOUR OF DUTY 177 BAAR USA Lady Jaye 489
 16984170 B A Lady 6807 308 Vermilion Dateline #
 BD Lady Hi Flyer 302

Leachman Right Time 338 5605 Hyline Right Time 338 #
T L ELBA 289 Leachman Erica 1201
 17421080 Elba T L 202 T L A R Kingpin
 Elba T L 930

CED +3 BW +3.0 WW +63 YW +110 M +25 SC I+.34 DOC I+23 \$B+ 139
 Another great Elba female from the high performance sire, Tour of Duty. Calving Interval 2@378. Granddaughters of the powerful Elba 202. Pasture exposed after 11/28/2018 to DEER VALLEY NASHVILLE 5650.

T L 621 **T L BEAUTY 621**
COW • 180424150 • CALVED: 01/17/2016 • TATTOO:621
 Connealy Product 568 G A R Retail Product #
CONNELLY FINAL PRODUCT Pride fine of Conanga 566
 15848422 Ebonista of Conanga 471 # Connealy Deep Canyon 454 #
 Ebonisa of Conanga 5469

Mytty In Focus # SAF Focus of ER #
T L BEAUTY 821 Mitty Countess 906
 16006337 # T L Beauty 617 Papa Georgeo 103
 VDAR Beauty 113

CED +5 BW +1.3 WW +55 YW +96 M +29 \$B +115
 From the foundation Beauty family in the V D A R program tracing to 228, she offers a great blend of consistent performance genetics. Pasture exposed after 11/28/2018 to DEER VALLEY NASHVILLE 5650.

T L 639 **MEAD DONNA Q1135**
COW • 18780769 • CALVED: 08/25/2016 • TATTOO:Q1135
 Connealy Consensus 7229 # Connealy Consensus
CONNELLY BLACK GRANITE Blue Lilly of Conanga 16
 17028963 Eura Elga of Conanga 9109 # SAV Bismarck 5682 #
 Eura Cal of Conanga 56B

HA Image Maker 0415 # Hero 6267 of R R 2418 #
MEAD DONNA J458 H A Rito Blackcap 9038
 16916374 Finks Donna 475 2509 ND # Boyd New day 8005 #
 Finks Donna 2509 903 602C

CED +14 BW +1.1 WW +72 YW +128 M +31 SC +.94 DOC +14 \$B +137
 A powerful performance daughter of Black Granite from a dam by Image Maker, high performance represented in this young female. Check her wide range of EPD performance. Pasture Exposed after 11/28/2018 to CROOK MT LINE WINDY 2870.

FALL CALVING COWS

TL
641

MEAD BARBARA Q528

COW • 18541579 • CALVED: 12/02/2015 • TATTOO: Q528

Connealy Final Product # Connealy Product 568

SITZ INVESTMENT 660Z Ebonista of Conanga 471 #
17179119 Sitz Ellunas Elite 656T # Sitz Upward 307R #
Sitz Ellunas Elite 35M

Connealy Confidence 0100 # Connealy Tobin

MEAD BARBARA M097 Becka Gala of Conanga 8281
17596492 Mead Barbara K403 Boyd New Day 8005 #
MAF Barbara D106

CED +6 BW -.3 WW +51 YW +95 M +28 SC +.99 DOC +14 \$B +107

A double load of Connealy performance breeding in this daughter of Investment. Heifer calf at side (Lot 641A) born 8/20/19 by CONNEALY IMPRESSION. BW 66 lbs.



T L POLLY 223

TL
76

T L MISS WIX 76

COW • 18637054 • CALVED: 09/09/2016 • TATTOO: 76

Connealy Consensus KMK Alliance 6595 187 #

CONNEALY CONQUEST Blinda of Conanga 004
17888696 Boka Bay of Conanga 13X Kesslers Frontman R001#
Boka Bette of Conanga 9258

Cole Creek Blk Cedar 40V Cole Creek Black Cedar 46P

T L MISS WIX 46 Cole Creek Juanadamere 91N #
17673887 Miss Wix 974 of McCumber Sitz Rainmaker 6536
Miss Wix 640 of McCumber

CED +9 BW +.8 WW +53 YW +92 M +24

From the Miss Wix family that is hard to beat on all levels of performance in any program. Bred to DEER VALLEY GROWTH FUND, exposed after 11/28/2018 to Crook Mt Line Windy 2870.

TL
709

TL POLLY 709

COW • 18626235 • CALVED: 09/30/2016 • TATTOO: 709

Cole Creek Black Cedar 46P C H Quantum 6247 #

COLE CREEK BLK CEDAR 40V Cole Creek Clova Juanada 67
16134349 Cole Creek Juanadamere 91N # Cole Creek 104 Juanada
0157 Cole Creek Juanadamere 238

S Chisum 6175 #

T L POLLY 223

17260774 T L Polly 9103

S Alliance 3313

S Gloria 464 #

H A Image Maker 0415 #

VDAR Polly 9059

CED +2 BW +2.8 WW +52 YW +82 M +14 \$B +97

An own daughter of the great Madelia 740, maternal icon at TL Ranch. Calving Interval is 3@363. Bred to CONNEALY IMPRESSION, exposed after 11/28/2018 to Crook Mt Line Windy 2870.

TL
79

T L MISS MADELIA 79

COW • 18637058 • CALVED: 09/11/2016 • TATTOO: 79

Connealy Consensus KMK Alliance 6595 187 #

CONNEALY CONQUEST Blinda of Conanga 004
17888696 Boka Bay of Conanga 13X Kesslers Frontman R001#
Boka Bette of Conanga 9258

TC Franklin 619 #

T L MADELIA 281

17260908 T L Madelia 740

TC Total 410 #

TC Marcia 1069 #

Papa Equator 2928 #

Madelia T L 114

CED +10 BW +.2 WW +49 YW +86 M +21 SC I+.79 DOC I+8 \$B +108

A Conquest daughter from the popular Madelia family line at T L Ranch. Pasture exposed after 11/28/2018 to CROOK MT LINE WINDY 2870..

TL
722

CIRCLE A MISS WIX 6479

COW • 18720176 • CALVED: 09/01/2016 • TATTOO: 6479

RA Lincoln W144 #

S MCCOY 124

17007979 S Mayflower 751 #

Reich Lead On 424 #

RA Brandy P11 #

G A R Grid Maker #

S Mayflower 2118

SS Objective T510 0T26 # SS Traveler 6807 T510 #

CIRCLE A MISS WIX 9188

16326591 BPAR Miss Wix 049 4077 Genetics By Design 049 #

BPAR Miss Wix 9126 3175

CED +7 BW +1.9 WW +56 YW +104 M +25 I+1.36 DOC I+23 \$B +124

A high growth female loaded with a powerful background of performance genetics. Bull Calf at side (Lot 722A) born 8/23/19 by BALDRIDGE COLONEL C251. BW 80 lbs.

TL
701

T L DIVIDEND GIRL 701

COW • 18639135 • CALVED: 09/11/2016 • TATTOO: 701

Connealy Reflection # Bon View New Design 878 #

CONNEALY IMPRESSION # Happy Grill of Conanga 6260
15543702 Pearl Pammy of Conanga 194 Vermilion Dateline 7078 #
Pearl Jam of Conanga 6114

Crook Mt Really Windy 104 Crook Mt Really Windy 141 #

T L DIVIDEND GIRL 49

17673884 TL Dividend Girl 65

Erica 330 of Crook Mt

GDAR SVF Traveler 234D #

C S C Dividend Girl 926

CED +9 BW +1.7 WW +48 YW +82 M +24 SC I+1.36 DOC I+15 \$B +100

Impression daughter are tremendous investments for any progressive program, whenever you can find them for sale. Her dam sells in this sale. Exposed after 11/28/2018 to Crook Mt Line Windy 2870.



DEER VALLEY NASHVILLE 5650

FALL CALVING COWS

TL 723 **CIRCLE A MISS BURGESS 6471**
COW • 18720168 • CALVED: 08/30/2016 • TATTOO:6471
 S A V Bismarck 5682 # G A R Grid Maker #
S A V BRUISER 9164 S A V Abigale 0451
 16396531 SAV Miss Bobbie 7463 # S A V 004 Predominant 4438 #
 S A V Miss Bobbie 4177

H A Image Maker 0415 # Hero 6268 of R R 2418 #
CIRCLE A MISS BURGESS 6471 H A Rito Blackcap 9038
 17429528 Circle A Miss Burgess 8452 B/R Ambush 28 #
 Circle A Miss Burgess 5616 #

CED +10 BW +.3 WW +61 YW +93 M +27 SC I+.27 \$B +117
 Calving ease, loaded with Schaff Angus Valley breeding and topped out through Image Maker, a unique blend of powerful performance genetics. Heifer Calf at side (Lot 723A) by S S NIAGARA Z29. BW 71 lbs.

TL 725 **CIRCLE A ROYAL QUEEN 6358**
COW • 18720067 • CALVED: 08/15/2016 • TATTOO:6358
 Connealy Reflection # Bon View New Design 878 #
CONNELY IMPRESSION # Happy Grill of Conanga 6260
 15543702 Pearl Pammy of Conanga 194 Vermilion Dateline 7078 #
 Pearl Jam of Conanga 6114

SAV Angus Valley 1867 S A V Iron Mountain 8066 #
CIRCLE A ROYAL QUEEN 4238 S A V May 2397 #
 18029586 Circle A Royal Queen 1159 Circle A Endurance 9172
 Circle A Royal Queen 7403

CED +12 BW -1.1 WW +49 YW +83 M +20 \$B +117
 A calving ease daughter of Impression from the Royal Queen family line, she'll work in any program. Bred to S S NIAGARA Z29, exposed after 11/28/2018 to Crook Mt Line Windy 2870.

TL 727 **TL DIXIE ERICA 727**
COW • 18920493 • CALVED: 06/20/2017 • TATTOO:727
 Connealy Capitalist 028 # S A V Final Answer 035 #
TL SANGRIA Prides Pita of Conanga 8821
 18081207 T L Miss Wix 226 S Chisum 6175 #
 T L Miss Wix 989

Harrison Onward 9089 Sitz Onward 454S
DIXIE ERICA OF BA 4077 HLL Essa 009S
 17910029 Dixie Erica of BA 8914 GDAR Game Day 6233
 Dixie Erica of BA 8914

CED +5 BW +1.2 WW +54 YW +95 M +30 \$B +112
 A granddaughter of Capitalist from an Onward dam, who sell in this sale as 4077. Pasture exposed after 11/28/2018 to H A MONTANA PRIME 7504.



S S NIAGARA Z29

TL 83 **TL MISS WIX**
COW • 18954955 • CALVED: 09/20/2017 • TATTOO:83
 RR 2418 Hero 0616 # Hero 6267 of R R 2418 #
RR My Hero 0238 Dixie Erica of RR 8476 #
 16625211 RR Envious Blackbird 6539 # EXAR Scotch Cap 816 #
 RR Envious Blackbird 6539

Cole Creek Blk Cedar 40V Cole Creek Black Cedar 46P#
T L MISS WIX 46 Cole Creek Juanadamere 91N#
 17673887 Miss Wix 974 of McCumber Sitz Rainmaker 6536 #
 Miss Wix 640 of McCumber

CED +10 BW -.2 WW +55 YW +94 M +28 SC I+1.09 DOC I+20 \$B +94
 BW 71 lbs. WW 784 lbs. The Hero bull has left many great females in the program. Bull Calf at side (Lot 83A) born 8/27/19 by VERMILION SPUR. BW 68 lbs.

TL 84 **TL RITO BLACKBIRD 84**
COW • 18987735 • CALVED: 09/13/2017 • TATTOO:84
 Connealy Product 568 G A R Retail Product #
CONNELY FINAL PRODUCT Pride Fine of Conanga 566
 15848422 Ebonista of Conanga 471 # Connealy Deep Canyon 454 #
 Ebonisa of Conanga 5469

HF Kodiak 5R Sandy Bar Advantage 43M
T L RITO BLACKCAP 285 Wilbar Ruby 955N
 17421073 Rito Blackcap 9038 TL111 Sitz Alliance 6595 #
 H A Rito Blackcap 9038

CED +5 BW +.9 WW +43 YW +79 M +21 SC I+.83 DOC I+16 \$B +111
 BW 77 lbs., WW 608 lbs. Final Product on a Kodiak from the Rito Blackcap family, great genetics represented here. Pasture exposed after 11/28/2018 to H A MONTANA PRIME 7504.

TL 86 **TL ELBA 86**
COW • 18954960 • CALVED: 10/20/2017 • TATTOO:86
 RR 2418 Hero 0616 # Hero 6267 of R R 2418 #
RR My Hero 0238 Dixie Erica of RR 8476 #
 16625211 RR Envious Blackbird 6539 # EXAR Scotch Cap 816 #
 RR Envious Blackbird 6539

SAV Final Answer 0035 # Sitz Traveler 8180 #
TL ELBA 57 SAV Emulous 8145
 18081046 T L Elba 201 Leachman Right Time 338-5605 #
 Elba TL 202

CED I+11 BW I+.3 WW I+56 YW I+97 M I+31 SC I+1.36 DOC I+20 \$B +111
 BW 70 lbs. Another powerful young 0238 daughter from the heart of the replacements. Sells with a bull calf at side (Lot 86A) born 8/27/19 by VERMILION SPUR. BW 72 lbs.

TL 87 **TL MADELIA 87**
COW • 18954951 • CALVED: 11/06/2017 • TATTOO:87
 Connealy Capitalist 028 # S A V Final Answer 035 #
TL SANGRIA Prides Pita of Conanga 8821
 18081207 T L Miss Wix 226 S Chisum 6175 #
 T L Miss Wix 989

Crook Mt Really Windy 104 Crook Mt Really Windy 141 #
TL MADELIA 603 Erica 330 of Crook Mt
 18316626 T L Madelia 739 # Papa Equator 2928 #
 Madelia T L 114

CED I+7 BW I+1.1 WW I+54 YW I+85 M I+29
 A daughter of the popular Capitalist son, Sangria, at TL Ranch and from the icon family in the program. Pasture exposed after 11/28/2018 to H A MONTANA PRIME 7504.

COW/CALF PAIRS

T L 126 **BIRKS FOREVER LADY 126**

COW • 18666061 • CALVED: 04/18/2016 • TATTOO:126
 Mohnen Density 730 S A V 004 Density 4336 #
MOHNEN SOUTH DAKOTA 402 Mohnen Jilt 910 #
 17250190 Mohnen Jilt 539 TC Aberdeen 759 #
 Mohnen Jilt 787 #

SAV Bismarck 5682 # G A R Grid Maker #
BIRKS FOREVER LADY 21 S A V Abigale 0451
 17052262 Birks Forever Lady 100 GDAR SVF Traveler 234D #
 B&M Forever Lady 294

CED I+5 BW I+3.1 WW I+56 YW I+95 M I+27 SC I+74 DOC I+19 \$B +124

A Forever Lady tracing to the foundation Forever Lady family developed in the Birk performance program. Sells with a heifer calf at side (Lot 126A) born 5/02/19 sired by DEER VALLEY NASHVILLE 5650. Exposed after 6/10/19 to DEER VALLEY NASHVILLE 5650.

T L 1616 **JSS DELIA 1616**

COW • 18558583 • CALVED: 01/11/2016 • TATTOO:1616
 S Chisim 6175 # S Alliance 3313
KOUPALS B&B FORT KNOX 2077 S Gloria 464 #
 17322785 B&B Blkbd Progress 0032 S A V Pioneer 7301 #
 B&B Blkbd Progress 8035 #

M J Right Time 374 Leachman Right Time #
JSS DELIA LASS 911 V R Bonny Lass 023-742
 16476680 JSS Delia Lass 2529 Bon View New Design 878 #
 JSS Delia Lass 2309

CED +17 BW +1.0 WW +50 YW +90 M +23 DOC I+16 \$B +117

A granddaughter of Chisim with a dam backed by both Right Time and 878, she'll work. Sells with a bull calf at side born 2/4/19, (Lot 1616A) sired by RR MY HERO 0238. Bred 6/18/19 to DEER VALLEY GROWTH FUND, exposed to Deer Valley Nashville 5650.

T L 247 **T L HEATHERBLOOM 247**

COW • 17260800 • CALVED: 01/19/2012 • TATTOO:247
 RR 2418 Hero 0616 # Hero 6267 of R R 2418 #
RR My Hero 0238 Dixie Erica of RR 8476 #
 16625211 RR Envious Blackbird 6539 # EXAR Scotch Cap 816 #
 RR Envious Blackbird 6539

AAR Really Windy 1205 # AAR Windy Ridge 362
T L HEATHERBLOOM 013 AAR Lady Kelton 2170
 16621402 T L Heatherbloom 85 S A V 8180 Traveler 004 #
 Heatherbloom TL 201 #

CED +8 BW +9 WW +57 YW +104 M +34 \$B +98

The Hero/Windy combination has really worked well in the TL Ranch program. She has a weaning ratio of 3@112. Sells with a heifer calf at side (Lot 247A) born 2/6/19 sired by CROOK MT LINE WINDY 2870. Bred 6/18/19 to TEX PLAYBOOK 5437, exposed after 6/28/19 to Deer Valley Nashville 5650.

T L 255 **TL BEAUTY 255**

COW • 17262775 • CALVED: 01/25/2012 • TATTOO:255
 C H Quantum 6247 # C H Quantum 3330 #
COLE CREEK BLACK CEDAR 46P C H Blackbird 0136
 14496765 Cole Creek Clova Juanada 67 A A R Windy Ridge 523 #
 Cole Creek Juanada 811

Papa Hero EQ 6034 Papa Equator 2928 #
BEAUTY T L 52 # Papa Blkcp McHenry PLD 2977
 14911170 V D A R Beauty 113 SVF GDAR 216 LTD #
 V D A R Beauty 4034

CED +2 BW +2.8 WW +52 YW +82 M +14 \$B +97

A great 46P daughter from the Beauty family with a weaning ratio of 3@106, one of the good ones with a great bull calf at side Lot (255A) born 1/19/19 sired by BALDRIDGE COLONEL C251. Bred 6/18/19 to DEER VALLEY GROWTH FUND, exposed after 6/28/19 to DEER VALLEY NASHVILLE 5650.

T L 276 **TL MADELIA 276**

COW • 17260775 • CALVED: 02/17/2012 • TATTOO:276
 TC Franklin 619 TC Total 410 #
LEACHMAN MONTANA TC Marcia 1069 #
 16648546 Leachman Erica 3031 Summitcrest High Prime 0H29 #
 Leachman Erica 1221

HARB Pendleton 765 JH S A V Final Answer 035 #
T L Madelia 916 HARB Black Lady 375 JH
 16410788 T L Madelia 740 Papa Equator 2928 #
 Madelia T L 114

CED +3 BW +2.3 WW +59 YW +98 M +29 SC I+23 DOC I+14 \$B +135

A Montana daughter from the super producing Madelia family developed at TL Ranch, one of the good consistent producers offered here. Sells with a bull calf at side Lot (276A) born 5/01/19 sired by DEER VALLEY NASHVILLE 5650, exposed to DEER VALLEY NASHVILLE 5650.

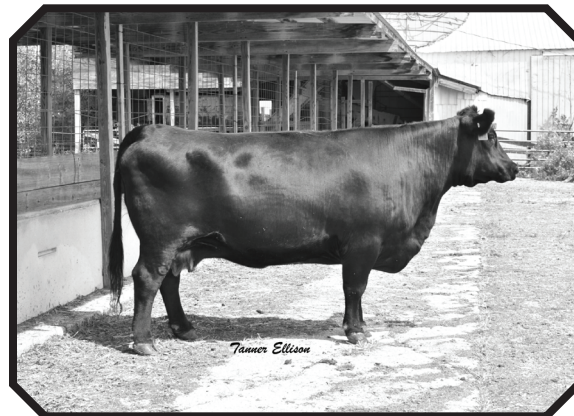
T L 42 **STEVENSON LADY BLACKCAP 42**

COW • 18403715 • CALVED: 02/27/2016 • TATTOO:42
 MCC Daybreak # Boyd New Day 8005 #
QUAKER HILL RAMPAGE 0A36 MCC Miss Focus 134 #
 16925771 QHF Blackcap 6E2 OF4V16 4355 Ideal 4355 of OT26 2440
 QHF Blackcap 4V16 of 1H8

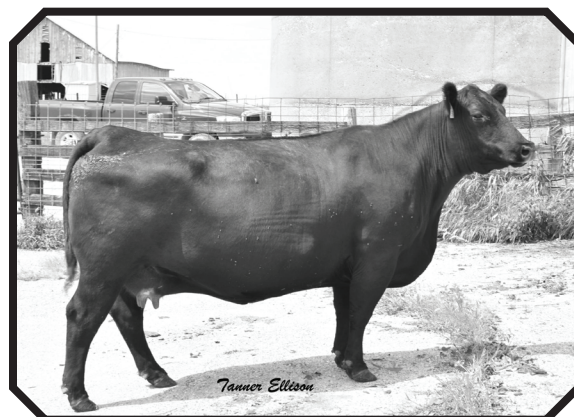
S A V Brilliance 8077 # S A V Bismarck 5682 #
SAF LADY BLACKCAP 14 S A V Blackcap May 5270
 17772162 MF Blackcap 156 M F New Morpheus 9616
 MF Blackcap 03

CED I+7 BW +2.7 WW +67 YW +111 M +17 SC I+94 DOC I+1 B +146

A growthy Rampage daughter from the Blackcap family, high yearling and \$B figures add to her value. Sells with a bull calf at side Lot (42A) born 3/19/19 sired by DEER VALLEY NASHVILLE 5650. Bred 6/18/19 to BALDRIDGE COLONEL C251, exposed after 6/28/19 to DEER VALLEY NASHVILLE 5650.



T L HEATHERBLOOM 247



TL BEAUTY 255

COW/CALF PAIRS

TL
526

TL HEATHERBLOOM 526

COW • 18073289 • CALVED: 02/12/2014 • TATTOO:526

HF Kodiak 5R Sandy Bar Advantage 43M
 Wilbar Ruby 955N
 R R Ultra Hero 7401 #
 H A Rito Lady 4167

T L KODIAK 964

17421074 H A 4167 Lady 1013

RR My Hero 0238

T L HEATHERBLOOM 247

17260800 T L Heatherbloom 013

RR 2418 Hero 0616 #

RR Envious Blackbird 6539 #

AA R Really Windy 1205 #

T L Heatherbloom 85

CED +7 BW +1.6 WW +63 YW +113 M +24 \$B +112

A Kodiak bred female from the highly productive Heatherbloom family line at TL Ranch. Sells with a bull calf at side (Lot 526A) born 1/22/19 sired by RR MY HERO 0238 Bred 6/18/19 to BALDRIDGE COLONEL C251, exposed after 6/28/19 to Deer Valley Nashville 5650.

TL
712

TL HEATHERBLOOM 712

COW • 18710392 • CALVED: 01/16/2017 • TATTOO:712

Hero 6267 of RR 2418 # R R Hero 6267 #

H A IMAGE MAKER 0415 #

13739532 H A Rito Blackcap 9038

R R Everelda Entense 0413

H 96 Rito 2100 7371

H 96 Blackcap 3835

RR My Hero 0238

T L HEATHERBLOOM 247

17260800 T L Heatherbloom 013

RR 2418 Hero 0616

RR Envious Blackbird 6539

AA R Really Windy 1205 #

T L Heatherbloom 85

CED +9 BW +1.0 WW +53 YW +92 M +35 \$B +94

An own daughter of Image Maker and paternal sister to the high selling cow of the TL's 2016 sale at \$7000. Sells with a bull calf at side (Lot 712A) born 1/16/19 sired by TL THUNDER. Bred 6/18/19 to MONUMENTAL exposed after 6/28/19 to Deer Valley Nashville 5650.

TL
714

TL HEATHERBLOOM 714

COW • 18803695 • CALVED: 01/21/2017 • TATTOO:714

Hero 6267 of RR 2418 # R R Hero 6267 #

H A IMAGE MAKER 0415 #

13739532 H A Rito Blackcap 9038

R R Everelda Entense 0413

H 96 Rito 2100 7371

H 96 Blackcap 3835

T L Kodiak 964

T L HEATHERBLOOM 526

18073289 T L Heatherbloom 247

HF Kodiak 5R

RR Envious Blackbird 6539

RR My Hero 0238

T L Heatherbloom 013

CED +10 BW +.8 WW +60 YW +106 M +29

A daughter of Image Maker and paternal sister Lot 712 and to the high selling cow of the TL's 2016 sale at \$7000. Sells with a heifer calf at side (Lot 714A) born 3/10/19 sired by H A DOUBLE UP. Bred 6/18/19 to MONUMENTAL exposed after 6/28/19 to Deer Valley Nashville 5650.

BRED COWS



T L HEATHERBLOOM 526

TL
L107

MEAD WITCH L107

COW • 17315673 • CALVED: 01/12/2012 • TATTOO:L107

Sitz Traveler 8180 #

GDAR Traveler 71 #

S A V Final Answer 0035 #

13592905

S A V Emulous 8145

Sitz Everelda Entense 1137

Bon View Bando 598 #

S A V Sky Emulous 2124

MCC Daybreak #

Boyd New Day 8005 #

MEAD WITCH J289

16708512

Baker's Witch 7151

MCC Miss Focus 134 #

G A R Retail Product #

Bakers Witch 8098

CED +6 BW +1.8 WW +47 YW +88 M +15 SC I+.70 DOC I+13 \$B +126

A top performing Final Answer daughter, her Mead Magnitude heifer calf will be retained in the breeding program. Bred 6/18/19 to S S NIAGARA Z29, exposed after 6/28/19 to Deer Valley Nashville 5650.

TL
281

T L MADELIA 281

COW • 17260908 • CALVED: 03/05/2012 • TATTOO:281

TC Total 410 #

Bon View New Design 208 #

TC FRANKLIN 619

15462648

TC Marcia 1069 #

TC Erica Eileen 2047

Connealy Forefront #

TC Marcia 7105

Papa Equator 2928 #

Papa Power 096 #

T L MADELIA 740

158746121

Madelia T L 114

Papa Envious Blackbird 8849 #

Rito 2100 GDAR #

SAF Madelia 0087

CED +7 BW +1.7 WW +46 YW +80 M +24 SC +.40 DOC +10 \$B +105

One of the truly great daughters of 740, top performance and consistency throughout. Bred to CONNEALY THUNDER, exposed after 6/28/19 to Deer Valley Nashville 5650.



T L ROYAL LADY 219 --High Selling Cow 2016 Sale by Image Maker



T L MADELIA 281

BRED COWS

TL 612 TL EVERELDA ENTENSE 612
COW • 18424208 • CALVED: 01/10/2016 • TATTOO:612
 Connealy Mentor 7374 G A R Retail Product #
CONNEALY COUNSELOR Executa of Conanga 939 #
 16761497 Jaze of Conanga 234 Connealy Lead On #
 Jaycee of Conanga 233

RR Consensus 1161 Connealy Consensus 7229 #
RA EVERELDA ENTENSE 4070 RR Dixie Erica 3141
 17914776 BA Everelda Entence 2011 H A Image Maker 0415 #
 BA Everelda Entence 9074

CED +8 BW +.5 WW +49 YW +87 M +28 \$B +125

A strong Connealy performance pedigree represented here. Great maternal genetics in this one. Bred 6/18/19 to DEER VALLEY GROWTH FUND, exposed after 6/28/19 to Deer Valley Nashville 5650.

TL 622 TL ERISKAY 622
COW • 18423379 • CALVED: 01/19/2016 • TATTOO:622
 CRA Bextor 872 5205 608 # BAR Ext Traveler 205 #
G A R Prophet CRA Lady Jaye 608 498 S Easy
 16295688 GAR Objective 1885 SS Objective T510 0T26 #
 GAR 1407 New Design 2232

FF Elevate Y34 Sitz Upward 307R #
ERISKAY of BA 4002 FF Missie Blackbird R50
 17914776 Eriskay of BA 2009 A A R Ten X 7008 S A #
 Eriskay of BA 9003

CED +12 BW +.1 WW +64 YW +114 M +28 \$B +146

A tremendous female here, low birth, with 113 lbs. of yearling growth and a \$B at 146, she's bred right for optimum performance. Bred 6/18/19 to GAR SURE FIRE, exposed after 6/28/19 to Deer Valley Nashville 5650.

TL 730 TL CIRCLE A SCOTCH CAP 7036
COW • 18823796 • CALVED: 01/08/2017 • TATTOO:7036
 Connealy Reflection # Bon View New Design 878 #
CONNEALY IMPRESSION # Happy Grill of Conanga 6260
 15543702 Pearl Pammy of Conanga 194 Vermilion Dateline 7078 #
 Pearl Jam of Conanga 6114

L/R Colt 45 3045 S/C Medicine Man 01Y7
CIRCLE A SCOTCH CAP 5086 Summitcrest Blizzard 0X62 #
 18193057 Circle A Scotch Cap 7476 # H A Image Maker 0415 #
 Circle A Scotch Cap 4489

CED +10 BW +.1 WW +57 YW +103 M +26 SC I+1.04 DOC I+11 \$B +130

A low birth, high growth daughter of Impression, great young female. Bred 6/18/29 to S S NIAGARA Z29, exposed after 6/28/19 to Deer Valley Nashville 5650.

TL 733 TL CIRCLE A BLACKCAP 7004
COW • 18823784 • CALVED: 01/12/2017 • TATTOO:7004
 Connealy Reflection # Bon View New Design 878 #
JINDRA DOUBLE VISION Happy Grill of Conanga 6260
 15748826 Hoff Rachel 8312 405 Hoff Limited Edition SC 594 #
 Hoff Miss Expo S C 4223

Mohnen Brushpopper 295 # Mohnen Brushpopper 353
CIRCLE A BLACKCAP 3013 Mohnen Jilt 1283
 17689670 Circle A Blackcap 8140 Connealy Meat Maker 4834
 D/D Blackcap 4029

CED +1 BW +3.1 WW +61 YW +113 M +28 SC I+.23 DOC I+17 \$B +162

High growth performance and \$Beef figures in this Double Vision daughter. Bred 6/18/29 to BALDRIDGE COLONEL C251, exposed after 6/28/19 to Deer Valley Nashville 5650.

TL 737 TL MEAD QUEEN R676
COW • 18866112 • CALVED: 11/26/2016 • TATTOO:R676
 A A R Ten X 7008 S A # Mytty In Focus #
S A V TEN SPEED 3022 A A R Lady Kelton 5551 #
 1763563 SAV Madame Pride 1134 # S A V Bismarck 5682 #
 SAV Madame Pride 9100

Connealy Consensus 7229 # Connealy Consensus #
MEAD QUEEN M893 Blue Lilly of Conanga 16
 17806738 Mead Queen F522 S A V 8180 Traveler 004 #
 Thomas Queen 5056

CED +4 BW +2.4 WW +62 YW +113 M +23 \$B +147

A blend of high performance genetics and proven power represented here. Bred 6/18/29 to DEER VALLEY GROWTH FUND, exposed after 6/28/19 to Deer Valley Nashville 5650.

TL 739 TL MEAD BARBARA R301
COW • 18866110 • CALVED: 11/29/2016 • TATTOO:R301
 Rito 707 of Ideal 3407 7075 R R Rito 707 #
S A V RENOWN 3430 Ideal 3407 of 1418 076
 17633839 SAV Blackcap May 4136 S A V 8180 Traveler 004 #
 SAV May 2397 #

SAV Final Answer 0035 # Sitz Traveler 8180 #
MEAD BARBARA L162 S A V Emulous 8145
 17315718 Mead Barbara F069 Wulffs Ext 6160 #
 M A F Barbara B018 #

CED +5 BW +1.0 WW +70 YW +117 M +20 SC I+.61 DOC I+26 \$B +113

An intensely Schaff Angus Valley bred female rich in the performance of that program. Bred 6/18/29 to DEER VALLEY GROWTH FUND, exposed after 6/28/19 to Deer Valley Nashville 5650.

TL 807 TL HEATHERBLOOM 807
COW • 19236211 • CALVED: 01/26/2018 • TATTOO:807
 Crook Mt Really Windy 141 # A A R Really Windy 1205 ##
CROOK MT LINE WINDY 2870 Revolution 155 of Crook Mt
 17261267 Revolution 223 of Crook Mt # Crook Mt Really Windy 141 #
 Revolution 161 of Crook Mt

T L Kodiak 964 HF Kodiak 5R
TL HEATHERBLOOM 526 H A 4167 of Lady 1013
 18073289 T L Heatherbloom 247 R R My Hero 0238
 T L Heather bloom 013

CED +5 BW +1.5 WW +47 YW +78 M +25 SC +1.45 DOC +15 \$B +78

A young Heatherbloom by the popular 2870 at T L Ranch. This will be the first young female bred to the new herd sire, DNAmite, to leave T L Ranch. Bred 6/18/29 to MW DNAMITE, exposed after 6/28/19 to HA Montana Prime



DEER VALLEY GROWTH FUND

Pick Of The Fall 2018 Heifers
Pick will go to the highest bidder and must be chosen
Immediately after selling- only 1 pick will be sold.

- 91 - 19236229--Mead Maternal Power N240
- 92 - 19236226--Jindra Acclaim
- 93 - 19236228--Jindra Acclaim
- 94 - 19236864--Baldrige Colonel C251
- 95 - 19236222--Jindra Acclaim
- 96 - 19236869--Mead Magnitude
- 97 - 19236872--Mead Magnitude
- 98 - 19236879--Mead Magnitude

- 99 - 19236218--Jindra Acclaim
- 901 - 19236903--Baldrige Colonel C251
- 902 - 19236894--TEX Playbook 5437
- 903 - 19236875--Baldrige Colonel C251
- 904 - 19236873--TEX Playbook 5437
- 905 - 19236878--Baldrige Colonel C251
- 906 - 19236860--Baldrige Colonel C251
- 907 - 19236867-- Baldrige Colonel C251



Mead Magnitude



TEX Playbook 5437

Pick Of The Spring 2019 Heifers
Pick will go to the highest bidder and must be chosen
Immediately after selling- only 1 pick will be sold.

- 909 - 19450401--Sire Mead Magnitude
- 912 - 19448326--Jindra Acclaim
- 914 - 19445199--Baldrige Colonel C251
- 915 - 19448324--Jindra Acclaim
- 917 - 19445198--S S Niagara Z29
- 918 - 19445177--Baldrige Colonel C251

- 920 - 19445189--S S Niagara Z29
- 923 - 19445195--RR My Hero 0238
- 928 - 19445197--RR My Hero 0238
- 929 - 19445188--RR My Hero 0238
- 932 - 19445194--Baldrige Colonel C251



Jindra Acclaim



S S Niagara Z29

TL RANCH REFERENCE SIRES

TL A DEER VALLEY NASHVILLE 5650
 BULL • 18485830 • CALVED: 08/13/2015 • TATTOO:5650
 CED +8 BW +1.7 WW +74 YW +132 M +35 SC +1.53 DOC +16 \$B +134

TL B JINDRA ACCLAIM
 BULL • 17972810 • CALVED: 01/13/2014 • TATTOO:134
 CED +9 BW +.6 WW +77 YW +153 M +28 SC -.02 DOC +27 \$B +215

TL C MEAD MAGNITUDE
 BULL • 18543414 • CALVED: 12/1043/2015 • TATTOO:Q452
 CED +14 BW -.5 WW +84 YW +150 M +42 SC +1473 DOC +38 \$B +166

TL D BALDRIDGE COLONEL C251
 BULL • 18493773 • CALVED: 04/23/2015 • TATTOO:C251
 CED +3 BW +1.6 WW +65 YW +122 M +17 SC +.89 DOC +29 \$B +160

TL E S S NIAGARA Z29
 BULL • 17287387 • CALVED: 01/05/2012 • TATTOO:Z29
 CED +4 BW +1.0 WW +71 YW +138 M +28 SC +.60 DOC +22 \$B +157

TL K H A MONTANA PRIME 7504
 BULL • 18914679 • CALVED: 01/30/2017 • TATTOO: 7504
 CED +15 BW -2.8 WW +56 YW +96 M +21 SC +.87 DOC +22 \$B +96

TL F DEER VALLEY GROWTH FUND
 BULL • 18827828 • CALVED: 0/22/2017 • TATTOO:71122
 CED +8 BW +2.3 WW +101 YW +174 M +32 SC +.66 DOC +32 \$B +175

TL G TEX PLAYBOOK 5437
 BULL • 18414912 • CALVED: 08/03/2015 • TATTOO:5437
 CED +14 BW -.1 WW +59 YW +103 M +36 SC +.93 DOC +32 \$B +134

TL H MW DNAMITE
 BULL • 18511488 • CALVED: 08/02/2016 • TATTOO:6D80
 CED +12 BW -.8 WW +82 YW +154 M +39 SC +.82 DOC +22 \$B +194

TL I CROOK MT LINE WINDY 2870
 BULL • 17261267 • CALVED: 03/24/2012 • TATTOO:2870
 CED +10 BW +.2 WW +20 YW +42 M +26 SC +1.40 DOC +30 \$B +39

TL J TL OLLIE 287
 BULL • 18711034 • CALVED: 01/14/2017 • TATTOO:187
 CED +6 BW +1.2 WW +71 YW +126 M +28 SC +1.35 DOC +22 \$B +151

This Semen is priced and for sale whenever you want it. It will not be auctioned in the sale. Call and reserve what you want. First come-first served. Bring your tank sale day, sells in increments of 10.

Connealy Impression	40 Straws	\$40
Sitz Alliance 6595	10 Straws	\$60
Connealy Spur	60 Straws	\$25
Connealy Black Granite	10 Straws	\$35
Cole Creek Black Cedar 46P	30 Straws	\$50
Rito 616 of 4B20 6807	8 Straws	\$100
Bubs Southern Charm AA31	7 Straws	\$30
MW DNAmite 3321	80 Straws	\$15 Sale Day Special

Angus Auctions.com **DVAuction**
 Broadcasting Real-Time Auctions

Watch and Bid Online at www.angusauction.com

We are pleased to bring you real-time Internet bidding and a live broadcast of this sale through Angus Auctions/DV Auctions. To watch and bid online, log in to www.angusauctions.com or www.dvauctions.com to create an account prior to the sale beginning.

If you have questions or issues logging in prior to the sale beginning, please contact Laramie Smith at (317) 409-9212.





**13815 220th Ave
Monticello, MO 63457**



Sale Managed By

RANCE LONG, INC

918.510.3464 cell

rlong@rancelong.com

www.rancelong.com

The Home of Fabulous Foundation Females

Sunday, September 29, 2019
1PM at the ranch near Monticello, MO