



IDLAND
CCATTLE
COMPANY R&E



*Focus
byatt DeVries*

**Flush Brother
Sells As Lot 1**

**Musgrave Aviator
January 2018**

COMMON SENSE ANGUS BULL SALE

FEBRUARY 7, 2019

THURSDAY • 1:00 PM • MST

Glendive Livestock Exchange • Glendive, MT



Glen, Connie, Reece Idland
 PO Box 329 • Circle, MT 59215
 406-485-2292 • icc@midrivers.com
idlandcattleco.com

Hello Angus Breeders and Friends!

Another year has come and gone. And within the ever-changing cattle industry another set of hurdles and adjustments have been addressed and implemented and it is through this adversity you gain knowledge to make improvements.

To produce great genetics that will continue to enhance the traits that make up your profitability ICC has remained sight full of where it all starts, the mother cow. This has always been the goal and course of our program.

We take pride in this year's bull offering with their data rivaling some of the top breeders in the industry.

Two standout sires in this year's sale Aviator and 4886. Aviator continues to set the standard for muscle, mass, and real eye appeal along with the bonus of true feed efficiency. It is hard to find any fault in 4886, a real powerhouse whose calves are outperforming themselves and stand out in the pen.

This bull crop has great genetic potential with the advantage of converting forage into pounds more quickly than their contemporaries. Offering not just a select group, but the whole bull offering being at the top of the class. **WEANING top 15%, RADG top 25%, DMI top 35%, SC top 25%, \$W top 15%, \$B top 25%.**

We have made exciting advancements in helping you market your calves! New to the program this year and joining past buyers, we are happy to have on board CCI Feedlots out of Nebraska and placement group Top Dollar Angus Feeder Calf Program.

Again, this year you have a chance to introduce ICC female genetics into your herd with an offering of 15 head of quality heifers sure to add genetic wealth to any program.

Finally, we would like to introduce Beau & Cassie Bieri and family as a new addition to the ICC family. We thank and appreciate their day to day dedication and contributions to our program.

In closing, to our repeat customers, we say, "Thank You" and those new this year to ICC we say "Welcome". Let's have a Bull Sale!

Sincerely,
 Idland Cattle Company



Beau & Cassie Bieri
 and family

THE ICC ADVANTAGE

Our belief has always been that it takes equal parts cow and sire genetics to produce superior seedstock. And that it starts with the mama cow. In our pursuit to build a great herd of Angus cattle, tireless hours and time have been dedicated in the search to find those key traits and genetics that make a great cow and total package. Hurdle by Hurdle and Cow by Cow, the trip has gained us much insight and knowledge into groundbreaking and leading Angus genetics. The rewards are starting to show and our focus on these traits has paid off. We continue to reach out to new feedlots to help place your calves and the positive feedback from customers as well as partners has assured us that we are on the right track.

Given any week starting in January, there are a great many places to purchase Angus bulls. If you compare all the data, we have gathered for you, you'll find that not all black cattle are created equal and that ICC genetic influenced cattle show a greater advantage over the average Angus bull.

This sale will be broadcast live over the internet via Frontier Live Sale. You will be able to see and hear the sale live, and keep up with the bidding via a scrolling bid screen. For buyers that are unable to attend the sale, you will have the option of bidding online or you can place a bid using the telephone bidlines. If you wish to bid on a lot via the telephone bidlines, you are encouraged to call a couple of lots in advance.

In order to place bids on the Internet or over the phone on sale day, you must preregister and obtain a bidder number and a password.

All buyers must register - registrations do not carry over from sale to sale or year to year. **To register, go to www.frontierlivesale.com and click on the link for the Idland Cattle Co. Sale.**

A sale order will be posted in advance of the sale and there is an online catalog available at www.frontierlivesale.com.

For those who wish to simply view the sale without registering, please use the following log on credentials: Username: watchsale - Password: 123456
 Instructions for watching the sale can be found at www.frontierlivesale.com.

We encourage you to register early to avoid any problems and make sure you are set up to view the sale. **Visit Frontier Live Sale for all the details!**



For information:
 Contact
 Scott Fraser
 406-860-6548

SALE BROADCAST LIVE
Bid online @ www.frontierlivesale.com



FEBRUARY 7, 2019 1:00 P.M.

21st Annual Common Sense Angus Bull Sale
Glendive Livestock Exchange, Glendive, Montana



SALE BROADCAST LIVE

Bid online:

www.frontierlivesale.com

For information:

Contact Scott Fraser - 406-860-6548

See inside front cover for bidding instructions.

Sale Day Phones:
888-405-BEEF (2333)

Glen's Cell: 406-974-2293

Connie's Cell: 406-974-2294

Reece's Cell: 406-974-2295

Gary Wall's: 406-208-8536

Scott Fraser: 406-860-6548

Rance Long's: 918-510-3464

Lunch:

Lunch at Noon. Complimentary on behalf of Mountain West Ag.

Sale Site Directions:

From Interstate 94, take exit 215 into Glendive.

Turn south and go toward town.

At first underpass turn left and go under the railroad tracks, turn right and the sale facility is about six blocks.

Glendive Livestock is located directly East, across the railroad tracks from the high school.

Sight Unseen Buyers Program:

If you cannot attend the sale and want to purchase bulls, please give us a call. We will be glad to help you with your order, and guarantee your satisfaction on your purchases.

Sale Managed By
RANCE LONG, INC
918.510.3464 cell
rlong@rancelong.com
www.rancelong.com

Sale Representatives:

Kurt Kangas - American Angus Representative406-366-4190

Frontier Live Sale -

Scott Fraser, Preview Sale Video Online406-860-6548

Western Ag Reporter - John Goggins.....406-698-4159

Western Livestock Journal - Devin Murnin406-860-3181

Auctioneer:

Roger Jacobs406-698-7686 (cell)

Terms and Conditions: Cattle will sell under the standard Terms and Conditions as recommended by the American Angus Assn.

Liability:

All persons who attend the sale do so at their own risk, and responsibility without liability on the part of the ranch owners, sale staff, or sale barn.

Herd Health:

All bulls have been fully vaccinated. Three rounds Express 5 PMH, Vision/Somnus, Long Range and Foot Rot. All bulls will have proper health certificate(s) for immediate shipment, as needed.

First Breeding Season Guarantee:

First Breeding Season Guarantee will be available sale day. Specifics available at Sale Clerk's desk.

Announcements:

All announcements made sale day from the block take precedence over printed material associated with this sale.

Retained Interest:

ICC will retain a one-third semen interest in every bull selling. The buyer will receive full possession and full salvage value. ICC will just remain on the registration paper in case at some point ICC elects to collect semen on the bull or semen sale revenue becomes an option at which time we would share in our one-third ownership with the buyer.

Delivery:

Free delivery within a 400 radius to central points or to the feedlot of your choice. All bulls will be fertility tested and ICC will begin delivery the first week of April 2019.

Registrations:

Certificates of registration will be supplied by the seller to any buyer who requests papers only on sale day.

Bull Development:

All bulls have been developed on a high roughage, higher fiber ration to insure long term soundness and longevity at Idland Cattle Co.

Catalog Information:

- Scrotal measurements and Adjusted YW will also be available sale day on a supplement sheet.
EPDs printed in the catalog as of 12/23/2018

GENOMIC DATA IS AVAILABLE ON THE REGISTERED YEARLING BULLS ON PAGE 32 AND INSIDE BACK COVER.

Volume Buyer Incentive Rebate:

Bring your own trailer to the sale and receive a \$100 rebate on all bulls taken home the day of sale only. See page 31 for details.

★ Calving Ease Rating (CE) ★

Find the CE rating above the PERF INFO.

Calving Ease rating is an objective view of what to expect. Several factors go into the rating: birth weight, BW ratio, bull and cow history accuracy.

- ★★★★ Excellent calving ease, use with confidence on any type of heifers.
★★★ Superior calving ease, should work with most heifers and most situations.
★★ Moderate calving ease, most people will use these bulls on cows, but they can be used on heifers if calving ease is of less concern.
★ We recommend these bulls just for use on cows.

Angus Breed Averages for Non-Parent Bulls

Table with 18 columns: CED, BW, WW, YW, RADG, DMI, SC, DOC, HP, CEM, MILK, CW, MARB, RE, FAT, \$W, \$F, \$B. Values: +6, +1.3, +52, +92, +21, +.30, +.74, +16, +10.8, +9, +24, +38, +.53, +.52, +.010, +47.85, +48.70, +119.161

Idland Cattle Co. Averages for Sale Bulls and Top % Rankings for Non-Parent Bulls

Table with 18 columns: CED, BW, WW, YW, RADG, DMI, SC, DOC, HP, CEM, MILK, CW, MARB, RE, FAT, \$W, \$F, \$B. Values: +7, +1.2, +64, +113, +.26, +.16, +1.14, +21, +12, +11, +26, +47, +.41, +.57, +.016, +63.80, +80.49, +141.66. Percentages: 45%, 45%, 15%, 15%, 25%, 35%, 25%, 30%, 35%, 25%, 35%, 25%, 65%, 45%, 55%, 15%, 15%, 25%

Idland Cattle Co. Averages: Birth Weight: 76 lbs. 205 WT: 734 lbs.

LOT 1 IS A FLUSH BROTHER

MUSGRAVE AVIATOR



CED	BW	WW	YW	RADG	DMI	SC	DOC	CEM	MILK	CW	MARB	RE	FAT	\$W	\$F	\$G	\$B
+10	-1.8	+51	+93	+33	-.80	+1.22	+12	+16	+27	+34	+49	+63	+041	+59.61	+72.64	+33.93	+137.21
25%	5%	55%	50%	4%	2%	20%	65%	1%	30%	60%	50%	30%	90%	25%	25%	60%	30%

zoetis Percent Rank

CED	BW	WW	YW	DMI	YH	SC	DOC	HP	CEM	MK	MW	MH	CW	MB	RE	FAT	TEND
22	3	51	34	3	89	18	56	17	6	23	94	87	82	67	16	66	29



**REF
SIRE**

MUSGRAVE AVIATOR

Bull • Reg: 17264774 • BD: 01/30/12 • Tat: 542

Koupals B&B Identity #

Sitz Upward 307R #

B&B Erica 605 #

S A V Final Answer 0035 #

MCATL Forever Lady 1429-138

ALC Forever Lady R02S

Connealy Onward #

Sitz Henrietta Pride 81M

G A R Exaltation 3144 #

B&B Erica 4064

Sitz Traveler 8180 #

S A V Emulous 8145

Leachman Right Time #

ALC Forever Lady K14P

SEMEN \$24 - CERTIFICATES \$40



**MCATL Forever Lady 1429-138 -
Dam of Musgrave Aviator**



**Linz Shifting Gears -
\$125,000 son of Aviator**

- The cowman's favorite at ORigen...he's medium framed, full bodied and thick. You'll be even more impressed when you see the robust ribcage, the muscle down his top and the way he carries depth in to his lower quarter. This bull is full of meat.
- A sleep-all-night heifer bull with high accuracy EPDs, great feet and docile disposition. He is setting the industry standard for calving ease, muscle and phenotype.
- Aviator is homozygous TT for the Leptin gene that improves feed efficiency, appetite, marbling and maternal strength. Since coming across the Canadian border in March, 2016 he has sold more semen this year directly through ORigen than any bull in the lineup. Cattleman commented that as a mature bull would have so much top shape, hip and stifle expression as any bull they have seen for a while and desire to build their cowherd in that direction.
- Many cattlemen across the country run their cowherds under commercial conditions. They demand that they not only survive under these harsh environmental conditions, but thrive. Here is a bull that will turn around your entire cowherd.



*Focus
Wyatt DeVries*

Lot 1 - ICC Identity 1429-8264



ICC IDENTITY 1429-8264

Bull • Reg: +19166953 • BD: 01/21/18 • Tat: 8264



Koupals B&B Identity #

Sitz Upward 307R #
B&B Erica 605 #

Connealy Onward #
Sitz Henrietta Pride 81M
G A R Exaltation 3144 #
B&B Erica 4064



MCATL Forever Lady 1429-138

S A V Final Answer 0035 #
ALC Forever Lady R02S

Sitz Traveler 8180 #
S A V Emulous 8145
Leachman Right Time #
ALC Forever Lady K14P

CE: ★★

PERF INFO		EPDs						
BW	205 WT	CE	BW	WW	YW	CEM	MILK	
68	816	+6	+3.1	+67	+116	+12	+26	
CW +57	MARB	+46	RE +50	FAT +0.21	\$W +61.21	\$B +164.95		

- Low birth with tons of performance in this full brother to the proven and extremely popular Musgrave Aviator.
- His dam combines two of the breed's legendary high maternal, proven cow maker sires with SAV Final Answer 0035 and Leachman Right Time stacked in the first two generations of her pedigree and she has earned a progeny record with BW 4@77, BWR 4@97, WWR 4@108, and YWR 3@108.
- Maternal brothers sell in this offering as Lots 14-18 and Lots 37-39 and three-quarter paternal brother sell as Lot 2.



ICC RI Forever Lady 1429-8521

Flush sister to Lot 1. Sells in Denver



ICC RI Forever Lady 1429-8521

Flush sister to Lot 1. Sells in Denver



*Focus
Wyatt DeVries*

Lot 2 - ICC Identity 730-8319



ICC IDENTITY 730-8319

Bull • Reg: +19313843 • BD: 03/04/18 • Tat: 8319



Koupals B&B Identity #

Sitz Upward 307R #
B&B Erica 605 #

Connealy Onward #
Sitz Henrietta Pride 81M
G A R Exaltation 3144 #
B&B Erica 4064

MCATL Forever Lady 730-R02S

Connealy Stimulus 8419 #
ALC Forever Lady R02S

H A Power Alliance 1025 #
Black Creeza of Conanga 5332
Leachman Right Time #
ALC Forever Lady K14P

CE: ★★★★★

- A brother blending the proven high growth traits of Identity with a dam who is a maternal sister to Musgrave Aviator and who has established a progeny record of BW 4@75, BWR 4@98, WWR 4@102, and YWR 1@107.

PERF INFO		EPDs						
BW	205 WT	CED	BW	WW	YW	CEM	MILK	
86	763	+7	+2.4	+67	+120	+11	+27	
CW +57	MARB	+39	RE +.84	FAT -.006	\$W +69.84	\$B	+156.74	



ICC Forever Lady 1429-8519

Flush sister to Lot 2 -

Sold in 2018 Stars of Montana Sale



MCATL Forever Lady 730-R02S

Dam of Lot 2

3/4 Brother to Musgrave Aviator



ICC SA AVIATOR 8316

Bull • Reg: 19267139 • BD: 03/02/18 • Tat: 8316

Musgrave Aviator

Koupals B&B Identity # Sitz Upward 307R #
 B&B Erica 605 #
 MCATL Forever Lady 1429-138 S A V Final Answer 0035 #
 ALC Forever Lady R02S
 Basin Payweight 107S #
 Mill Coulee Pay Raise Mill Coulee Barbara K 905 #
 Sitz Alliance 6595 #
 ICC Everelda Entense 4175 ER Everelda Entense K251
 ICC Everelda Entense 0717

CE: ★★★★★

PERF INFO		EPDs						
BW	205 WT	CE	BW	WW	YW	CEM	MILK	
72	712	+6	-2	+45	+81	+13	+21	
CW +16	MARB	+0.69	RE +0.26	FAT +0.055	\$W +45.08	\$B +99.15		

• This calving ease son of Aviator is from a dam recording BW 3@76, BWR 3@100, WWR 3@102, and YWR 1@109 and his dam is a paternal sister to Pay Raise.



Focus
Wynette DeVries
Lot 7 - ICC SA Aviator 8316



ICC AVIATOR 8297

Bull • Reg: 19267132 • BD: 02/24/18 • Tat: 8297

Musgrave Aviator

Koupals B&B Identity # Sitz Upward 307R #
 B&B Erica 605 #
 MCATL Forever Lady 1429-138 S A V Final Answer 0035 #
 ALC Forever Lady R02S
 Vermilion Payweight J847 #
 Basin Payweight 107S # Basin Lucy 3829
 S A V Final Answer 0035 #
 S A V Abigale 8523 S A V Abigale 6870

CE: ★★★★★

PERF INFO		EPDs						
BW	205 WT	CE	BW	WW	YW	CEM	MILK	
64	779	+11	+4	+70	+115	+14	+17	
CW +54	MARB	+0.57	RE +0.71	FAT +0.044	\$W +68.01	\$B +169.51		

• A heifer bull deluxe in this Aviator son from a dam recording BW 2@64, BWR 1@86, and WWR 1@102.



ICC AVIATOR 8284

Bull • Reg: 19267128 • BD: 02/20/18 • Tat: 8284

Musgrave Aviator

Koupals B&B Identity # Sitz Upward 307R #
 B&B Erica 605 #
 MCATL Forever Lady 1429-138 S A V Final Answer 0035 #
 ALC Forever Lady R02S
 Basin Payweight 107S #
 Mill Coulee Payweight 419 Mill Coulee Barbara K 905 #
 S A V Final Answer 0035 #
 ICC Blackbird 1814 M A R Blackbird 8067 #

CE: ★★★★★

PERF INFO		EPDs						
BW	205 WT	CE	BW	WW	YW	CEM	MILK	
58	709	+11	-1.5	+56	+106	+17	+22	
CW +34	MARB	+0.50	RE +0.51	FAT +0.044	\$W +52.77	\$B +131.19		

• A sure-shot calving ease son of Aviator from a dam recording BW 1@58 and BWR 1@54 and he records the #2 lowest BW EPD in the offering.



ICC AVIATOR 8285

Bull • Reg: 19267129 • BD: 02/20/18 • Tat: 8285

Musgrave Aviator

Koupals B&B Identity # Sitz Upward 307R #
 B&B Erica 605 #
 MCATL Forever Lady 1429-138 S A V Final Answer 0035 #
 ALC Forever Lady R02S
 Basin Payweight 107S #
 Mill Coulee Payweight 419 Mill Coulee Barbara K 905 #
 S A V 8180 Traveler 004
 LCC Erica NG705
 Icc Bon View Erica 7212 #

CE: ★★★★★

PERF INFO		EPDs						
BW	205 WT	CE	BW	WW	YW	CEM	MILK	
66	749	+9	+1.0	+70	+112	+14	+26	
CW +40	MARB	+0.58	RE +0.37	FAT +0.053	\$W +72.23	\$B +143.18		

• Low birth with bred-in performance in this Aviator son from a dam recording BW 1@66, BWR 1@94, and WWR 1@102.



ICC AVIATOR 8271

Bull • Reg: 19267121 • BD: 02/12/18 • Tat: 8271

Musgrave Aviator

Koupals B&B Identity # Sitz Upward 307R #
 B&B Erica 605 #
 MCATL Forever Lady 1429-138 S A V Final Answer 0035 #
 ALC Forever Lady R02S
 Werner War Party 2417 #
 R B Tour Of Duty 177 B A Lady 6807 305
 GDAR Game Day 449 #
 ICC Everelda Entense 6321 ICC Everelda Entense 6215

CE: ★★★★★

PERF INFO		EPDs						
BW	205 WT	CE	BW	WW	YW	CEM	MILK	
76	689	+7	+5	+57	+100	+13	+38	
CW +50	MARB	+0.33	RE +0.72	FAT +0.017	\$W +66.66	\$B +143.57		

• This son of Aviator balances low birth with plenty of performance and is backed by one of the breed's great high maternal cow families.



SALE BROADCAST LIVE

Bid online: www.frontierlivesale.com

For information:

Contact Scott Fraser - 406-860-6548



ICC EPIC 8309 (NHF)

Bull • Reg: 19309365 • BD: 02/27/18 • Tat: 8309



3F Epic 4631

Varilek Product 2010 04

Connealy Final Product #
Varilek Pearl 0006 014
EF Complement 8088 #
EXG Blackcap 6247 PPC

Zebo Queen 1072

S A V Pioneer 7301 #

S A V Final Answer 0035 #
S A V Blackbird 5297
Hyline Right Time 338 #
Miss Wix 415 of Mc Cumber

ICC Miss Wix 3091 #

CE: ★★★★★

PERF INFO			EPDs				
BW	205 WT	CED	BW	WW	YW	CEM	MILK
82	775	+10	+2.0	+76	+135	+16	+24
CW +56	MARB	+35	RE +47	FAT +.009	\$W +72.15	\$B +152.30	

- Here is a bull with tons of EPD spread from double-digit CED to extreme yearling growth and from a dam who never misses recording WWR 4@107.



Focus Wyatt DePries
Lot 12 - ICC Epic 8309



ICC EPIC 8290 (NHF)

Bull • Reg: 19309338 • BD: 02/22/18 • Tat: 8290



3F Epic 4631

Varilek Product 2010 04

Connealy Final Product #
Varilek Pearl 0006 014
EF Complement 8088 #
EXG Blackcap 6247 PPC

Zebo Queen 1072

Connealy Final Product #

Connealy Product 568
Ebonista of Conanga 471 #
G D A R Rainmaker 340 #
Sitz Henrietta Pride 1219

ICC Henrietta Pride 4153

NER ICC Henrietta Pride 1501

CE: ★★★

PERF INFO			EPDs				
BW	205 WT	CED	BW	WW	YW	CEM	MILK
76	707	+5	+4	+51	+92	+9	+20
CW +36	MARB	+53	RE +.07	FAT +.065	\$W +48.52	\$B +112.59	

- This low birthweight son of Epic is from a dam backed by the high maternal Henrietta Pride cow family who records BW 3@75, WWR 2@100, and YWR 1@104.



MCATL Forever Lady 1429-138

Dam of Lot 14-18



ICC EPIC 1429-8260 (NHF)

Bull • Reg: +19166325 • BD: 12/26/17 • Tat: 8260



3F Epic 4631

Varilek Product 2010 04

Connealy Final Product #
Varilek Pearl 0006 014
EF Complement 8088 #
EXG Blackcap 6247 PPC

Zebo Queen 1072

S A V Final Answer 0035 #

Sitz Traveler 8180 #
S A V Emulous 8145
Leachman Right Time #
ALC Forever Lady K14P

MCATL Forever Lady 1429-138

ALC Forever Lady R02S

CE: ★★★★★

PERF INFO			EPDs				
BW	205 WT	CED	BW	WW	YW	CEM	MILK
68	780	+11	-9	+64	+110	+14	+27
CW +39	MARB	+72	RE +.42	FAT +.037	\$W +73.81	\$B +144.43	

- An outstanding maternal brother to Musgrave Aviator and to Lots 1, 37,38, and 39 in this sale. Plus, he is a flush brother to Lots 15-18.
- He is the kind that all cattlemen will appreciate in terms of his phenotype with an EPD profile that is hard to beat and his dam excels with BW 4@77, BWR 4@97, WWR 4@108, and YWR 3@108.



Focus Wyatt DePries
Lot 14 - ICC Epic 1429-8260



ICC EPIC 1429-8258 (NHC)

Bull • Reg: +19192961 • BD: 12/25/17 • Tat: 8258

3F Epic 4631

Varilek Product 2010 04
Zebo Queen 1072

Connealy Final Product #
Varilek Pearl 0006 014
EF Complement 8088 #
EXG Blackcap 6247 PPC
Sitz Traveler 8180 #
S A V Emulous 8145
Leachman Right Time #
ALC Forever Lady K14P

S A V Final Answer 0035 #
ALC Forever Lady R02S

MCATL Forever Lady 1429-138

CE: ★★★★★

PERF INFO				EPDs							
BW	205 WT	CED	BW	WW	YW	CEM	MILK				
66	915	+8	-1.1	+70	+121	+16	+29				
CW	+52	MARB	+56	RE	+56	FAT	+0.034	\$W	+78.46	\$B	+162.81

- A real power house son of Epic in this bull who records the #1 ADJ.205 day weight in the entire offering and is a maternal brother to Musgrave Aviator.
- If you are a commercial cattlemen looking for added pounds and performance at weaning time, here is an opportunity to acquire an NHC bull that will definitely add value.



Focus Wyatt DeVries
Lot 15 - ICC Epic 1429-8258



ICC RI EPIC 1429-887 (NHC)

Bull • Reg: +19166324 • BD: 12/26/17 • Tat: 887

3F Epic 4631

Varilek Product 2010 04
Zebo Queen 1072

Connealy Final Product #
Varilek Pearl 0006 014
EF Complement 8088 #
EXG Blackcap 6247 PPC
Sitz Traveler 8180 #
S A V Emulous 8145
Leachman Right Time #
ALC Forever Lady K14P

S A V Final Answer 0035 #
ALC Forever Lady R02S

MCATL Forever Lady 1429-138

CE: ★★★★★

PERF INFO				EPDs							
BW	205 WT	CED	BW	WW	YW	CEM	MILK				
72	867	+9	+3	+72	+128	+15	+17				
CW	+55	MARB	+73	RE	+52	FAT	+0.039	\$W	+63.66	\$B	+166.91

- This flush brother to Lot 15 records the second highest ADJ. 205 day weight in the offering and offers the same great credentials to commercial cattlemen as his brother who sells as Lot 15.
- His dam's tremendous record is BW 4@77, BWR 4@97, WWR 4@108, and YWR 3@108.



Focus Wyatt DeVries
Lot 16 - ICC RI Epic 1429-887



ICC EPIC 1429-8256 (NHC)

Bull • Reg: +19192959 • BD: 12/21/17 • Tat: 8256

3F Epic 4631

Varilek Product 2010 04
Zebo Queen 1072

Connealy Final Product #
Varilek Pearl 0006 014
EF Complement 8088 #
EXG Blackcap 6247 PPC
Sitz Traveler 8180 #
S A V Emulous 8145
Leachman Right Time #
ALC Forever Lady K14P

S A V Final Answer 0035 #
ALC Forever Lady R02S

MCATL Forever Lady 1429-138

CE: ★★★★★

PERF INFO				EPDs							
BW	205 WT	CED	BW	WW	YW	CEM	MILK				
64	841	+12	-1	+66	+121	+13	+29				
CW	+57	MARB	+71	RE	+55	FAT	+0.056	\$W	+67.93	\$B	+169.00

- This flush brother to Lots 14-18 records one of the top 5 ADJ. 205 day weights in the sale and is also a maternal brother to Musgrave Aviator and to Lots 1, 37, 38, and 39 in this offering.



ICC EPIC 1429-8259 (NHC)

Bull • Reg: +19192962 • BD: 12/26/17 • Tat: 8259

3F Epic 4631

Varilek Product 2010 04
Zebo Queen 1072

Connealy Final Product #
Varilek Pearl 0006 014
EF Complement 8088 #
EXG Blackcap 6247 PPC
Sitz Traveler 8180 #
S A V Emulous 8145
Leachman Right Time #
ALC Forever Lady K14P

S A V Final Answer 0035 #
ALC Forever Lady R02S

MCATL Forever Lady 1429-138

CE: ★★★★★

PERF INFO				EPDs							
BW	205 WT	CED	BW	WW	YW	CEM	MILK				
72	765	+11	-2	+75	+133	+15	+22				
CW	+50	MARB	+34	RE	+61	FAT	+0.034	\$W	+72.74	\$B	+155.48

- Another impressive flush brother blending the high growth traits of Epic with the high maternal dam of Musgrave Aviator in this bull whose full brothers sell as Lots 14, 15, 16, and 17.
- He offers sure-shot calving ease to commercial cattlemen with explosive weaning and yearling growth.



ICC EPIC 8313 (NHF)

Bull • Reg: 19309381 • BD: 03/01/18 • Tat: 8313

3F Epic 4631

Varilek Product 2010 04
Zebo Queen 1072

Connealy Final Product #
Varilek Pearl 0006 014
EF Complement 8088 #
EXG Blackcap 6247 PPC



ICC Queen Elba 0716

Hoover Dam #
NER Queen Elba 9659

SydGen C C & 7 #
Erica of Ellston C124 #
Q A S Traveler 23-4 #
Whitstone Queen Elba F176



CE: ★★

PERF INFO		EPDs						
BW	205 WT	CED	BW	WW	YW	CEM	MILK	
78	729	+2	+1.9	+74	+132	+7	+27	
CW +64	MARB	+6.0	RE +.61	FAT +.013	\$W +70.47	\$B +182.17		

- If you are looking for a bull that will excel the carcass values of your program, this son of Epic records the #1 \$B in the entire offering and he is from a dam recording low birth with BW 5@82 and WWR 5@106.



ICC REG PENDING

Bull • Reg: Pending • BD: 02/19/18 • Tat: 8281

3F Epic 4631

Varilek Product 2010 04
Zebo Queen 1072

Connealy Final Product #
Varilek Pearl 0006 014
EF Complement 8088 #
EXG Blackcap 6247 PPC

ICC Everelda Entense 5235

S Chisum 6175 #
NER Everelda Entense 2453

S Alliance 3313
S Gloria 464 #
Leachman Right Time #
Shadybrook Ever Entense 165H



CE: ★★★★★

PERF INFO		SIRE EPDs						
BW	205 WT	CED	BW	WW	YW	CEM	MILK	
82	706	+12	-1	+88	+155	+15	+25	
DAM EPDs								
CED	BW	WW	YW	CEM	MILK			
+3	+2.1	+53	+85	+12	+22			

- This extreme calving ease, extreme growth son of Epic from a high maternal calving ease daughter of Chisum is backed by the great Everelda Entense cow family.
- His registration is pending waiting the DNA results and his status will be available sale day.



ICC EPIC 8338 (NHF)

Bull • Reg: 19309380 • BD: 03/12/18 • Tat: 8338

3F Epic 4631

Varilek Product 2010 04
Zebo Queen 1072

Connealy Final Product #
Varilek Pearl 0006 014
EF Complement 8088 #
EXG Blackcap 6247 PPC

ICC BonView Gammer 0720

G D A R Traveler 044 #
LCC Bon View Gammer LG853

D H D Traveler 6807 #
G D A R Blackcap Lady 840 #
Rockn D Ambush 1531 #
Bon View Gammer 85



CE: ★★★

PERF INFO		EPDs						
BW	205 WT	CED	BW	WW	YW	CEM	MILK	
88	634	+7	+2.5	+64	+103	+15	+28	
CW +44	MARB	+1.19	RE +.46	FAT +.039	\$W +62.70	\$B +111.82		

- Here is a son of Epic from a dam combining the proven Pathfinder traits of GDAR Traveler 044 with the great Bon View Gammer cow family and backed by a dam recording YWR 2@101.



ICC EPIC 8300 (NHF)

Bull • Reg: 19309388 • BD: 02/25/18 • Tat: 8300

3F Epic 4631

Varilek Product 2010 04
Zebo Queen 1072

Connealy Final Product #
Varilek Pearl 0006 014
EF Complement 8088 #
EXG Blackcap 6247 PPC



Coleman Everelda Entense 933

D H D Traveler 6807 #
Coleman Everelda Entense4107

Q A S Traveler 23-4 #
Bemindful Maid D H D 0807 #
Twin Valley Precision E161 #
Sitz Everelda Entense 4789



CE: ★★★★★

PERF INFO		EPDs						
BW	205 WT	CED	BW	WW	YW	CEM	MILK	
84	611	+13	+2	+59	+112	+16	+18	
CW +44	MARB	+7.5	RE +.53	FAT +.025	\$W +51.22	\$B +150.14		

- If you are in search of a bull to raise top-notch replacement females this son of Epic from a daughter by Traveler 6807 will do just that and offer excellent calving ease without sacrificing performance.
- His dam records BW 8@79 and WWR 7@99.



ICC EPIC L40-8348 (NHF)

Bull • Reg: +19309378 • BD: 03/17/18 • Tat: 8348

3F Epic 4631

Varilek Product 2010 04
Zebo Queen 1072

Connealy Final Product #
Varilek Pearl 0006 014
EF Complement 8088 #
EXG Blackcap 6247 PPC



Erica of Ellston L40

SydGen C C & 7 #
Erica of Ellston C124 #

S A F Connection #
SydGen Forever Lady 4087
TC Gridiron 258 #
Erica of Ellston V65



CE: ★★★

PERF INFO		EPDs						
BW	205 WT	CED	BW	WW	YW	CEM	MILK	
84	736	+4	+8	+65	+120	+7	+29	
CW +51	MARB	+9.1	RE +.57	FAT +.034	\$W +65.80	\$B +162.59		

- Here is a son of Epic that will add carcass values to your program as he records one of the top marbling EPDs in the entire offering and he is a flush brother to Lot 25.
- His dam who is a flush sister to the great AI sire Hoover Dam records BW 2@76 and WWR 2@103.



ICC EPIC 5243-8331 (NHF)

Bull • Reg: +19309305 • BD: 03/09/18 • Tat: 8331

3F Epic 4631

Varilek Product 2010 04
Zebo Queen 1072

Connealy Final Product #
Varilek Pearl 0006 014
EF Complement 8088 #
EXG Blackcap 6247 PPC



ICC Barbara K 5243

Basin Payweight 107S #
Mill Coulee Barbara K 905 #

Vermilion Payweight J847 #
Basin Lucy 3829
S A V Final Answer 0035 #
Mill Coulee Barbara K 414



CE: ★★★★★

PERF INFO		EPDs						
BW	205 WT	CED	BW	WW	YW	CEM	MILK	
78	704	+14	-4	+68	+122	+14	+22	
CW +51	MARB	+6.6	RE +.59	FAT +.062	\$W +61.15	\$B +159.94		

- Sure-shot calving ease in this son of Epic who records the #2 CED EPD in the entire offering and definitely does not sacrifice weaning or yearling performance in this EPD profile.
- His dam is a flush sister to the popular Pay Raise and from one of the breed's great high maternal cow families.



3F Epic 4631

ICC COMMERCIAL (NHC)

Bull • Reg: Commercial • BD: 03/10/18 • Tat: 8332

Varilek Product 2010 04
Zebo Queen 1072
SydGen C C & 7 #
Erica of Ellston C124

Connealy Final Product #
Varilek Pearl 0006 014
EF Complement 8088 #
EXG Blackcap 6247 PPC

S A F Connection #
SydGen Forever Lady 4087
TC Gridiron 258 #
Erica of Ellston V65

Erica of Ellston L40

CE: ★★★★★

PERF INFO		SIRE EPDs					
BW	205 WT	CED	BW	WW	YW	CEM	MILK
76	779	+12	-1	+88	+155	+15	+25
DAM EPDs							
CED	BW	WW	YW	CEM	MILK		
+6	+1.9	+48	+92	+5	+32		

- This NHC son of Epic is produced from a dam who is a flush sister to Hoover Dam recording BW 2@76 and WWR 2@103.
- His flush brother sells as Lot 23.



3F Epic 4631

ICC COMMERCIAL (NHC)

Bull • Reg: Commercial • BD: 03/09/18 • Tat: 8330

Varilek Product 2010 04
Zebo Queen 1072
Basin Payweight 107S #
Mill Coulee Barbara K 905 #

Connealy Final Product #
Varilek Pearl 0006 014
EF Complement 8088 #
EXG Blackcap 6247 PPC

Vermilion Payweight J847 #
Basin Lucy 3829
S A V Final Answer 0035 #
Mill Coulee Barbara K 414

ICC Barbara K 5243

CE: ★★★★★

PERF INFO		SIRE EPDs					
BW	205 WT	CED	BW	WW	YW	CEM	MILK
74	775	+12	-1	+88	+155	+15	+25
DAM EPDs							
CED	BW	WW	YW	CEM	MILK		
+14	-1	+63	+101	+17	+11		

- This NHC Epic son offers low birth with plenty of weaning performance and his dam is a flush sister to the popular and proven Pay Raise.



3F Epic 4631

ICC COMMERCIAL (NHC)

Bull • Reg: Commercial • BD: 02/17/18 • Tat: 8277

Varilek Product 2010 04
Zebo Queen 1072
R B Active Duty 010
Mill Coulee Barbara K 610
Mill Coulee Barbara K 905 #

Connealy Final Product #
Varilek Pearl 0006 014
EF Complement 8088 #
EXG Blackcap 6247 PPC

LCC New Standard #
B A Lady 6807 305
S A V Final Answer 0035 #
Mill Coulee Barbara K 414

Mill Coulee Barbara K 610

CE: ★★★★★

PERF INFO		SIRE EPDs					
BW	205 WT	CED	BW	WW	YW	CEM	MILK
68	744	+12	-1	+88	+155	+15	+25
DAM EPDs							
CED	BW	WW	YW	CEM	MILK		
+10	-2	+80	+141	+14	+21		

- Another high performance NHC son of Epic from a dam recording BW 1@68 and WWR 1@100.
- His dam is a flush sister to ICC Strike Force 2017 who sold as the high selling bull of a past ICC bull sale.



3F Epic 4631

ICC COMMERCIAL (NHC)

Bull • Reg: Commercial • BD: 02/21/18 • Tat: 8288

Varilek Product 2010 04
Zebo Queen 1072
S A V Final Answer 0035 #
Mill Coulee Barbara K 414

Connealy Final Product #
Varilek Pearl 0006 014
EF Complement 8088 #
EXG Blackcap 6247 PPC

Sitz Traveler 8180 #
S A V Emulous 8145
Mill Coulee Legacy 211
Mill Coulee Barbara K 122

Mill Coulee Barbara K 905 #

CE: ★★★★★

PERF INFO		SIRE EPDs					
BW	205 WT	CED	BW	WW	YW	CEM	MILK
68	684	+12	-1	+88	+155	+15	+25
DAM EPDs							
CED	BW	WW	YW	CEM	MILK		
+13	-1.6	+51	+101	+15	+27		

- Expect big-time performance with proven calving ease in this NHC son of Epic whose dam is the great Pathfinder daughter of Final Answer who records BW 4@74, BWR 4@96, WWR 3@111, and YWR 3@106.
- He is a maternal brother to Pay Raise.



3F Epic 4631

ICC COMMERCIAL (NHC)

Bull • Reg: Commercial • BD: 03/13/18 • Tat: 8342

Varilek Product 2010 04
Zebo Queen 1072
S D R Chief Justice 662
NER ICC Henrietta Pride 1501

Connealy Final Product #
Varilek Pearl 0006 014
EF Complement 8088 #
EXG Blackcap 6247 PPC

ER Justice N013 #
ER Everelda Entense P619
G D A R Rainmaker 340 #
Sitz Henrietta Pride 1219

ICC Henrietta Pride 3081

CE: ★★★

PERF INFO		SIRE EPDs					
BW	205 WT	CED	BW	WW	YW	CEM	MILK
78	845	+12	-1	+88	+155	+15	+25
DAM EPDs							
CED	BW	WW	YW	CEM	MILK		
+5	+1.2	+44	+77	+7	+22		

- One Of the heaviest ADJ. 205 day weights in the sale is this son of Epic who is NHC backed by the high maternal Henrietta Pride cow family and a dam recording BW 3@79 with WWR 2@112.

3F EPIC 4631

One of the heaviest used and popular spread bulls in the entire breed has been 3F Epic 4631. This past year he was identified as an NHC and many breeders just like ourselves are working through his progeny who still have tremendous genetic value to the beef industry. These sons of Epic who have tested NHC will work well in a commercial program where progressive cattlemen know the genetics they have utilized throughout the years. ICC would not be offering these bulls to our valued customers if we did not believe they had extreme genetic merit.



ICC COMMERCIAL (NHC)

Bull • Reg: Commercial • BD: 02/15/18 • Tat: 844

3F Epic 4631

Varilek Product 2010 04
Zebo Queen 1072

Connealy Final Product #
Varilek Pearl 0006 014
EF Complement 8088 #
EXG Blackcap 6247 PPC

ICC Pay Raise 4875
ICC Forever Lady 6317
ICC Forever Lady 4176

Mill Coulee Pay Raise
ICC Elsa EVERGREEN 7477
N B C
ICC Forever Lady 1826

CE: ★★★★★

PERF INFO		SIRE EPDs					
BW	205 WT	CED	BW	WW	YW	CEM	MILK
82	855	+12	-.1	+88	+155	+15	+25
DAM EPDs							
CED	BW	WW	YW	CEM	MILK		
+3	+1.1	+59	+101	+10	+31		

- Recording the #3 highest ADJ. 205 day weight in the sale is this son of Epic from an excellent daughter of Pay Raise who records BW 1@82 and WWR 1@117.



ICC COMMERCIAL (NHC)

Bull • Reg: Commercial • BD: 02/23/18 • Tat: 8292

3F Epic 4631

Varilek Product 2010 04
Zebo Queen 1072

Connealy Final Product #
Varilek Pearl 0006 014
EF Complement 8088 #
EXG Blackcap 6247 PPC

Sitz Alliance 6595 #
ICC Everelda Entense 0717
ER Everelda Entense K251

Sitz Traveler 8180 #
Sitz Barbaramere Jet 2698 #
S A F Focus of E R #
Sitz Everelda Entense 023

CE: ★★★

PERF INFO		SIRE EPDs					
BW	205 WT	CED	BW	WW	YW	CEM	MILK
74	731	+12	-.1	+88	+155	+15	+25
DAM EPDs							
CED	BW	WW	YW	CEM	MILK		
+7	+1.2	+30	+59	+13	+23		

- Calving ease deluxe in this Epic son from a high maternal daughter of the great Pathfinder sire Sitz Alliance 6595 who records BW 6@69 and WWR 6@99.
- His dam is also a sister to Chief Justice.



ICC COMMERCIAL (NHC)

Bull • Reg: Commercial • BD: 02/23/18 • Tat: 8293

3F Epic 4631

Varilek Product 2010 04
Zebo Queen 1072

Connealy Final Product #
Varilek Pearl 0006 014
EF Complement 8088 #
EXG Blackcap 6247 PPC

Hoover Dam #
Pcar EX 873 010

SydGen C C & 7 #
Erica of Ellston C124 #
N Bar Explosion C1155
MS Pass Creek Valiant 873

CE: ★★★★★

PERF INFO		SIRE EPDs					
BW	205 WT	CED	BW	WW	YW	CEM	MILK
82	729	+12	-.1	+88	+155	+15	+25
DAM EPDs							
CED	BW	WW	YW	CEM	MILK		
+4	+1.4	+43	+82	+2	+22		

- A blending of extreme growth with high maternal values in this blending of Epic and Hoover Dam from a dam recording WWR 5@100 and YWR 3@102.



ICC COMMERCIAL (NHC)

Bull • Reg: Commercial • BD: 02/20/18 • Tat: 8282

3F Epic 4631

Varilek Product 2010 04
Zebo Queen 1072

Connealy Final Product #
Varilek Pearl 0006 014
EF Complement 8088 #
EXG Blackcap 6247 PPC

Basin Payweight 107S #
ICC Lucy Y145-6365
Coleman Lucy Y145

Vermilion Payweight J847 #
Basin Lucy 3829
S A V Final Answer 0035 #
Coleman Lucy 929

CE: ★★★★★

PERF INFO		SIRE EPDs					
BW	205 WT	CED	BW	WW	YW	CEM	MILK
71	736	+12	-.1	+88	+155	+15	+25
DAM EPDs							
CED	BW	WW	YW	CEM	MILK		
+10	+1.0	+64	+110	+10	+26		

- Expect big-time growth and performance in this Epic/Payweight combination backed by the high maternal Lucy cow family and from a calving ease dam recording BW 1@71.



ICC COMMERCIAL (NHC)

Bull • Reg: Commercial • BD: 02/13/18 • Tat: 8272

3F Epic 4631

Varilek Product 2010 04
Zebo Queen 1072

Connealy Final Product #
Varilek Pearl 0006 014
EF Complement 8088 #
EXG Blackcap 6247 PPC

ICC Pay Raise 4875
ICC Harmony 6343
ICC Harmony 4116

Mill Coulee Pay Raise
ICC Elsa EVERGREEN 7477
Hoover Dam #
ICC Harmony 2973

CE: ★★★★★

PERF INFO		SIRE EPDs					
BW	205 WT	CED	BW	WW	YW	CEM	MILK
62	629	+12	-.1	+88	+155	+15	+25
DAM EPDs							
CED	BW	WW	YW	CEM	MILK		
+11	-.7	+56	+97	+12	+28		

- Generations of proven high maternal ICC dams in the pedigree of this Epic son whose dam is a direct daughter of Pay Raise.



ICC COMMERCIAL (NHC)

Bull • Reg: Commercial • BD: 02/27/18 • Tat: 8305

3F Epic 4631

Varilek Product 2010 04
Zebo Queen 1072

Connealy Final Product #
Varilek Pearl 0006 014
EF Complement 8088 #
EXG Blackcap 6247 PPC

S A V Final Answer 0035 #
Mill Coulee Barbara K 905 #
Mill Coulee Barbara K 414

Sitz Traveler 8180 #
S A V Emulous 8145
Mill Coulee Legacy 211
Mill Coulee Barbara K 122

CE: ★★★

PERF INFO		SIRE EPDs					
BW	205 WT	CED	BW	WW	YW	CEM	MILK
80	733	+12	-.1	+88	+155	+15	+25
DAM EPDs							
CED	BW	WW	YW	CEM	MILK		
+13	-1.6	+51	+101	+15	+27		

- Expect big-time performance with proven calving ease in this NHC son of Epic whose dam is the great Pathfinder daughter of Final Answer who records BW 4@74, BWR 4@96, WWR 3@111, and YWR 3@106.
- He is a maternal brother to Pay Raise.

EVERYONE COULD USE A PAY RAISE

ICC PAY RAISE 4886



Sire of Lots 36-43

CED	BW	WW	YW	RADG	DMI	SC	DOC	CEM	MILK	CW	MARB	RE	FAT	\$W	\$F	\$G	\$B
+4	+2.0	+62	+122	+27	+58	+1.64	+30	+9	+18	+47	+0.4	+43	+0.08	+42.63	+91.59	+2.54	+119.50
70%	65%	25%	10%	20%	80%	10%	3%	45%	85%	25%	95%	60%	45%	70%	10%	95%	50%

zoetis Percent Rank

CED	BW	WW	YW	DMI	YH	SC	DOC	HP	CEM	MK	MW	MH	CW	MB	RE	FAT	TEND
63	73	5	3	75	7	4	44	32	53	58	10	27	14	97	41	34	15



**REF
SIRE**

ICC PAY RAISE 4886

Bull • Reg: 17974692 • BD: 03/30/14 • Tat: 4886

Mill Coulee Pay Raise

Basin Payweight 107S # Vermilion Payweight J847 #
Basin Lucy 3829
Mill Coulee Barbara K 905 # S A V Final Answer 0035 #
Mill Coulee Barbara K 414

ICC Blackbird 0739

Hoover Dam # SydGen C C & 7 #
Erica of Ellston C124 #
M A R Blackbird 8067 # Sitz Traveler 8180 #
Jolly R Blackbird 184A

SEMEN \$25 - CERTIFICATES \$40
Volume Discount Eligible

- ICC Pay Raise 4886 has a huge future in front of him and his first sons sell in this sale. He is one of the most attractive, sound, gentle bulls with growth and thickness we've ever worked with. While he's a superstar on paper, he's even better with his phenotype because he is a model of beef type and functional correctness.
- 4886 was the leadoff and \$22,000 top-selling bull in the 2015 Island Cattle Co. Bull Sale. This remarkable beef bull has the unique combination of traits along with unsurpassed consumption and conversion to make him a breed leader for the next decade. If you want power, stature, eye appeal with moderate birth, this stud blends the best from his two closest sires.
- Dam's Production: 4 BR 96, 4 NR 102, 2 YR 105. She is a very feminine, attractive, moderate, correct donor while the Pathfinder 8180 grandam records 9 BR 96, 9 NR 107, 7 YR 105 and produced in the Island ET program until 17 years of age.



**ICC Lady Pay Raise 6322-8514 -
4886 daughter sells in Denver**



**ICC Barbara K 610-8516 -
4886 daughter sells in Denver**



ICC PAY RAISE 4886-8261

Bull • Reg: +19165562 • BD: 12/28/17 • Tat: 8261



ICC Pay Raise 4886

Mill Coulee Pay Raise

ICC Blackbird 0739

Basin Payweight 1682

ICC Lady Payweight 428-6345

RB Lady Denver 167-428

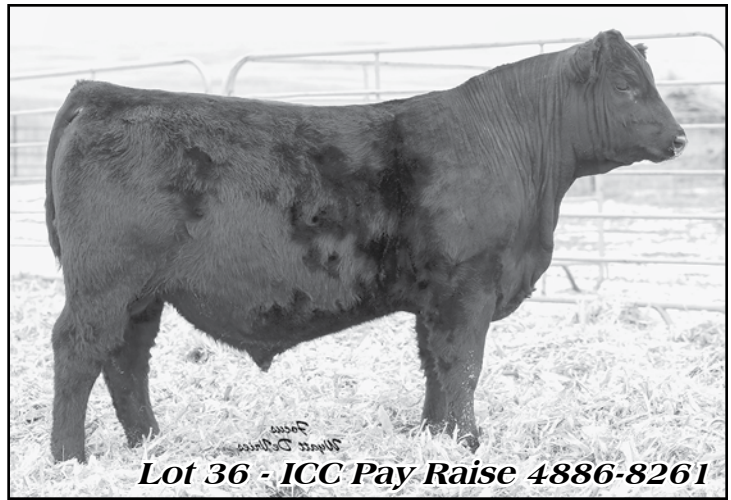
Basin Payweight 107S #
Mill Coulee Barbara K 905 #
Hoover Dam #
M A R Blackbird 8067 #

Basin Payweight 006S #
21AR O Lass 7017
EXAR Denver 2002B
R B Lady Party 167-305

CE: ★

PERF INFO		EPDs						
BW	205 WT	CED	BW	WW	YW	CEM	MILK	
64	719	-1	+3.1	+71	+124	+9	+21	
CW +52	MARB	+24	RE +33	FAT +.024	\$W +59.90	\$B +143.07		

- Calving ease with explosive growth and performance in this Pay Raise son whose dam is a flush sister to a \$200,000 female who sold as an ICC consignment at a National Finals sale in Vegas and she is also a flush sister to the top selling and second top selling bull of a past Midland bull test.



Focus Wyatt DeVries
Lot 36 - ICC Pay Raise 4886-8261



ICC PAY RAISE 4886-8286

Bull • Reg: +19267169 • BD: 02/20/18 • Tat: 8286



ICC Pay Raise 4886

Mill Coulee Pay Raise

ICC Blackbird 0739

S A V Final Answer 0035 #

MCATL Forever Lady 1429-138

ALC Forever Lady R02S

Basin Payweight 107S #
Mill Coulee Barbara K 905 #
Hoover Dam #
M A R Blackbird 8067 #

Sitz Traveler 8180 #
S A V Emulous 8145
Leachman Right Time #
ALC Forever Lady K14P

CE: ★★★

PERF INFO		EPDs						
BW	205 WT	CED	BW	WW	YW	CEM	MILK	
72	697	+6	+1.2	+65	+119	+10	+15	
CW +47	MARB	+43	RE +.46	FAT +.004	\$W +52.96	\$B +144.96		

- An impressive maternal brother to Musgrave Aviator in this Pay Raise son whose maternal brothers sell as Lots 14-18 and 38-39.
- His dam records BW 4@77, BWR 4@97, WWR 4@108, and YWR 3@108.



Focus Wyatt DeVries
Lot 37 - ICC Pay Raise 4886-8286



ICC PAY RAISE 4886-8311

Bull • Reg: +19267170 • BD: 03/01/18 • Tat: 8311



ICC Pay Raise 4886

Mill Coulee Pay Raise

ICC Blackbird 0739

S A V Final Answer 0035 #

MCATL Forever Lady 1429-138

ALC Forever Lady R02S

Basin Payweight 107S #
Mill Coulee Barbara K 905 #
Hoover Dam #
M A R Blackbird 8067 #

Sitz Traveler 8180 #
S A V Emulous 8145
Leachman Right Time #
ALC Forever Lady K14P

CE: ★★★

PERF INFO		EPDs						
BW	205 WT	CED	BW	WW	YW	CEM	MILK	
80	704	+6	+5	+60	+115	+12	+16	
CW +35	MARB	+06	RE +.35	FAT -.002	\$W +44.97	\$B +101.50		

- This flush brother to Lots 37 and 39 is a maternal brother to the great Musgrave Aviator backed by one of the breed's great Final Answer daughters who records BW 4@77, BWR 4@97, WWR 4@108, and YWR 3@108.



MCATL Forever Lady 1429-138

*Dam of
Lots 14-18
and Lots 37-39*

*\$200,000 Vegas Heifer -
Flush sister to Dam of Lot 37
And flush sister to Sire of Lot 83*





ICC RI PAY RAISE 4886-889

Bull • Reg: +19267171 • BD: 02/24/18 • Tat: 889

ICC Pay Raise 4886

Mill Coulee Pay Raise
 Basin Payweight 107S #
 Mill Coulee Barbara K 905 #
 Hoover Dam #
 M A R Blackbird 8067 #

ICC Blackbird 0739

S A V Final Answer 0035 #
 Sitz Traveler 8180 #
 S A V Emulous 8145
 Leachman Right Time #
 ALC Forever Lady R02S
 ALC Forever Lady K14P

MCATL Forever Lady 1429-138

CE: ★★★

PERF INFO		EPDs						
BW	205 WT	CED	BW	WW	YW	CEM	MILK	
84	638	+6	+1.6	+65	+124	+10	+19	
CW +49	MARB	+0.05	RE +.39	FAT -.003	\$W +54.25	\$B +131.20		

- Another impressive Pay Raise son from the flush backed by the same dam as Musgrave Aviator.
- His dam stacks two of the breed's great cow maker sires in her pedigree with Final Answer and Right Time and she has established a record that excels for calving ease with excellent growth traits with BW 4@77, BWR 4@97, WWR 4@108, and YWR 3@108.



ICC PAY RAISE 4886-8339

Bull • Reg: 19267144 • BD: 03/12/18 • Tat: 8339

ICC Pay Raise 4886

Mill Coulee Pay Raise
 Basin Payweight 107S #
 Mill Coulee Barbara K 905 #
 Hoover Dam #
 M A R Blackbird 8067 #

ICC Blackbird 0739

WK Bobcat #
 Connealy Right Answer 746 #
 WK Miss Angus 7127 #
 Diamond Enchantress 101N
 Diamond Ambush 866K
 Diamond Enchantress 424L

ICC Enchantress 3107

CE: ★★

PERF INFO		EPDs						
BW	205 WT	CED	BW	WW	YW	CEM	MILK	
84	721	+7	+3.1	+65	+113	+11	+19	
CW +48	MARB	+0.27	RE +.39	FAT +.018	\$W +47.91	\$B +138.29		

- Here is a Pay Raise son that should sire a top-notch set of replacement females as his dam has earned a record of BW 4@79, WWR 3@102, and YWR 1@107.



ICC PAY RAISE 4886-8287

Bull • Reg: 19267130 • BD: 02/21/18 • Tat: 8287

ICC Pay Raise 4886

Mill Coulee Pay Raise
 Basin Payweight 107S #
 Mill Coulee Barbara K 905 #
 Hoover Dam #
 M A R Blackbird 8067 #

ICC Blackbird 0739

ER Justice N013 #
 ER Falcon K177 #
 JR Henrietta 001L
 G A R Grid Maker #
 G A R Ambush 915

ICC Blackclass 0706

ICC Blackclass 5378

CE: ★★★

PERF INFO		EPDs						
BW	205 WT	CED	BW	WW	YW	CEM	MILK	
70	724	+5	+1.6	+70	+136	+13	+20	
CW +52	MARB	+0.62	RE +.53	FAT +.016	\$W +57.53	\$B +161.26		

- Low birth with added weaning and yearling performance in this Pay Raise son who also excels for end product value.
- His dam by Justice records BW 6@71, BWR 6@94, and YWR 2@104.



ICC RI PAY RAISE 4886-888

Bull • Reg: 19267167 • BD: 02/15/18 • Tat: 888

ICC Pay Raise 4886

Mill Coulee Pay Raise
 Basin Payweight 107S #
 Mill Coulee Barbara K 905 #
 Hoover Dam #
 M A R Blackbird 8067 #

ICC Blackbird 0739

Connealy Capitalist 028 #
 S A V Final Answer 0035 #
 Prides Pita of Conanga 8821
 GDAR Game Day 449 #
 ICC Reece's Flossie 305
 ICC Reece's Flossie 8542

ICC RI Flossie 642

CE: ★★★

PERF INFO		EPDs						
BW	205 WT	CED	BW	WW	YW	CEM	MILK	
70	653	+5	+2.1	+62	+115	+5	+23	
CW +54	MARB	+0.27	RE +.55	FAT +.042	\$W +57.78	\$B +129.13		

- This son of Pay Raise is backed by a high maternal calving ease daughter of Connealy Capitalist who records BW 1@70 and BWR 1@99.



ICC PAY RAISE 4886-8340

Bull • Reg: 19267145 • BD: 03/13/18 • Tat: 8340

ICC Pay Raise 4886

Mill Coulee Pay Raise
 Basin Payweight 107S #
 Mill Coulee Barbara K 905 #
 Hoover Dam #
 M A R Blackbird 8067 #

ICC Blackbird 0739

S Chisum 6175 #
 S Alliance 3313
 S Gloria 464 #
 Sitz Alliance 6595 #
 ICC Miss Wix 4618
 Miss Wix 415 of Mc Cumber

ICC Miss Wix 3058

CE: ★

PERF INFO		EPDs						
BW	205 WT	CED	BW	WW	YW	CEM	MILK	
82	686	+1	+3.2	+54	+101	+12	+24	
CW +50	MARB	+0.32	RE +.35	FAT +.052	\$W +42.80	\$B +141.49		

- This son of Pay Raise is backed by a productive high maternal daughter of Chisum tracing to a dam by Sitz Alliance 6595 plus his dam records BW 3@75 with BWR 3@99.

A Customer's Testimonial about 4886

Glen,
 Good hearing from you today. I wanted to let you know how pleased we were with the total performance the Payraise bull did on our first calf heifers and cowherd for the fall of 2017. First, we had no calving problems with his progeny. They weren't necessarily light but shaped so nice. Second, they really grew exceptionally well, with several bulls weighing over #800. His progeny was our largest sire group and lead all groups with an average weaning index of 103 and yearling at 102.
 I really like the phenotype on his progeny with the extra muscle he produces. Also his DNA profile on his progeny shows that extra growth that our bull customers like.
 We are anxious to see how well they like them.

Best wishes for the New Year and good luck with your bull sale
 Shawn Booth
 Booth's Cherry Creek Ranch



ICC PAY RAISE 4885-8276

Bull • Reg: 19267125 • BD: 02/16/18 • Tat: 8276

ICC Pay Raise 4885

Mill Coulee Pay Raise
ER Lass N080

Basin Payweight 107S #
Mill Coulee Barbara K 905 #
S A F Focus of E R #
ER Baldrige Lass L220



ICC Everelda Entense 6390

RB Riley 890-2181
ICC Everelda Entense 8526

G A R Objective 7125 #
R B Lady Standard 305-890
Sitz Alliance 6595 #
ER Everleda Entense K251

CE: ★★★

PERF INFO		EPDs						
BW	205 WT	CED	BW	WW	YW	CEM	MILK	
70	713	+7	+1.7	+63	+104	+10	+27	
CW +49	MARB	+4.6	RE +.64	FAT -.006	\$W +69.20	\$B +151.94		

- A Pay Raise son from a low birth, calving ease daughter of RB Riley ultimately blending the high income producing Lady and Everelda Entense cow families in the bottom side of this pedigree. In addition, his dam records BW 1@70 with BWR 1@99.



ICC PAY RAISE 4885-8291

Bull • Reg: 19280073 • BD: 02/23/18 • Tat: 8291

ICC Pay Raise 4885

Mill Coulee Pay Raise
ER Lass N080

Basin Payweight 107S #
Mill Coulee Barbara K 905 #
S A F Focus of E R #
ER Baldrige Lass L220

ICC Enchanter 6339

RB Riley 890-2181
PF Miss EXT of 512 9829

G A R Objective 7125 #
R B Lady Standard 305-890
N Bar Emulation EXT #
Jauer 6807 Traveler 512 29

CE: ★★★

PERF INFO		EPDs						
BW	205 WT	CED	BW	WW	YW	CEM	MILK	
72	805	+5	+1.4	+65	+112	+11	+24	
CW +62	MARB	+1.8	RE +.88	FAT +.009	\$W +62.84	\$B +170.14		

- This Pay Raise son records the third highest \$B value in the entire offering and is from a low birth dam recording BW 1@72 plus she weaned this bull off with a weaning ratio of 108.



ICC PAY RAISE 4885-8278

Bull • Reg: 19267126 • BD: 02/17/18 • Tat: 8278

ICC Pay Raise 4885

Mill Coulee Pay Raise
ER Lass N080

Basin Payweight 107S #
Mill Coulee Barbara K 905 #
S A F Focus of E R #
ER Baldrige Lass L220

ICC Erica 6310

TR Mr Aberdeen 1068Y
ICC Erica 4173

TC Aberdeen 759 #
TR Ms Erica 8035U
Gmar End Product Z017
ICC Erica 0703

CE: ★★★

PERF INFO		EPDs						
BW	205 WT	CED	BW	WW	YW	CEM	MILK	
68	704	+11	-.7	+49	+81	+9	+26	
CW +31	MARB	+3.8	RE +.73	FAT +.031	\$W +55.89	\$B +130.47		

- This three-quarter brother to Lot 46 combines the proven performance of Pay Raise with a dam who traces to the proven Pathfinder sire TC Aberdeen 759 and she records BW 1@68 with BWR 1@96.



ICC PAY RAISE 4885-8275

Bull • Reg: 19267124 • BD: 02/16/18 • Tat: 8275

ICC Pay Raise 4885

Mill Coulee Pay Raise
ER Lass N080

Basin Payweight 107S #
Mill Coulee Barbara K 905 #
S A F Focus of E R #
ER Baldrige Lass L220

ICC Eisa Erica 6393

TR Mr Aberdeen 1068Y
ICC Eisa Erica 3019

TC Aberdeen 759 #
TR Ms Erica 8035U
Werner War Party 2417 #
MS Pcar Marriott 4039 7152

CE: ★★

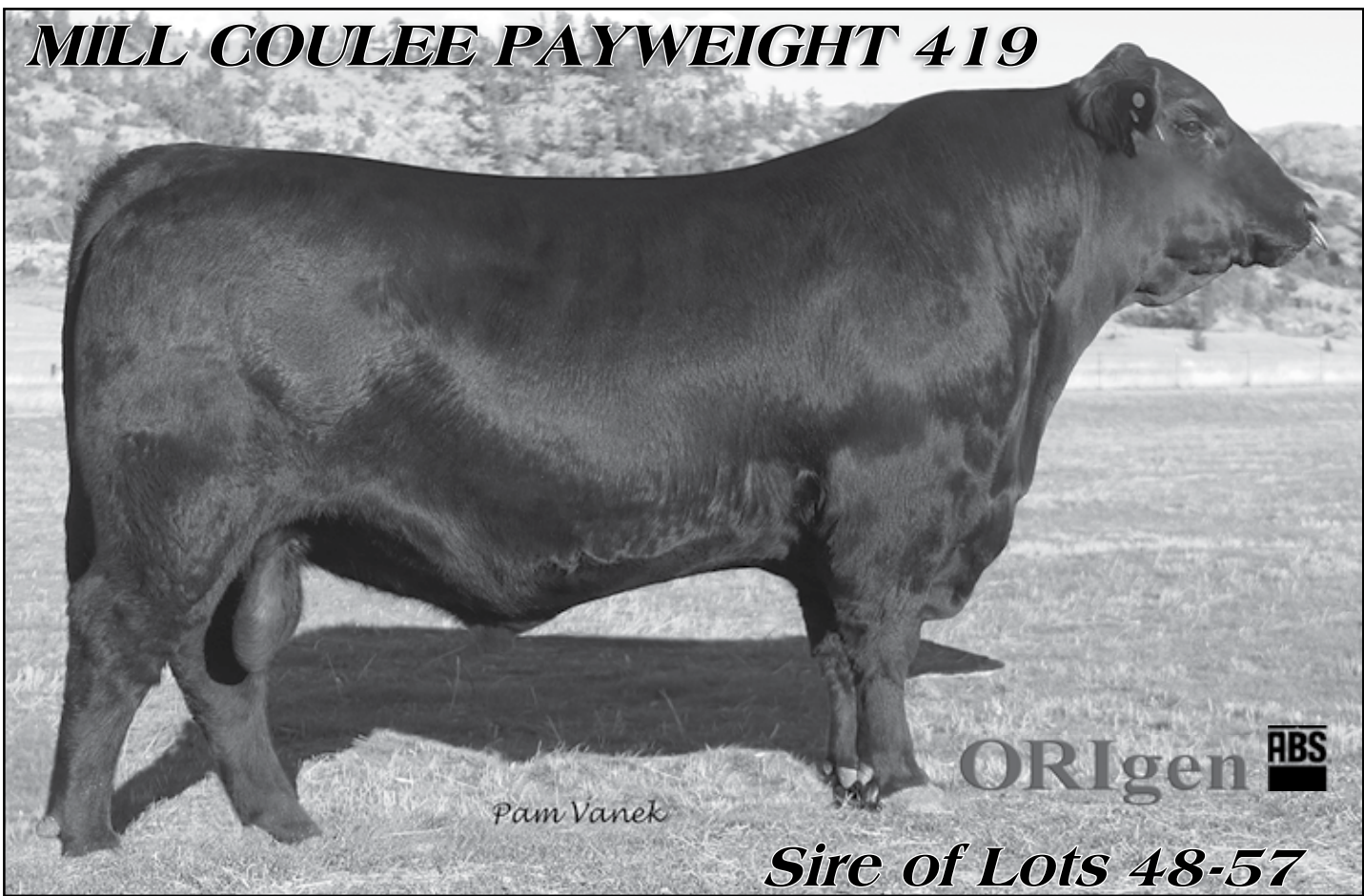
PERF INFO		EPDs						
BW	205 WT	CED	BW	WW	YW	CEM	MILK	
68	724	-2	+1.9	+59	+99	-6	+21	
CW +45	MARB	+1.16	RE +.84	FAT -.005	\$W +57.72	\$B +146.05		

- Here is a bull that should transmit plenty of low birth traits to his progeny with bred-in maternal excellence as he stacks some of the breed's top Pathfinder sires in his pedigree and his dam records BW 1@68 with BWR 1@96.



EPDs						
CED	BW	WW	YW	SC	CEM	MILK
+12	-1.8	+54	+95	+1.08	+9	+18
CW +43	MARB	+1.13	RE +.77	FAT +.001	\$W +50.48	\$B +141.49

MILL COULEE PAYWEIGHT 419



Pam Vanek

ORigen 

Sire of Lots 48-57

CE	BW	WW	YW	RADG	DMI	SC	DOC	CEM	MILK	CW	MARB	RE	FAT	\$W	\$F	\$G	\$B
+5	+2.5	+76	+134	+35	-.12	+1.71	+29	+13	+22	+55	+20	+90	+008	+62.53	+117.02	+22.22	+158.85
60%	75%	2%	2%	2%	25%	5%	4%	10%	60%	10%	85%	3%	45%	20%	1%	80%	10%



zoetis Percent Rank

CE	BW	WW	YW	DMI	YH	SC	DOC	HP	CEM	MK	MW	MH	CW	MB	RE	FAT	TEND
61	79	11	25	8	7	9	54	71	1	33	1	2	21	76	18	35	78



MILL COULEE PAYWEIGHT 419

Bull • Reg: +17994830 • BD: 02/08/14 • Tat: 419

Basin Payweight 107S #

Vermilion Payweight J847 #
Basin Lucy 3829

Mill Coulee Barbara K 905 #

S A V Final Answer 0035 #
Mill Coulee Barbara K 414

**SEMEN \$20 - CERTIFICATES \$35
Volume Discount Eligible**

Vermilion Dateline 7078 #
Vermilion Lass 7969
C A Future Direction 5321 #
Basin Lucy 178E
Sitz Traveler 8180 #
S A V Emulous 8145
Mill Coulee Legacy 211
Mill Coulee Barbara K 122



*ICC Barbara K 4118 -
High selling 1/2 interest
heifer, sold in the 2015
Stars of MT Sale
to Linz Heritage Angus
and Sharpe Ranch*

- There's no doubt that the Payweight line of cattle excels for growth and carcass weight in the Angus data base. The 107S advantage also includes docility, scrotal, ribeye and length of body as some of the greatest contributions to the Angus breed.
- Mill Coulee Payweight 419 is long...really long bodied and is a full brother to the deceased high growth sire, Mill Coulee Pay Raise, the \$50,000 ICC Payloader and \$47,000, \$21,000 and \$10,000 full brothers at Diamond Dot. 419 has 32 progeny on record earning an average weaning weight ratio of 103. He is backing up his strong genomic profile with his progeny performance resume.
- Dam's production: 3 BR 96, 3 NR 111, 3 YR 106 - Pathfinder. Calving interval: 3@346 days. She is destined for name brand status among elite Angus donors.
- When you analyze all of 419's excellent performance data what stands out the most is his genomic performance/feed intake relationship. With top 2% scores for WW and YW it's absolutely amazing that he ranks in the top 25% for Dry Matter Intake. He consumes and eats less proving he can be labeled the bull who does more with less. That's true feed conversion.



ICC PAYWEIGHT 419-8307

Bull • Reg: +19267175 • BD: 02/27/18 • Tat: 8307

Mill Coulee Payweight 419

Basin Payweight 107S #
Mill Coulee Barbara K 905 #

Vermilion Payweight J847 #
Basin Lucy 3829
S A V Final Answer 0035 #
Mill Coulee Barbara K 414

ICC Blackbird 0739

Hoover Dam #
M A R Blackbird 8067 #

SydGen C C & 7 #
Erica of Ellston C124 #
Sitz Traveler 8180 #
Jolly R Blackbird 184A

CE: ★★★★★

PERF INFO			EPDs					
BW	205 WT	CED	BW	WW	YW	CEM	MILK	
76	691	+13	-1.1	+50	+91	+11	+32	
CW +42	MARB	+2.2	RE +.72	FAT +.061	\$W +64.80	\$B +122.43		

- A tremendous herd sire prospect in this son of Mill Coulee Payweight 419 from an outstanding daughter of Hoover Dam who records BW 5@70, BWR 4@96, WWR 4@102, and YWR 2@105.
- He is a maternal brother to ICC Pay Raise 4886 and a flush brother to Lots 49 and 50 and Lots 58 and 60.



Lot 48 - ICC Payweight 419-8307



ICC PAYWEIGHT 419-8318

Bull • Reg: +19267177 • BD: 03/04/18 • Tat: 8318

Mill Coulee Payweight 419

Basin Payweight 107S #
Mill Coulee Barbara K 905 #

Vermilion Payweight J847 #
Basin Lucy 3829
S A V Final Answer 0035 #
Mill Coulee Barbara K 414

ICC Blackbird 0739

Hoover Dam #
M A R Blackbird 8067 #

SydGen C C & 7 #
Erica of Ellston C124 #
Sitz Traveler 8180 #
Jolly R Blackbird 184A

CE: ★★

PERF INFO			EPDs					
BW	205 WT	CED	BW	WW	YW	CEM	MILK	
84	702	+4	+3.0	+73	+129	+7	+26	
CW +54	MARB	+4.7	RE +.50	FAT +.038	\$W +63.94	\$B +152.48		

- This flush brother to Lot 48 is produced from a dam with an excellent record of BW 5@70, BWR 4@96, WWR 4@102, and YWR 2@105.
- This set of flush brothers will add pounds of performance to their progeny and their daughters should be top replacements.



ICC Pay Raise 4886

Full brother in blood to Lots 48-50



ICC PAYWEIGHT 419-8306

Bull • Reg: +19267176 • BD: 02/27/18 • Tat: 8306

Mill Coulee Payweight 419

Basin Payweight 107S #
Mill Coulee Barbara K 905 #

Vermilion Payweight J847 #
Basin Lucy 3829
S A V Final Answer 0035 #
Mill Coulee Barbara K 414

ICC Blackbird 0739

Hoover Dam #
M A R Blackbird 8067 #

SydGen C C & 7 #
Erica of Ellston C124 #
Sitz Traveler 8180 #
Jolly R Blackbird 184A

CE: ★★

PERF INFO			EPDs					
BW	205 WT	CED	BW	WW	YW	CEM	MILK	
70	735	+3	+2.3	+66	+113	+10	+26	
CW +43	MARB	+3.7	RE +.58	FAT +.030	\$W +62.79	\$B +138.40		

- This flush brother to Lots 48 and 49 is also a maternal brother to ICC Pay Raise 4886 as he is produced from the high maternal dam by Hoover dam who records BW 5@70, BWR 4@96, WWR 4@102, and YWR 2@105.
- Genomic scores available sale day.



ICC PAYWEIGHT 419-8344

Bull • Reg: 19267155 • BD: 03/14/18 • Tat: 8344

Mill Coulee Payweight 419

Basin Payweight 107S #
Mill Coulee Barbara K 905 #

Vermilion Payweight J847 #
Basin Lucy 3829
S A V Final Answer 0035 #
Mill Coulee Barbara K 414

ICC Emblynette 5213

N B C
ICC Emblynette 3057

S A V Final Answer 0035 #
Diamond Lucy 75U2
Diamond Timeless 6X82
ICC Emblynette 9619

CE: ★★

PERF INFO			EPDs					
BW	205 WT	CED	BW	WW	YW	CEM	MILK	
86	745	+1	+1.7	+77	+123	+5	+20	
CW +47	MARB	+1.5	RE +.48	FAT +.018	\$W +71.07	\$B +137.36		

- Low birth with impressive weaning and yearling growth in his EPD profile in this Payweight 419 son whose dam records BW 2@80 and WWR 1@102.



ICC PAYWEIGHT 419-8349

Bull • Reg: 19267153 • BD: 03/17/18 • Tat: 8349

Mill Coulee Payweight 419

Basin Payweight 107S #
Mill Coulee Barbara K 905 #

Vermilion Payweight J847 #
Basin Lucy 3829
S A V Final Answer 0035 #
Mill Coulee Barbara K 414

Werner War Party 2417 #

Connealy Onward #
BAAR USA Lady Jaye 489
G A R Grid Maker #
Ner Erica 9355

ICC Erica 4119

ICC Erica 8513

CE: ★★★★★

PERF INFO		EPDs						
BW	205 WT	CED	BW	WW	YW	CEM	MILK	
68	770	+8	+4	+61	+97	+14	+24	
CW +39	MARB	+1.7	RE +.95	FAT -.001	\$W +61.34	\$B +120.07		

- This Payweight 419 son is backed by a dam who stacks the high growth traits of War Party and Grid Maker with the high maternal Erica cow family and his dam has a phenomenal progeny record recording BW 3@70, BWR 3@92, WWR 3@111, and YWR 1@105.



ICC RI PAYWEIGHT 419-893

Bull • Reg: 19267168 • BD: 03/08/18 • Tat: 893

Mill Coulee Payweight 419

Basin Payweight 107S #
Mill Coulee Barbara K 905 #

Vermilion Payweight J847 #
Basin Lucy 3829
S A V Final Answer 0035 #
Mill Coulee Barbara K 414

S A V Final Answer 0035 #

Sitz Traveler 8180 #
S A V Emulous 8145
Mill Coulee Legacy 211
Mill Coulee Barbara K 122

ICC Reece's Barbara K 409

Mill Coulee Barbara K 414

CE: ★★★★★

PERF INFO		EPDs						
BW	205 WT	CED	BW	WW	YW	CEM	MILK	
72	723	+6	-.4	+54	+94	+13	+22	
CW +33	MARB	+2.8	RE +.57	FAT +.012	\$W +52.12	\$B +123.18		

- Here is a Payweight 419 son that offers plenty of calving ease as his dam records BW 3@67, BWR 3@92, WWR 3@100, and YWR 1@100.
- His dam is also a flush sister to the great Pathfinder dam Mill Coulee Barbara K905 who is the dam of Mill Coulee Pay Raise.



ICC PAYWEIGHT 419-8295

Bull • Reg: +19267174 • BD: 02/23/18 • Tat: 8295

Mill Coulee Payweight 419

Basin Payweight 107S #
Mill Coulee Barbara K 905 #

Vermilion Payweight J847 #
Basin Lucy 3829
S A V Final Answer 0035 #
Mill Coulee Barbara K 414

S A V Final Answer 0035 #

Sitz Traveler 8180 #
S A V Emulous 8145
Connealy Frontline #
Bon View Erica 443 #

ICC Bon View Erica 9618

LCC Erica NG705

CE: ★★★★★

PERF INFO		EPDs						
BW	205 WT	CED	BW	WW	YW	CEM	MILK	
74	713	+10	+0	+63	+117	+13	+26	
CW +41	MARB	+1.0	RE +.34	FAT +.014	\$W +58.07	\$B +130.52		

- This three-quarter brother to Lot 53 offers double-digit CED with plenty of weaning and yearling performance and his dam records extreme calving ease with BW 5@79 and explosive weaning performance with WWR 5@112.
- A flush brother is now working in the Schillinger Angus program.



ICC PAYWEIGHT 419-8334

Bull • Reg: 19267158 • BD: 03/10/18 • Tat: 8334

Mill Coulee Payweight 419

Basin Payweight 107S #
Mill Coulee Barbara K 905 #

Vermilion Payweight J847 #
Basin Lucy 3829
S A V Final Answer 0035 #
Mill Coulee Barbara K 414

Connealy Final Product #

Connealy Product 568
Ebonista of Conanga 471 #
S A V Pioneer 7301 #
ICC Queen Kimberly 5265

ICC Queen Kimberly 4117

ICC Queen Kimberly 0749

CE: ★★

PERF INFO		EPDs						
BW	205 WT	CED	BW	WW	YW	CEM	MILK	
84	708	+5	+3.2	+60	+105	+9	+27	
CW +33	MARB	+3.3	RE +.49	FAT +.024	\$W +50.00	\$B +119.59		

- Here is a son of Payweight 419 who will add pounds at weaning time and a set of replacement females that any progressive cattleman will appreciate as his dam records WWR 3@104 and YWR 1@106.



ICC PAYWEIGHT 8356

Bull • Reg: 19267150 • BD: 04/03/18 • Tat: 8356

Mill Coulee Payweight 419

Basin Payweight 107S #
Mill Coulee Barbara K 905 #

Vermilion Payweight J847 #
Basin Lucy 3829
S A V Final Answer 0035 #
Mill Coulee Barbara K 414

Hoover Dam #

SydGen C C & 7 #
Erica of Ellston C124 #
Sitz Alliance 6595 #
ER Everelda Entense K251

ICC Everelda Entense 3024

ICC Everelda Entense 8530

CE: ★★

PERF INFO		EPDs						
BW	205 WT	CED	BW	WW	YW	CEM	MILK	
88	737	+1	+1.9	+56	+102	+8	+25	
CW +50	MARB	+3.4	RE +.53	FAT +.001	\$W +52.54	\$B +150.69		

- A blending of the growth and performance of Payweight 419 with the high maternal traits of Hoover Dam and the high maternal Everelda Entense cow family in this low birthweight bull whose dam records BW 4@77.



ICC PAYWEIGHT 419-8351

Bull • Reg: 19267152 • BD: 03/21/18 • Tat: 8351

Mill Coulee Payweight 419

Basin Payweight 107S #
Mill Coulee Barbara K 905 #

Vermilion Payweight J847 #
Basin Lucy 3829
S A V Final Answer 0035 #
Mill Coulee Barbara K 414

Hoover Dam #

SydGen C C & 7 #
Erica of Ellston C124 #
S A Neutron 377 #
Scottish V047

ICC Erica 4165

Erica of Ellston X16

CE: ★★

PERF INFO		EPDs						
BW	205 WT	CED	BW	WW	YW	CEM	MILK	
80	736	+5	+2.5	+59	+102	+11	+22	
CW +36	MARB	+4.8	RE +.79	FAT +.031	\$W +50.23	\$B +135.27		

- This three-quarter brother to Lot 56 is from a dam with a record of BW 2@73, BWR 2@98, and WWR 2@100.



ICC PAYLOADER 8341

Bull • Reg: 19267146 • BD: 03/13/18 • Tat: 8341

ICC Payloader

Basin Payweight 107S #	Vermilion Payweight J847 #
Mill Coulee Barbara K 905 #	Basin Lucy 3829
	S A V Final Answer 0035 #
	Mill Coulee Barbara K 414
Hoover Dam #	SydGen C C & 7 #
	Erica of Ellston C124 #
M A R Blackbird 8067 #	Sitz Traveler 8180 #
	Jolly R Blackbird 184A

ICC Blackbird 0751

CE: ★★

PERF INFO		EPDs						
BW	205 WT	CED	BW	WW	YW	CEM	MILK	
76	740	+4	+1.1	+66	+111	+9	+27	
CW +53	MARB	+5.8	RE +.86	FAT -.016	\$W +70.70	\$B +164.97		

- Here is a bull that will be a cattleman's favorite on sale day and he is a full brother in blood to Lots 48-50 and 59-60.
- His dam has a record of BW 7@73, BWR 7@95, WWR 7@102, and YWR 2@100 and she is a flush sister to the dam of ICC Pay Raise 4886 which in turn makes this bull a full sibling in blood to Pay Raise.



ICC PAYLOADER 0739-8298

Bull • Reg: +19267173 • BD: 02/24/18 • Tat: 8298

ICC Payloader

Basin Payweight 107S #	Vermilion Payweight J847 #
Mill Coulee Barbara K 905 #	Basin Lucy 3829
	S A V Final Answer 0035 #
	Mill Coulee Barbara K 414
Hoover Dam #	SydGen C C & 7 #
	Erica of Ellston C124 #
M A R Blackbird 8067 #	Sitz Traveler 8180 #
	Jolly R Blackbird 184A

ICC Blackbird 0739

CE: ★★ ★★

PERF INFO		EPDs						
BW	205 WT	CED	BW	WW	YW	CEM	MILK	
68	682	+8	+4	+49	+90	+14	+32	
CW +38	MARB	+4.2	RE +.75	FAT -.010	\$W +53.31	\$B +122.53		

- Calving ease with strong performance traits stacked in the pedigree of this Payloader son whose dam records BW 5@70, BWR 4@96, WWR 4@102, and YWR 2@105.
- He is a maternal brother to ICC Pay Raise 4886 and a flush brother to Lot 60.



ICC PAYLOADER 8303

Bull • Reg: 19267135 • BD: 02/26/18 • Tat: 8303

ICC Payloader

Basin Payweight 107S #	Vermilion Payweight J847 #
Mill Coulee Barbara K 905 #	Basin Lucy 3829
	S A V Final Answer 0035 #
	Mill Coulee Barbara K 414
Bon View New Design 878 #	B/R New Design 036 #
	Bon View Gammer 85
M A R Blackbird 8067 #	Sitz Traveler 8180 #
	Jolly R Blackbird 184A

ICC Blackbird 1895

CE: ★★

PERF INFO		EPDs						
BW	205 WT	CED	BW	WW	YW	CEM	MILK	
80	699	+5	+2.2	+56	+101	+13	+20	
CW +46	MARB	+5.4	RE +.41	FAT +.042	\$W +41.46	\$B +140.98		

- A blending of ICC Payloader with a top performing daughter of New Design 878 in this bull whose dam records a low birth ratio of BW 5@70 with BWR 5@93 and YWR 2@101.



ICC PAYLOADER 0739-8294

Bull • Reg: +19267172 • BD: 02/23/18 • Tat: 8294

ICC Payloader

Basin Payweight 107S #	Vermilion Payweight J847 #
Mill Coulee Barbara K 905 #	Basin Lucy 3829
	S A V Final Answer 0035 #
	Mill Coulee Barbara K 414
Hoover Dam #	SydGen C C & 7 #
	Erica of Ellston C124 #
M A R Blackbird 8067 #	Sitz Traveler 8180 #
	Jolly R Blackbird 184A

ICC Blackbird 0739

CE: ★★ ★★

PERF INFO		EPDs						
BW	205 WT	CED	BW	WW	YW	CEM	MILK	
64	668	+6	+6	+51	+88	+9	+32	
CW +31	MARB	+3.7	RE +.53	FAT +.042	\$W +62.05	\$B +101.29		

- This maternal brother to ICC Pay Raise 4886 is produced from a dam by Hoover Dam who excels in her progeny record with BW 5@70, BWR 4@96, WWR 4@102, and YWR 2@105.
- Flush brother to Lot 59.



EPDs						
CED	BW	WW	YW	SC	CEM	MILK
+9	+4	+63	+116	+1.21	+16	+27
CW +53	MARB	+7.0	RE +.80	FAT +.011	\$W +61.41	\$B +163.86



ICC PAY RAISE 5941-8333



Bull • Reg: 19267159 • BD: 03/10/18 • Tat: 8333

ICC Pay Raise 5941

Basin Payweight 107S #	Vermilion Payweight J847 #
Mill Coulee Barbara K 905 #	Basin Lucy 3829
	S A V Final Answer 0035 #
	Mill Coulee Barbara K 414

ICC Eisa Erica 9594

HARB Pendleton 765 J H #	S A V Final Answer 0035 #
MS Pcar Marriott 4039 7152	H A R B Black Lady 375 J H #
	Pass Creek Marriott 4039
	Miss Pass Creek Traveler 012

CE: ★★★★★

PERF INFO		EPDs						
BW	205 WT	CED	BW	WW	YW	CEM	MILK	
72	696	+14	-1.2	+59	+102	+14	+30	
CW +52	MARB	+23	RE +42	FAT +.008	\$W +69.79	\$B +129.34		

- This son of Pay Raise records the second highest CED EPD in the entire offering and will make an excellent bull to use on a set of replacement heifers.
- His low birth dam records BW 4@73 with BWR 4@94.
- He is a flush brother to ICC Pay Raise.



ORigen
Mill Coulee Pay Raise

Flush brother of Lot 62

Top Dollar Angus Feeder Calf Program

All bulls in this sale offering that qualify for The Top Dollar Angus Program will have this logo between the sire and dam in the pedigree.



Top Dollar Angus is a genetic-certification and marketing company focused exclusively on the top 25 percent of the industry in carcass and growth Angus and Red Angus-influenced feeder cattle. Top Dollar Angus is a program similar to other popular branded-beef programs, except that Top Dollar Angus does its branding in the feeder cattle and calf market.

Qualified herds must have two or more generations of Angus (Black or Red) genetics with growth and carcass traits objectively ranking in the top 25 percent of the breed based on documented historical sire use. DNA evaluation conducted by Zoetis or GeneSeek is another workable method to qualify. Once your cattle have met the necessary requirements, they will be marketed under the Top Dollar Angus brand and logo, and will be promoted aggressively to a large number of feed yards and buyers. In today's market, Top Dollar Angus cattle are seeing premiums ranging from \$30 to \$70 per head above the average market.

Why the premium? Cattle feeders know that Top Dollar Angus cattle perform better and have higher grid-based carcass rewards compared to other cattle. This puts more dollars per head into the cattle feeder's pocket, which can be passed back to the producer in the form of premiums paid above market price.

Top Dollar Angus helps take the guess work and surprises out of growing and feeding cattle. Feed yards are tired of unpredictable performance and wide-ranging profitability results from group to group on cattle they purchase. Cattle often look the same and have the same colored hides, but are very different genetically. That's why the genetic certification of high-end Angus and Red Angus feeder cattle is here! The industry must differentiate the best Angus and Red Angus genetics from average cattle, and that's what Top Dollar Angus will do for you!

If you have consistently invested in high-performance Angus or Red Angus genetics, Top Dollar Angus will make your cattle stand out from the pack and get you the premiums you deserve. No matter how you market your cattle, our goal is to create more demand and higher prices for your calves.



Jared Wareham, general manager
jared@topdollarangus.com
660-492-2777
www.topdollarangus.com

ICC MCF STRIKE FORCE



Sire of Lots 48-57

CED	BW	WW	YW	RADG	DMI	SC	DOC	CEM	MILK	CW	MARB	RE	FAT	\$W	\$F	\$G	\$B
+4	+3.6	+83	+146	+37	+30	+1.46	+23	+13	+20	+63	+05	+84	-.035	+65.22	+129.13	+15.37	+160.58
70%	95%	1%	1%	1%	55%	15%	20%	10%	75%	4%	95%	10%	5%	15%	1%	95%	10%



zoetis Percent Rank

CED	BW	WW	YW	DMI	YH	SC	DOC	HP	CEM	MK	MW	MH	CW	MB	RE	FAT	TEND
79	94	2	2	39	27	21	35	21	42	78	8	19	8	79	11	4	78



ICC MCF STRIKE FORCE

Bull • Reg: +18584463 • BD: 01/21/16 • Tat: 610

R B Active Duty 010

LCC New Standard #
B A Lady 6807 305

Mill Coulee Barbara K 905 #

S A V Final Answer 0035 #
Mill Coulee Barbara K 414

Bon View New Design 1407 #
LCC Sunset K3118
Vermilion Dateline 7078 #
G D Lady Hi Flyer 302
Sitz Traveler 8180 #
S A V Emulous 8145
Mill Coulee Legacy 211
Mill Coulee Barbara K 122



**Mill Coulee Barbara K 610 -
Flush sister to Strike Force**

- The \$15,000 top selling bull in the 2017 Idland Bull Sale who is a deep sided, attractive tank. He is a maternal kind of herd bull that builds cowherds.
- Individual performance: BW 90 lbs., 205 wt. 748 lbs., 365 1394 lbs. (ET). He posted a 4.05 ADG on test with adj. yearling scrotal measurement: 41 cm.
- Dam's production: 3 BR 96, 3 NR 111, 3 YR 106 - Pathfinder. She is currently the most influential donor in the ICC program.
- Maternal brothers include: Mill Coulee Pay Raise, ICC Payloader 5942, Mill Coulee Payweight 419 plus 107S sons at Stevenson's Diamond Dot at \$47,500. \$21,000 and \$10,000.
- A flush sister to Strike Force is one of the top 3 females ever to walk the Idland Cattle Co. pastures.
- Strike Force has the power, mass and rib to replace his deceased sire, RB Active Duty 010. He is a do-nothing-wrong performance bull with wonderful muscle composition and scrotal development. You will never know how much satisfaction we again when we work with a really practical bull like this because we know he is made for the real world and is stacked with great cows.
- Co-owned by Grant Schillinger, MT, Mill Coulee Farms, WI and Idland Cattle Co., MT.



ICC STRIKE FORCE 8327

Bull • Reg: 19267160 • BD: 03/08/18 • Tat: 8327

ICC MCF Strike Force

R B Active Duty 010
Mill Coulee Barbara K 905 #

LCC New Standard #
B A Lady 6807 305
S A V Final Answer 0035 #
Mill Coulee Barbara K 414



ICC Emblynette 6387

TR Mr Aberdeen 1068Y
ICC Emblynette 2948

TC Aberdeen 759 #
TR Ms Erica 8035U
S A V Pioneer 7301 #
S A V Emblynette 5567

CE: ★

PERF INFO		EPDs						
BW	205 WT	CED	BW	WW	YW	CEM	MILK	
82	722	+2	+4.1	+68	+117	+10	+26	
CW +57	MARB	+4.1	RE +.80	FAT +.011	\$W +58.92	\$B +159.47		

- Extra pounds and performance bred in the pedigree of this bull who combines Strike Force with a high maternal daughter of Aberdeen backed by the SAV Emblynette cow family.



ICC STRIKE FORCE 8273

Bull • Reg: 19267122 • BD: 02/14/18 • Tat: 8273

ICC MCF Strike Force

R B Active Duty 010
Mill Coulee Barbara K 905 #

LCC New Standard #
B A Lady 6807 305
S A V Final Answer 0035 #
Mill Coulee Barbara K 414

ICC Everelda Entense 6382

Mill Coulee Rib Cage
Coleman Everelda Entense9121

Sitz Upward 307R #
Mill Coulee Barbara K 905 #
B C Lookout 7024 #
Coleman Everelda Entense 533

CE: ★

PERF INFO		EPDs						
BW	205 WT	CED	BW	WW	YW	CEM	MILK	
76	835	+4	+3.6	+80	+139	+11	+19	
CW +62	MARB	+0.4	RE +.69	FAT -.007	\$W +63.88	\$B +154.47		

- Phenomenal weaning and yearling EPDs in this Strike Force son who records one of the top four WW EPDs of all the bulls selling in this offering.
- His dam records BW 1@76 and weaned this bull off with a weaning ratio of 112.



ICC STRIKE FORCE 8336

Bull • Reg: 19267156 • BD: 03/12/18 • Tat: 8336

ICC MCF Strike Force

R B Active Duty 010
Mill Coulee Barbara K 905 #

LCC New Standard #
B A Lady 6807 305
S A V Final Answer 0035 #
Mill Coulee Barbara K 414

ICC Basin Lady S532-6358

R B Tour Of Duty 177
Basin Lady S532 AK

Werner War Party 2417 #
B A Lady 6807 305
Vermilion Payweight J847 #
Basin Lady 306E

CE: ★

PERF INFO		EPDs						
BW	205 WT	CED	BW	WW	YW	CEM	MILK	
86	794	+1	+3.9	+84	+136	+7	+23	
CW +61	MARB	+4.1	RE +.73	FAT -.007	\$W +76.33	\$B +167.99		

- One of the top two WW EPD bulls in the sale is this Strike Force son who much like his paternal brother who sells as Lot 65 will move any progressive program forward in terms of weaning and yearling weights.
- He weaned off his two-year old dam by Tour of Duty with a weaning ratio of 107.



ICC STRIKE FORCE 8323

Bull • Reg: 19267164 • BD: 03/06/18 • Tat: 8323

ICC MCF Strike Force

R B Active Duty 010
Mill Coulee Barbara K 905 #

LCC New Standard #
B A Lady 6807 305
S A V Final Answer 0035 #
Mill Coulee Barbara K 414

ICC Rosetta 6362

R B Tour Of Duty 177
ICC Rosetta 2995

Werner War Party 2417 #
B A Lady 6807 305
Hyline Right Time 338 #
H F Rosetta Easy 315E

CE: ★

PERF INFO		EPDs						
BW	205 WT	CED	BW	WW	YW	CEM	MILK	
72	818	-6	+4.3	+84	+149	+7	+19	
CW +72	MARB	+0.8	RE +.55	FAT -.046	\$W +57.59	\$B +157.40		

- The #1 WW EPD, #2 YW EPD, #2 CW EPD, #2 \$F EPD bull in the entire sale is this son of Strike Force who will no doubt sire the kind of progeny that will wean off heavy at weaning time and won't sacrifice yearling performance.



ICC STRIKE FORCE 8326

Bull • Reg: 19267161 • BD: 03/07/18 • Tat: 8326

ICC MCF Strike Force

R B Active Duty 010
Mill Coulee Barbara K 905 #

LCC New Standard #
B A Lady 6807 305
S A V Final Answer 0035 #
Mill Coulee Barbara K 414

ICC Erica 6324

R B Tour Of Duty 177
ICC Erica 8524

Werner War Party 2417 #
B A Lady 6807 305
G A R Grid Maker #
Ner Erica 9355

CE: ★★

PERF INFO		EPDs						
BW	205 WT	CED	BW	WW	YW	CEM	MILK	
78	764	+4	+3.0	+80	+143	+14	+19	
CW +74	MARB	-.24	RE +1.17	FAT -.063	\$W +60.76	\$B +146.12		

- This Strike Force son records the #4 WW EPD, #3 YW EPD, #1 CW EPD, and #1 RE EPD of all the bulls selling and weaned off his dam with a weaning ratio of 103 and earned a low birth ratio of 78.



ICC STRIKE FORCE 8325 (DDC)

Bull • Reg: 19267162 • BD: 03/07/18 • Tat: 8325

ICC MCF Strike Force

R B Active Duty 010

Mill Coulee Barbara K 905 #

LCC New Standard #
B A Lady 6807 305
S A V Final Answer 0035 #
Mill Coulee Barbara K 414

R B Tour Of Duty 177

ICC Barbara K 4156-6307

ICC Barbara K 4156

Werner War Party 2417 #
B A Lady 6807 305
S A V Final Answer 0035 #
Mill Coulee Barbara K 414

CE: ★★★

PERF INFO			EPDs						
BW	205 WT	CED	BW	WW	YW	CEM	MILK		
72	753	+8	+1.4	+61	+107	+15	+30		
CW +43	MARB	+1.5	RE +.54	FAT -.014	\$W +64.13	\$B +117.94			

- This DDC son of Strike Force just produced from a two-year old daughter of Tour of Duty and weaned off with a weaning ratio of 101 and had a low birth ratio of 72.



ICC STRIKE FORCE 8335

Bull • Reg: 19267157 • BD: 03/11/18 • Tat: 8335

ICC MCF Strike Force

R B Active Duty 010

Mill Coulee Barbara K 905 #

LCC New Standard #
B A Lady 6807 305
S A V Final Answer 0035 #
Mill Coulee Barbara K 414

TR Mr Aberdeen 1068Y

ICC Gammer 0720-6366

ICC BonView Gammer 0720

TC Aberdeen 759 #
TR Ms Erica 8035U
G D A R Traveler 044 #
LCC Bon View Gammer LG853

CE: ★★★

PERF INFO			EPDs						
BW	205 WT	CED	BW	WW	YW	CEM	MILK		
52	709	+8	+3	+76	+134	+15	+28		
CW +58	MARB	+3.4	RE +.93	FAT +.007	\$W +78.25	\$B +169.13			

- A blending of explosive growth and performance with bred-in maternal excellence in this mating of Strike Force to a granddaughter of TC Aberdeen 759 who records BW 1@52 and BWR 1@76.



ICC STRIKE FORCE 8317

Bull • Reg: 19267182 • BD: 03/03/18 • Tat: 8317

ICC MCF Strike Force

R B Active Duty 010

Mill Coulee Barbara K 905 #

LCC New Standard #
B A Lady 6807 305
S A V Final Answer 0035 #
Mill Coulee Barbara K 414

TR Mr Aberdeen 1068Y

ICC Everelda Entense 6330

ICC Everelda Entense 8533 #

TC Aberdeen 759 #
TR Ms Erica 8035U
Sitz Alliance 6595 #
ER Everleda Entense K251

CE: ★★

PERF INFO			EPDs						
BW	205 WT	CED	BW	WW	YW	CEM	MILK		
68	708	+4	+2.1	+66	+120	+13	+24		
CW +38	MARB	+7.0	RE +.72	FAT +.003	\$W +59.37	\$B +144.39			

- This three-quarter brother to the calving ease bull who sells as Lot 69 also offers plenty of weaning and yearling performance in his EPD profile.
- His dam records BW 1@68 with BWR 1@96.



ICC STRIKE FORCE 8324

Bull • Reg: 19267163 • BD: 03/06/18 • Tat: 8324

ICC MCF Strike Force

R B Active Duty 010

Mill Coulee Barbara K 905 #

LCC New Standard #
B A Lady 6807 305
S A V Final Answer 0035 #
Mill Coulee Barbara K 414

R B Tour Of Duty 177

ICC Basin Lady S532-6374

Basin Lady S532 AK

Werner War Party 2417 #
B A Lady 6807 305
Vermilion Payweight J847 #
Basin Lady 306E

CE: ★★★

PERF INFO			EPDs						
BW	205 WT	CED	BW	WW	YW	CEM	MILK		
64	707	+7	+3.0	+82	+150	+12	+21		
CW +64	MARB	-.31	RE +.63	FAT -.047	\$W +67.99	\$B +129.63			

- A solid performing son of Strike Force from a dam by Tour of Duty plus he offers the #3 WW EPD and the #1 Yearling weight EPD with the #1 \$F value of all the bulls selling.
- He will provide high performance progeny at weaning time with cattle that will excel into the feedlot.
- Full sib in blood to Lot 66.



ICC RI Ruth 5022-858

Paternal sister to Lots 63-71 and she sells in Denver

Experienced people, quality products,
innovative service and a central location set us apart.

Feed Mill 406-374-2486

Jerry Schlessner - Owner/Nutritional Sales
Consultant
406-868-6604

Steve Morgan - Owner/Nutritional Sales
Consultant
406-794-6627

Tate Switzer - Nutritional Sales Consultant
406-480-3090



MOUNTAIN WEST

AG

LEADERS IN LIVESTOCK NUTRITION

23375 US Highway 191, Garneill, MT 59453

ICC Master Plan



Kate Roberts

Sire of Lots 72-82

CED	BW	WW	YW	RADG	DMI	SC	DOC	CEM	MILK	CW	MARB	RE	FAT	\$W	\$F	\$G	\$B
+4	+2.7	+81	+137	+25	+67	+86	+23	+12	+34	+63	+53	+53	+007	+92.12	+104.92	+33.37	+167.74
70%	80%	1%	3%	25%	85%	45%	20%	15%	5%	4%	45%	40%	45%	1%	4%	50%	10%



zoetis Percent Rank

CED	BW	WW	YW	DMI	YH	SC	DOC	HP	CEM	MK	MW	MH	CW	MB	RE	FAT	TEND
39	34	12	41	89	89	45	56	38	5	2	34	48	16	54	62	44	35



ICC MASTER PLAN

Bull • Reg: +18495017 • BD: 01/29/16 • Tat: 6023

Basin Payweight 006S #
Basin Payweight 1682
 21AR O Lass 7017

Vermilion Payweight J847 #
 Basin Lucy 3829
 HARB Pendleton 765 J H #
 21AR O Lass F24A

EXAR Denver 2002B
RB Lady Denver 167-428
 R B Lady Party 167-305

EXAR Upshot 0562B #
 Exar Royal Lass 1067
 Werner War Party 2417 #
 B A Lady 6807 305

- Powerful, high capacity \$60,000 top selling bull in the 2017 Midland Bull Test Station Sale where his flush brother was the \$37,000 second high selling bull. This is the first time in the 55-year history of Midland that flush brothers have been the top two high selling bulls in the most competitive arena in the world for seedstock performance.
- Six flush mates have generated \$350,000 in progeny sales including the \$200,000 leadoff and high selling heifer in the 2016 National Finals Angus Sale, \$32,000 heifer in Denver and \$11,000 2nd high selling heifer in the 2016 NILE.



ICC Full Circle 6021 - \$37,000 Flush Brother



RB Lady Denver 167-428 - Dam of ICC Master Plan



ICC Lady Payweight 428-6300 \$200,000 Flush Sister



ICC MASTER PLAN 8315



Bull • Reg: 19267138 • BD: 03/02/18 • Tat: 8315

ICC Master Plan

Basin Payweight 1682	Basin Payweight 006S #
	21AR O Lass 7017
RB Lady Denver 167-428	EXAR Denver 2002B
	R B Lady Party 167-305
S A V Final Answer 0035 #	Sitz Traveler 8180 #
	S A V Emulous 8145
ICC Flossie 9656	B C C Bushwacker 41-93 #
	Baldridge Flossie 367

CE: ★★★★★

PERF INFO		EPDs						
BW	205 WT	CED	BW	WW	YW	CEM	MILK	
74	783	+13	-1.3	+63	+110	+14	+35	
CW +48	MARB	+0.33	RE +.60	FAT +.020	\$W +81.58	\$B +137.25		

- Here is a sure shot low birth calving ease bull who records the #3 lowest BW EPD with the #3 \$W value in the entire offering.
- His dam records BW 6@73, BWR 5@94, and WWR 5@101.



ICC MASTER PLAN S532-8321



Bull • Reg: +19267180 • BD: 03/05/18 • Tat: 8321

ICC Master Plan

Basin Payweight 1682	Basin Payweight 006S #
	21AR O Lass 7017
RB Lady Denver 167-428	EXAR Denver 2002B
	R B Lady Party 167-305
Vermilion Payweight J847 #	Vermilion Dateline 7078 #
	Vermilion Lass 7969
Basin Lady S532 AK	Basin Max 806C
Basin Lady 306E	Basin Lady 183C

CE: ★★★

PERF INFO		EPDs						
BW	205 WT	CED	BW	WW	YW	CEM	MILK	
96	746	+5	+1.3	+68	+114	+9	+30	
CW +54	MARB	+0.09	RE +.70	FAT +.021	\$W +75.57	\$B +139.27		

- This Master Plan son is from a young productive daughter of Payweight J847 who records BW 1@76, BWR 1@98, WWR 1@119, and YWR 1@115.
- He is a maternal brother to the popular and proven Basin Excitement as his dam is Basin Lady S532 AK.



**Basin Lady S532 AK -
Dam of Lot 73**



**Basin Excitement - Maternal brother
of Lot 73**



ICC MASTER PLAN 730-8310

Bull • Reg: +19267178 • BD: 03/01/18 • Tat: 8310

ICC Master Plan

Basin Payweight 1682
RB Lady Denver 167-428
Connealy Stimulus 8419 #

Basin Payweight 006S #
21AR O Lass 7017
EXAR Denver 2002B
R B Lady Party 167-305
H A Power Alliance 1025 #
Black Creesa of Conanga 5332
Leachman Right Time #
ALC Forever Lady R02S
ALC Forever Lady K14P

CE: ★★★★★

PERF INFO			EPDs					
BW	205 WT	CED	BW	WW	YW	CEM	MILK	
78	704	+8	-2	+53	+80	+13	+32	
CW +24	MARB	+5.0	RE +.52	FAT +.001	\$W +74.04	\$B +92.53		

- The first of two flush brothers blending the high performance traits of Master Plan with a dam who is a maternal sister to the dam of Musgrave Aviator.
- His dam records BW 4@75, BWR 4@98, WWR 4@102, and YWR 1@107.



Focus Wyaat DeVries
Lot 74 - ICC Master Plan 730-8310



ICC RI MASTER PLAN 730-890

Bull • Reg: +19267179 • BD: 02/26/18 • Tat: 890

ICC Master Plan

Basin Payweight 1682
RB Lady Denver 167-428
Connealy Stimulus 8419 #

Basin Payweight 006S #
21AR O Lass 7017
EXAR Denver 2002B
R B Lady Party 167-305
H A Power Alliance 1025 #
Black Creesa of Conanga 5332
Leachman Right Time #
ALC Forever Lady R02S
ALC Forever Lady K14P

CE: ★★★

PERF INFO			EPDs					
BW	205 WT	CED	BW	WW	YW	CEM	MILK	
78	765	+5	+2.1	+68	+110	+7	+27	
CW +42	MARB	+7.9	RE +.55	FAT +.018	\$W +75.21	\$B +140.84		

- This flush brother to Lot 74 is from a dam recording BW 4@75, BWR 4@98, WWR 4@102, and YWR 1@107.
- He is backed by the same great cow family that produced the popular and proven ICC herd sire, Musgrave Aviator.



ICC MASTER PLAN 8320

Bull • Reg: 19267140 • BD: 03/05/18 • Tat: 8320

ICC Master Plan

Basin Payweight 1682
RB Lady Denver 167-428
Hoover Home Run
ICC Miss Wix 2950

Basin Payweight 006S #
21AR O Lass 7017
EXAR Denver 2002B
R B Lady Party 167-305
SydGen C C & 7 #
Erica of Ellston X16
Sitz Alliance 6595 #
Miss Wix 415 of Mc Cumber

CE: ★★

PERF INFO			EPDs					
BW	205 WT	CED	BW	WW	YW	CEM	MILK	
84	737	+5	+2.8	+62	+105	+9	+32	
CW +47	MARB	+4.0	RE +.48	FAT -.004	\$W +72.60	\$B +140.96		

- This son of Master Plan performed well at weaning time and is backed by a high maternal daughter of Hoover Home Run who records BW 4@76, BWR 3@99, and WWR 3@103.



ICC MASTER PLAN W857-8343

Bull • Reg: +19267181 • BD: 03/14/18 • Tat: 8343

ICC Master Plan

Basin Payweight 1682
RB Lady Denver 167-428
TC Franklin 619 #
Brusett Forever W857

Basin Payweight 006S #
21AR O Lass 7017
EXAR Denver 2002B
R B Lady Party 167-305
TC Total 410 #
TC Marcia 1069 #
Sitz Traveler 8180 #
Brusett Ext 221

CE: ★★★

PERF INFO			EPDs					
BW	205 WT	CED	BW	WW	YW	CEM	MILK	
80	744	+7	+1.2	+73	+123	+14	+31	
CW +54	MARB	+3.3	RE +.46	FAT -.011	\$W +81.45	\$B +134.70		

- A unique opportunity to select a herd sire who will be a maternal brother to the rare curve-bending AI sire JVC Calvary V3326 in this bull whose dam records WWR 1@107.
- He records the #4 \$W value of the entire offering and offers a unique pedigree with proven genetics.



ICC MASTER PLAN 8304

Bull • Reg: 19267136 • BD: 02/26/18 • Tat: 8304

ICC Master Plan

Basin Payweight 1682
RB Lady Denver 167-428
Diamond in the Rough
Diamond Trojan Erica 64A8
OP35

Basin Payweight 006S #
21AR O Lass 7017
EXAR Denver 2002B
R B Lady Party 167-305
Diamond Justice 901S #
Diamond Black Lady 7206 #
Diamond Futuredirection
Diamond Trojan Erica 423S
Diamond Trojan Erica 4236

CE: ★★

PERF INFO			EPDs					
BW	205 WT	CED	BW	WW	YW	CEM	MILK	
84	704	+5	+2.6	+65	+114	+15	+29	
CW +50	MARB	+3.9	RE +.47	FAT +.015	\$W +65.44	\$B +141.82		

- A blending of calving ease with bred-in maternal excellence in this Master Plan son from a high maternal daughter of Diamond In the Rough who records BW 4@82, WWR 4@107, and YWR 2@104



ICC MASTER PLAN 8274

Bull • Reg: 19267123 • BD: 02/14/18 • Tat: 8274

ICC Master Plan

Basin Payweight 1682
RB Lady Denver 167-428
R B Tour Of Duty 177
ICC Barbara K 4124-6305
ICC Barbara K 4124

Basin Payweight 006S #
21AR O Lass 7017
EXAR Denver 2002B
R B Lady Party 167-305
Werner War Party 2417 #
B A Lady 6807 305
S A V Final Answer 0035 #
Mill Coulee Barbara K 414

CE: ★

PERF INFO		EPDs						
BW	205 WT	CED	BW	WW	YW	CEM	MILK	
84	806	-6	+4.7	+69	+114	+5	+32	
CW +50	MARB	+41	RE +.94	FAT -.035	\$W +66.69	\$B +151.90		

- Outstanding weaning performance in this Master Plan son who posted a weaning ratio of 108 from a two-year old daughter of Tour of Duty backed by the great Barbara cow family.



ICC MASTER PLAN 8329

Bull • Reg: 19267143 • BD: 03/09/18 • Tat: 8329

ICC Master Plan

Basin Payweight 1682
RB Lady Denver 167-428
S Summit 956 #
ICC Miss Wix 4618

Basin Payweight 006S #
21AR O Lass 7017
EXAR Denver 2002B
R B Lady Party 167-305
GDAR Game Day 449 #
S Pride Anna 709 #
Sitz Alliance 6595 #
Miss Wix 415 of Mc Cumber

CE: ★★★★★

PERF INFO		EPDs						
BW	205 WT	CED	BW	WW	YW	CEM	MILK	
72	736	+7	-.1	+66	+110	+9	+41	
CW +50	MARB	+28	RE +.22	FAT +.046	\$W +86.45	\$B +118.22		

- If you are serious about increasing weaning weights and maintaining replacement females, here is the #1 \$W bull in the entire offering.
- He is produced from a two-year old daughter of S Summit 956 and posted a low birth ratio of 96 with a weaning ratio of 101.



ICC MASTER PLAN 8280

Bull • Reg: 19267127 • BD: 02/19/18 • Tat: 8280

ICC Master Plan

Basin Payweight 1682
RB Lady Denver 167-428
S A V Final Answer 0035 #
M A R Blackbird 8067 #

Basin Payweight 006S #
21AR O Lass 7017
EXAR Denver 2002B
R B Lady Party 167-305
Sitz Traveler 8180 #
S A V Emulous 8145
Sitz Traveler 8180 #
Jolly R Blackbird 184A

CE: ★★★★★

PERF INFO		EPDs						
BW	205 WT	CED	BW	WW	YW	CEM	MILK	
84	680	+10	+5	+64	+112	+9	+32	
CW +39	MARB	+55	RE +.28	FAT +.038	\$W +77.87	\$B +119.16		

- This three-quarter brother to Lot 82 offers double-digit calving ease with plenty of weaning and yearling growth and is from a dam recording BW 6@77.
- He is backed by the same cow family that produced ICC Pay Raise 4886.



ICC MASTER PLAN 8312

Bull • Reg: 19267137 • BD: 03/01/18 • Tat: 8312

ICC Master Plan

Basin Payweight 1682
RB Lady Denver 167-428
S A V Final Answer 0035 #
Mill Coulee Barbara K 414

Basin Payweight 006S #
21AR O Lass 7017
EXAR Denver 2002B
R B Lady Party 167-305
Sitz Traveler 8180 #
S A V Emulous 8145
Mill Coulee Legacy 211
Mill Coulee Barbara K 122

CE: ★★★

PERF INFO		EPDs						
BW	205 WT	CED	BW	WW	YW	CEM	MILK	
76	695	+7	+1.1	+64	+106	+12	+35	
CW +43	MARB	+46	RE +.70	FAT +.002	\$W +76.42	\$B +144.68		

- This three-quarter brother to Lot 81 is backed by one of the most influential cow families in the ICC program and from a dam recording BW 4@75, WWR 2@100, and YWR 1@104.



ICC FULL CIRCLE 8296

Bull • Reg: 19267131 • BD: 02/24/18 • Tat: 8296

ICC Full Circle 6021

Basin Payweight 1682
RB Lady Denver 167-428
S Chisum 6175 #
NER Everelda Entense 2453

Basin Payweight 006S #
21AR O Lass 7017
EXAR Denver 2002B
R B Lady Party 167-305
S Alliance 3313
S Gloria 464 #
Leachman Right Time #
Shadybrook Ever Entense 165H

CE: ★★

PERF INFO		EPDs						
BW	205 WT	CED	BW	WW	YW	CEM	MILK	
75	699	+2	+2.5	+62	+100	+11	+33	
CW +50	MARB	+04	RE +.46	FAT +.005	\$W +73.77	\$B +137.63		

- A tremendous amount of mass and volume in this high performance son of Full Circle from a dam recording BW 4@72, BWR 4@97, and WWR 4@102.
- His sire was the second top selling bull at the Midland bull test and is the ABS AI stud.



ICC FULL CIRCLE 8302

Bull • Reg: 19267134 • BD: 02/26/18 • Tat: 8302



ICC Full Circle 6021

Basin Payweight 1682

Basin Payweight 006S #
21AR O Lass 7017

RB Lady Denver 167-428

EXAR Denver 2002B
R B Lady Party 167-305

SydGen C C & 7 #

S A F Connection #
SydGen Forever Lady 4087

Erica of Ellston X16

S A Neutron 377 #
Shottish V047



ICC Erica 4126

CE: ★★

PERF INFO		EPDs						
BW	205 WT	CED	BW	WW	YW	CEM	MILK	
80	702	+2	+2.8	+72	+115	+9	+29	
CW +49	MARB	+73	RE +47	FAT +.003	\$W +74.09	\$B +153.35		

- This son of the second top selling bull at the Midland Bull Test, ICC Full Circle 6021 is backed by a dam recording BW 2@77



Lot 85 - ICC Riley 8350



ICC RILEY 8350

Bull • Reg: 19267147 • BD: 03/21/18 • Tat: 8350



RB Riley 890-2181

G A R Objective 7125 #

S S Objective T510 OT26 #
G A R 1407 New Design 1463

R B Lady Standard 305-890

LCC New Standard #
B A Lady 6807 305

Hoover Dam #

SydGen C C & 7 #
Erica of Ellston C124 #

ICC Everelda Entense 2945

ICC Everelda Entense 8533 #

Sitz Alliance 6595 #
ER Everelda Entense K251

CE: ★★★

PERF INFO		EPDs						
BW	205 WT	CED	BW	WW	YW	CEM	MILK	
84	782	+9	+1.1	+63	+111	+15	+30	
CW +49	MARB	+77	RE +67	FAT +.012	\$W +66.03	\$B +160.57		

- The sire of this bull is a flush brother to several high income producing donors in prominent programs throughout the country.
- His dam by Hoover Dam records BW 4@80 with WWR 4@103.



ICC GW RILEY 846

Bull • Reg: 19267166 • BD: 03/20/18 • Tat: 846



RB Riley 890-2181

G A R Objective 7125 #

S S Objective T510 OT26 #
G A R 1407 New Design 1463

R B Lady Standard 305-890

LCC New Standard #
B A Lady 6807 305

O C C Missing Link 830M #

O C C Headliner 661H
O C C Dixie Erica 946K

JVC Blackcap X019

Callaways Blackcap 0653

Leachman Right Time #
G A R Scotch Cap 867 #

CE: ★★★

PERF INFO		EPDs						
BW	205 WT	CED	BW	WW	YW	CEM	MILK	
84	715	+9	+6	+39	+69	+5	+33	
CW +21	MARB	+54	RE +49	FAT -.010	\$W +43.89	\$B +93.54		

- A unique pedigree in this low birth calving ease son of RB Riley 890-2181 backed by a dam by Missing Link who records BW 6@81 with WWR 5@101.



ICC Full Circle 6021

Sire of Lots 83-84

EPDs						
CED	BW	WW	YW	SC	CEM	MILK
+7	+1.6	+76	+127	+94	+12	+34
CW +55	MARB +73	RE +23	FAT +.032	\$W +88.79	\$B +162.30	



RB Riley 890-2181

ORigen
Sire of Lots 85-86

EPDs						
CED	BW	WW	YW	SC	CEM	MILK
+0	+4.2	+76	+127	+30	+8	+39
CW +54	MARB +8	RE +80	FAT -.005	\$W +77.03	\$B +171.57	



ICC RI ACTIVE DUTY 891

Bull • Reg: +19298809 • BD: 02/27/18 • Tat: 891

Bon View New Design 1407

LCC New Standard #

LCC Sunset K3118

B A Lady 6807 305

Vermilion Dateline 7078 #

G D Lady Hi Flyer 302

S A V Final Answer 0035 #

Sitz Traveler 8180 #

S A V Emulous 8145

S A V Abigale 6870

BR Midland #

S A V Abigale 6062

CE: ★★

PERF INFO		EPDs						
BW	205 WT	CED	BW	WW	YW	CEM	MILK	
84	665	+0	+3.1	+79	+141	+4	+19	
CW +54	MARB	+28	RE +37	FAT +.020	\$W +66.06	\$B +144.32		

- Here is a big time, high growth son of RB Active Duty 010 who has a brother working in the Masser Ranch program.
- Recording the 4th highest yearling weight EPD in the entire offering, expect his progeny to excel at both weaning and yearling time and with the added high maternal traits of the SAV Abigale cow family. His daughters should make top replacements.



ICC RI DYNASTY 895

Bull • Reg: 19267165 • BD: 03/24/18 • Tat: 895

GDAR Game Day 449 #

Sitz Dynasty 264Z

Sitz Pride 88T #

Summitcrest Complete 1P55 #

HW Complete of 6108 1548

DRMCTR 111 Rita 6108

C R A Bextor 872 5205 608 #

B A R Ext Traveler 205 #

Cra Lady Jaye 608 498 S Easy

B/R New Dimension 7127 #

Riverbend New Dimension R511

Three Trees Entense 567G

CE: ★★★★★

PERF INFO		EPDs						
BW	205 WT	CED	BW	WW	YW	CEM	MILK	
66	677	+11	-9	+31	+64	+13	+40	
CW +31	MARB	+75	RE +1.14	FAT +.027	\$W +49.81	\$B +122.23		

- Here is the #2 RE EPD bull in the entire offering. He offers an outcross pedigree with proven calving ease genetics.
- His dam records BW 4@75, BWR 93@5, WWR 5@104, YWR 2@101.



ICC WEIGH UP 0739-8289

Bull • Reg: +19297140 • BD: 02/21/18 • Tat: 8289

Connealy Onward #

Sitz Upward 307R #

Sitz Henrietta Pride 81M

Plattemere Weigh Up K360

G A R Retail Product #

Barbara of Plattemere 337 #

Barbara of Plattemere 311

Hoover Dam #

SydGen C C & 7 #

Erica of Ellston C124 #

ICC Blackbird 0739

M A R Blackbird 8067 #

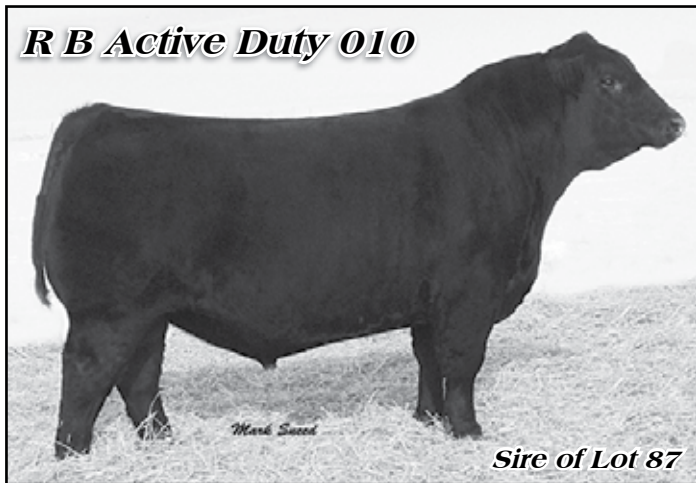
Sitz Traveler 8180 #

Jolly R Blackbird 184A

CE: ★★★★★

PERF INFO		EPDs						
BW	205 WT	CED	BW	WW	YW	CEM	MILK	
74	706	+8	+1.6	+69	+124	+10	+28	
CW +58	MARB	+82	RE +.35	FAT -.001	\$W +69.25	\$B +166.22		

- A direct son of the rare curve-bending AI sire Weigh Up backed by a dam recording BW 5@70, BWR 9@96, WWR 4@102, YWR 2@105.
- His dam is also the dam of ICC Pay Raise 4886.



EPDS	CED	BW	WW	YW	CEM	MILK	CW	MB	RE	FAT	\$W	\$B
+8	+1.8	+65	+117	+11	+20	+46	+17	+51	+0.16	+56.73	+127.90	



ICC MR ABERDEEN 8328

Bull • Reg: 19267142 • BD: 03/08/18 • Tat: 8328

TC Aberdeen 759 #

C R A Bextor 872 5205 608 #

TR Mr Aberdeen 1068Y

TC Blackbird 4034 #

TR Ms Erica 8035U

S S Objective T510 0T26 #

TR Ms Erica 5052R

Sitz Upward 307R #

Connealy Onward #

ICC Countess 4133

JVC Countess 906 V977

Sitz Henrietta Pride 81M

S A F Focus of E R #

Mytty Countess 906

CE: ★★★★★

PERF INFO		EPDs						
BW	205 WT	CED	BW	WW	YW	CEM	MILK	
78	766	+11	-9	+65	+118	+12	+37	
CW +51	MARB	+21	RE +.75	FAT -.009	\$W +76.77	\$B +129.75		

- A grandson of the proven Pathfinder sire TC Aberdeen 759 produced from a high growth daughter of Sitz Upward 307R backed by the same cow family that produced Mytty In Focus.
- His dam records BW 2@71, BWR 2@97, and WWR 2@104.



EPDS	CED	BW	WW	YW	CEM	MILK	CW	MB	RE	FAT	\$W	\$B
+8	+0	+56	+103	+10	+27	+37	+66	+97	+0.10	+55.51	+133.13	



JVC Discovery C05

Sire of Lots 91-92

EPDS	CED	BW	WW	YW	CEM	MILK	CW	MB	RE	FAT	\$W	\$B
+10	-.5	+78	+143	+12	+29	+64	+1.14	+55	-.029	+82.46	+184.31	



93

ICC RI SURE FIRE 894

Bull • Reg: 19091791 • BD: 03/09/18 • Tat: 894

G A R Sure Fire

Connealy In Sure 8524 #

Chair Rock 5050 G A R 8086

A A R Ten X 7008 S A #

Woodland Blackbird 35

Woodland Blackbird 719

Mytty In Focus #

Entreana of Conanga 657

G A R New Design 5050 #

Chair Rock Grid Maker 2107

Mytty In Focus #

A A R Lady Kelton 5551 #

B/R Destination 727-928 #

Woodland Blackbird 305

CE: ★★★★★

PERF INFO		EPDs						
BW	205 WT	CED	BW	WW	YW	CEM	MILK	
70	661	+15	-1.3	+56	+100	+15	+19	
CW +37	MARB	+1.10	RE +.58	FAT +.007	\$W +54.55	\$B +135.48		

- The #1 calving ease direct bull in the sale with the 3rd lowest BW EPD and the #1 marbling EPD is this son of GAR Sure Fire produced from a dam by Ten X who excels for calving ease recording BW 4@63 with BWR 4@87.

~ SIMM/ANGUS HALF BLOOD ~



Lot 94 - Simm/Angus Half Blood



91

ICC DISCOVERY C05-8346

Bull • Reg: 19267154 • BD: 03/15/18 • Tat: 8346

JVC Discovery C05

V A R Discovery 2240

Goode 5050 New Design 0304

R B Active Duty 010

Coleman Donna 1103

A A R Ten X 7008 S A #

Deer Valley Rita 0308

G A R New Design 5050 #

Goode Objective 8404

LCC New Standard #

B A Lady 6807 305

Basin Rainmaker 654X #

KMK Donna J311

CE: ★★★★★

PERF INFO		EPDs						
BW	205 WT	CED	BW	WW	YW	CEM	MILK	
74	787	+7	-.1	+68	+130	+8	+28	
CW +55	MARB	+4.4	RE +.46	FAT -.002	\$W +69.94	\$B +165.62		

- This Discovery grandson is produced from a high growth Active Duty dam backed by the high maternal Donna cow family.
- His dam records BW 2@77, WWR 2@105, and YWR 1@107.



92

ICC DISCOVERY C05-8354

Bull • Reg: 19267151 • BD: 03/30/18 • Tat: 8354

JVC Discovery C05

V A R Discovery 2240

Goode 5050 New Design 0304

Hoover Dam #

Erica of Ellston X16

A A R Ten X 7008 S A #

Deer Valley Rita 0308

G A R New Design 5050 #

Goode Objective 8404

SydGen C C & 7 #

Erica of Ellston C124 #

S A Neutron 377 #

Shottish V047

CE: ★★★

PERF INFO		EPDs						
BW	205 WT	CED	BW	WW	YW	CEM	MILK	
84	696	+4	+1.0	+63	+116	+10	+30	
CW +50	MARB	+1.04	RE +.53	FAT +.017	\$W +67.71	\$B +161.13		

- The #2 marbling EPD bull in the sale is this grandson of VAR Discovery produced from a low birth daughter of Hoover Dam who records BW 2@72 with BWR 2@97.



94

SIMM/ANGUS HALF BLOOD

Bull • Reg: Commercial • BD: 03/03/18 • Tat: 8390

SVF Allegiance Y802

MR NLC Upgrade U8676

Double R Miss 29G T18

ICC Dam 7480 (Angus)

Ellingson Legacy M229

Ms NLC Mojo S6119 B

Circlet Antoinettes Star

SAC Miss Jet Top 29G

CE: ★★

PERF INFO		SIRE EPDs						
BW	Act WW	CE	BW	WW	YW	MCE	MM	
80	690	12.9	2.3	93.6	138.7	7.7	16.7	
CW 44.2	MARB	0.12	RE 0.95	FAT -0.113	API 125.8	TI 85.6		

- BWF.



SALE BROADCAST LIVE

Bid online: www.frontierlivesale.com

IDLAND
CCATTLE COMPANY R&C

**ICC
VOLUME BUYER
INCENTIVE**

- 2% OFF TOTAL PURCHASE OF 4-5 BULLS
- 3% OFF TOTAL PURCHASE OF 6-7 BULLS
- 4% OFF TOTAL PURCHASE OF 8-9 BULLS
- 5% OFF TOTAL PURCHASE OF 10 OR MORE BULLS

IDLAND
CCATTLE COMPANY R&C

406-485-2292

**YOUR REPLACEMENT
HEADQUARTERS**

Your chance to improve your genetic potential with a great set of replacement heifers sired by Idland bulls.

Heifer Calves

- Group A 5 hd Commercial Heifer Calves**
- Group B 5 hd Commercial Heifer Calves**
- Group C 5 hd Commercial Heifer Calves**

MUSGRAVE AVIATOR 17264774

Cowmans favorite



Sire: Koupals B&B Identity
MGS: S A V Final Answer 0035

Setting the industry standard for calving ease, muscle and phenotype.

- Sleep all night heifer bull.
- Cowman's favorite...medium framed, full bodied and really thick.
- Homozygous TT for the Leptin gene that improves feed efficiency, appetite, marbling and maternal strength.
- High accuracy EPDs, great feet and docile disposition.

Special:

Regular Price: \$24 **20 Units or More... \$15**



GED	BW	WW	YW	RADG	SC	DOC	CEM	MILK	CW	MARB	RE	FAT	SW	SF	SG	SB
+10	-1.8	+51	+93	+33	+1.22	+12	+16	+27	+34	+49	+63	+0.41	+59.61	+72.64	+33.93	+137.21

**FIRST BREEDING SEASON GUARANTEE
AVAILABLE SALE DAY**

**Contact Sale Clerk's Desk
Sale Day For Specifics**



DATA ON ALL REGISTERED ANGUS BULLS



Lot #	Genomic	CED%	BW%	WW%	YW%	DMI%	YH%	SC%	DOC%	HP%	CEM%	MILK%	MW%	MH%	CW%	MARB%	RE%	FAT%	TEND%
1	i50K	85	88	22	38	30	17	14	62	25	45	65	24	13	26	84	51	60	76
2	HD50K	44	75	24	19	59	27	24	4	62	35	6	26	19	16	80	34	63	52
4	HD50K	21	12	9	17	20	36	34	44	14	3	2	26	37	12	85	56	80	37
5	HD50K	33	33	26	10	4	61	3	29	39	12	29	96	90	28	70	11	21	76
6	HD50K	12	6	42	35	14	21	19	84	33	1	24	47	14	42	90	37	36	46
7	HD50K	57	40	63	64	5	76	13	56	17	6	80	86	68	93	55	87	77	56
8	HD50K	39	54	5	11	8	39	31	18	31	17	83	39	67	25	74	19	83	41
9	HD50K	33	29	29	25	22	27	40	28	57	3	32	25	38	63	80	53	80	10
10	HD50K	16	9	75	22	10	31	40	56	32	4	33	20	24	79	53	40	65	28
11	HD50K	42	41	6	13	51	31	6	68	1	35	10	49	15	26	51	10	50	15
12	HD50K	54	82	2	6	46	13	16	73	59	7	75	39	61	4	67	47	54	30
13	HD50K	28	23	51	36	22	13	59	64	48	12	79	96	62	22	62	96	94	61
14	i50K	14	19	10	27	8	80	30	12	29	27	53	64	62	17	42	37	67	81
15	HD50K	16	11	10	37	2	53	31	60	29	28	88	72	86	57	32	52	72	61
16	i50K	7	23	8	4	27	28	33	19	52	5	96	42	60	4	46	39	66	58
17	HD50K	12	34	37	11	54	35	19	66	21	16	61	14	41	29	39	54	79	86
18	HD50K	2	5	9	10	40	21	20	65	30	41	82	22	46	23	75	46	77	60
19	HD50K	71	54	5	12	38	10	36	77	36	82	73	28	3	5	42	60	69	62
20	HD50K	32	45	14	24	85	82	26	87	38	4	16	62	31	3	87	84	98	60
21	HD50K	51	55	25	27	76	35	18	81	75	21	70	42	29	24	78	36	41	75
22	HD50K	6	7	7	8	32	24	44	54	82	47	90	11	9	4	31	23	86	23
23	HD50K	36	36	34	47	34	7	4	35	2	35	14	77	54	27	29	64	90	64
24	HD50K	3	32	19	10	16	9	7	73	22	9	87	21	22	23	42	25	90	37
25	HD50K	7	18	19	11	26	50	18	7	26	88	16	75	60	14	32	33	90	85
26	HD50K	12	26	1	6	61	50	26	8	8	26	94	17	21	1	66	56	57	83
27	HD50K	1	5	1	3	30	14	72	44	42	5	31	12	13	2	80	60	71	91
28	HD50K	2	3	23	19	51	32	50	7	11	8	47	32	33	20	35	24	74	56
29	HD50K	21	53	7	6	67	52	5	20	12	52	92	32	20	10	35	52	79	67
30	HD50K	46	17	1	3	68	25	52	87	27	41	73	48	19	4	33	65	71	44
31	HD50K	33	36	23	5	51	34	28	39	22	27	61	12	12	30	69	53	41	58
32	HD50K	17	24	1	2	76	89	6	3	25	28	75	55	32	1	57	18	65	67
33	HD50K	10	6	16	3	6	16	20	18	17	3	29	56	35	3	34	46	79	32
34	HD50K	2	1	21	22	71	60	34	18	28	86	37	76	72	25	12	95	100	96
35	HD50K	31	58	32	27	5	17	7	70	22	7	32	3	7	35	82	9	56	94
36	i50K	96	98	9	24	55	10	62	22	59	42	49	3	8	19	84	74	57	32
37	HD50K	34	32	50	29	28	42	21	22	60	5	89	30	66	73	62	63	21	40
38	HD50K	41	44	23	14	32	37	53	72	54	7	85	23	64	63	87	66	30	54
39	HD50K	49	54	16	12	65	6	8	48	49	19	80	20	50	33	95	65	17	46
40	HD50K	69	93	33	41	72	5	19	56	30	28	39	1	2	43	95	61	35	6
41	HD50K	86	94	4	4	76	8	45	6	21	20	88	6	23	18	49	50	70	2
42	HD50K	41	65	14	10	78	51	32	42	7	78	76	27	60	21	96	45	87	43
43	HD50K	39	36	53	49	51	23	1	52	37	2	71	52	43	42	88	67	97	13
44	HD50K	49	36	12	40	42	72	87	5	61	82	43	60	61	32	57	55	61	33
45	HD50K	41	23	33	12	5	20	44	37	69	6	35	16	36	15	66	9	46	86
46	HD50K	79	30	53	32	6	61	5	58	38	68	89	74	50	37	74	33	34	47
47	HD50K	21	21	77	84	2	91	31	95	55	62	56	71	62	92	77	78	93	74



DATA ON ALL REGISTERED ANGUS BULLS



Lot #	Genomic	CED%	BW%	WW%	YW%	DMI%	YH%	SC%	DOC%	HP%	CEM%	MILK%	MW%	MH%	CW%	MARB%	RE%	FAT%	TEND%
48	HD50K	25	13	54	50	21	56	7	9	36	38	10	62	72	36	66	24	74	61
49	HD50K	84	95	10	10	71	3	2	32	35	27	12	1	1	21	62	73	72	87
50	HD50K	Available Sale Day																	
51	HD50K	59	42	28	59	3	73	20	57	72	58	37	83	88	58	83	66	48	47
52	HD50K	65	72	52	77	35	5	11	98	38	1	57	9	5	49	89	5	17	67
53	HD50K	33	32	36	63	1	55	13	37	39	2	70	30	34	53	80	37	56	6
54	HD50K	36	52	12	15	8	2	2	32	66	24	7	26	13	18	98	79	54	26
55	HD50K	67	77	27	47	47	7	4	41	44	9	21	9	28	37	84	75	88	85
56	HD50K	96	83	41	45	29	39	12	25	33	13	78	34	39	38	86	49	27	35
57	HD50K	47	68	50	64	11	74	14	55	38	10	43	6	11	55	56	19	83	79
58	HD50K	14	27	9	37	30	30	2	36	49	76	86	51	55	24	31	12	21	72
59	HD50K	18	15	60	54	61	13	4	20	77	20	16	7	7	35	72	23	16	54
60	HD50K	46	9	80	77	46	52	66	9	26	9	13	89	93	76	51	56	86	32
61	HD50K	52	34	63	69	18	3	38	1	32	7	37	17	15	39	68	75	93	5
62	HD50K	19	27	65	76	67	44	10	20	96	24	4	52	32	44	84	95	71	66
63	HD50K	81	96	49	46	47	97	42	80	78	4	52	47	66	26	49	21	48	20
64	HD50K	45	64	4	17	19	24	46	8	36	66	66	24	40	13	90	28	16	71
65	HD50K	92	92	15	3	87	7	77	33	39	48	52	1	2	21	89	52	2	41
66	HD50K	73	74	7	28	86	67	39	3	12	29	55	61	73	22	65	35	57	63
67	HD50K	49	73	9	2	86	16	4	34	24	26	57	6	15	10	92	3	1	88
68	HD50K	12	11	57	66	66	71	61	64	11	12	3	75	46	82	90	66	22	51
69	HD50K	59	75	8	1	60	82	18	50	38	9	43	25	52	9	65	5	14	92
70	HD50K	81	75	66	16	34	69	11	39	4	36	67	25	38	80	26	40	27	85
71	HD50K	62	80	1	1	94	38	9	46	3	69	42	11	24	5	90	31	7	34
72	HD50K	5	1	68	61	72	67	38	51	12	18	5	76	79	45	73	46	48	71
73	HD50K	54	20	29	38	71	80	41	43	61	43	4	32	52	35	93	31	53	31
74	HD50K	51	49	57	89	75	85	69	56	35	24	2	64	38	49	35	66	58	43
75	HD50K	72	74	23	71	63	52	40	62	69	18	25	39	69	46	14	57	57	48
76	HD50K	39	25	14	54	88	61	89	65	21	19	21	14	41	58	54	82	26	17
77	HD50K	43	73	42	50	56	93	14	5	22	25	27	63	44	31	80	58	18	74
78	HD50K	40	66	9	36	81	39	19	82	53	1	22	50	44	12	86	61	69	93
79	HD50K	82	81	54	83	38	83	54	66	21	23	13	69	80	72	79	13	27	96
80	HD50K	29	7	33	58	80	61	74	21	14	25	1	81	79	20	94	88	87	62
81	HD50K	4	6	38	58	88	97	36	11	45	33	4	52	71	62	61	90	78	45
82	HD50K	34	51	29	50	18	48	25	56	66	12	6	32	54	36	75	26	17	20
83	HD50K	97	95	16	56	23	97	12	42	46	24	31	82	66	15	87	48	53	60
84	HD50K	87	85	18	30	26	69	12	4	5	22	31	37	48	22	29	36	30	85
85	HD50K	43	46	19	50	36	50	54	14	25	38	40	34	42	41	36	17	35	84
86	HD50K	38	36	42	81	14	25	86	37	99	92	5	71	47	78	46	59	28	41
87	HD50K	84	78	11	7	81	23	4	38	32	85	85	7	38	25	59	89	77	74
88	HD50K	12	18	88	71	38	95	48	68	35	68	3	98	95	76	27	5	79	51
89	HD50K	63	74	7	8	53	38	43	21	4	41	56	15	32	7	41	73	51	83
90	HD50K	10	3	34	29	94	33	16	81	41	33	33	71	51	26	72	59	55	86
91	HD50K	66	64	13	3	15	23	57	16	48	32	77	11	13	9	59	46	11	41
92	HD50K	41	30	11	2	72	51	32	27	12	60	29	21	37	10	22	25	34	9
93	HD50K	1	4	67	28	77	69	29	5	22	3	80	51	38	56	12	33	20	58

IDLAND CCATTLE COMPANY R^{CC}

PO Box 329
Circle, Montana 59215



We'll See You At The Sale!

Selling:

- 93 YEARLING ANGUS BULLS**
- 1 SIMM/ANGUS BULL**
- 15 COMMERCIAL HEIFER CALVES**

50% Offering Are Heifer Bulls
Raised With No Creep Feed



Genomic Tested • Calving Ease • Performance



Maternal Strengths • Proven Pedigrees

Volume Discounts • Guarantees

Buy Back Program

IDLAND CCATTLE COMPANY R^{CC}

406-974-2293 (Cell)
www.idlandcattleco.com



Sale Managed By
RANCE LONG, INC
918.510.3464 cell
rlong@rancelong.com
www.rancelong.com



Sale Broadcast Live:
frontierlivesale.com
Scott Fraser - 406-860-6548

Everyone Deserves a Pay Raise

ICC Pay-Raise-4886



**8 Sons
Sell**

catalog online at www.idlandcattleco.com